

<epam> | splunk>

How to Build a Solution from Scratch: A Case Study of Partner Engagement and Co-development

Vladimir Melnik,
Senior Director, Strategy, Office of the CTO, Splunk

Igal Vainer,
Senior Director, Head of Software and High-tech Practice,
EPAM Systems



Disclaimer

During the course of this presentation, we may make forward looking statements regarding future events or the expected performance of the company. We caution you that such statements reflect our current expectations and estimates based on factors currently known to us and that actual events or results could differ materially. For important factors that may cause actual results to differ from those contained in our forward-looking statements, please review our filings with the SEC. The forward-looking statements made in the this presentation are being made as of the time and date of its live presentation. If reviewed after its live presentation, this presentation may not contain current or accurate information. We do not assume any obligation to update any forward looking statements we may make. In addition, any information about our roadmap outlines our general product direction and is subject to change at any time without notice. It is for informational purposes only and shall not, be incorporated into any contract or other commitment. Splunk undertakes no obligation either to develop the features or functionality described or to include any such feature or functionality in a future release.

Splunk DevIgnite Program

Accelerate your development of innovative solutions on the Splunk platform!



Email: DevIgnite@splunk.com

Benefits to Splunk DevIgnite Partners

- 1 Accelerated development following best practices
- 2 Faster time to market (and revenue) given Splunk's involvement and GTM support
- 3 Unique and deeply integrated offerings that help drive customer success

EPAM AND SPLUNK PARTNER TO DELIVER

<epam> | splunk>

- Rapid development based on Splunk technology
- EPAM Healthcare industry domain knowledge
- Innovation at the heart of EPAM approach
- EPAM partnership adds value to Splunk products

WHO IS EPAM SYSTEMS?

FOUNDED IN
1993

US HEADQUARTERED
PUBLIC COMPANY
(NYSE:EPAM)

Q1 2016
Revenue
\$264.5M

2016 Revenue
Guidance
\$1.15B



17,000+
Engineers, designers and
consultants

**CONSTANT
GROWTH**

21
Reported Consecutive
Quarters

20+%
YOY organic growth

4
Continents

25
Countries



REVENUE BY GEOGRAPHY

| | |
|---------------|-----|
| North America | 58% |
| Europe | 36% |
| APAC | 2% |
| CIS | 4% |

INDUSTRY FOCUS

27%



Financial Services

24%



Travel & Consumer

21%



Software & Hi-tech

6%



Emerging

14%



Media &
Entertainment

8%



Life sciences &
Healthcare

SERVICE MIX

Software Engineering &
Product/Platform Development

QA and Test Automation

Managed Services

Infrastructure & Licensing

EPAM SAMPLE CUSTOMERS IN HC

KEY FACTS



7%

of EPAM
business



9/10

of the top
Pharma
companies



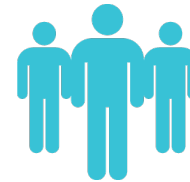
4/10

of the top
Healthcare
ISVs



3/5

of the top US
Health Plans



1300

Consultants,
Engineers &
scientists

HEALTHCARE

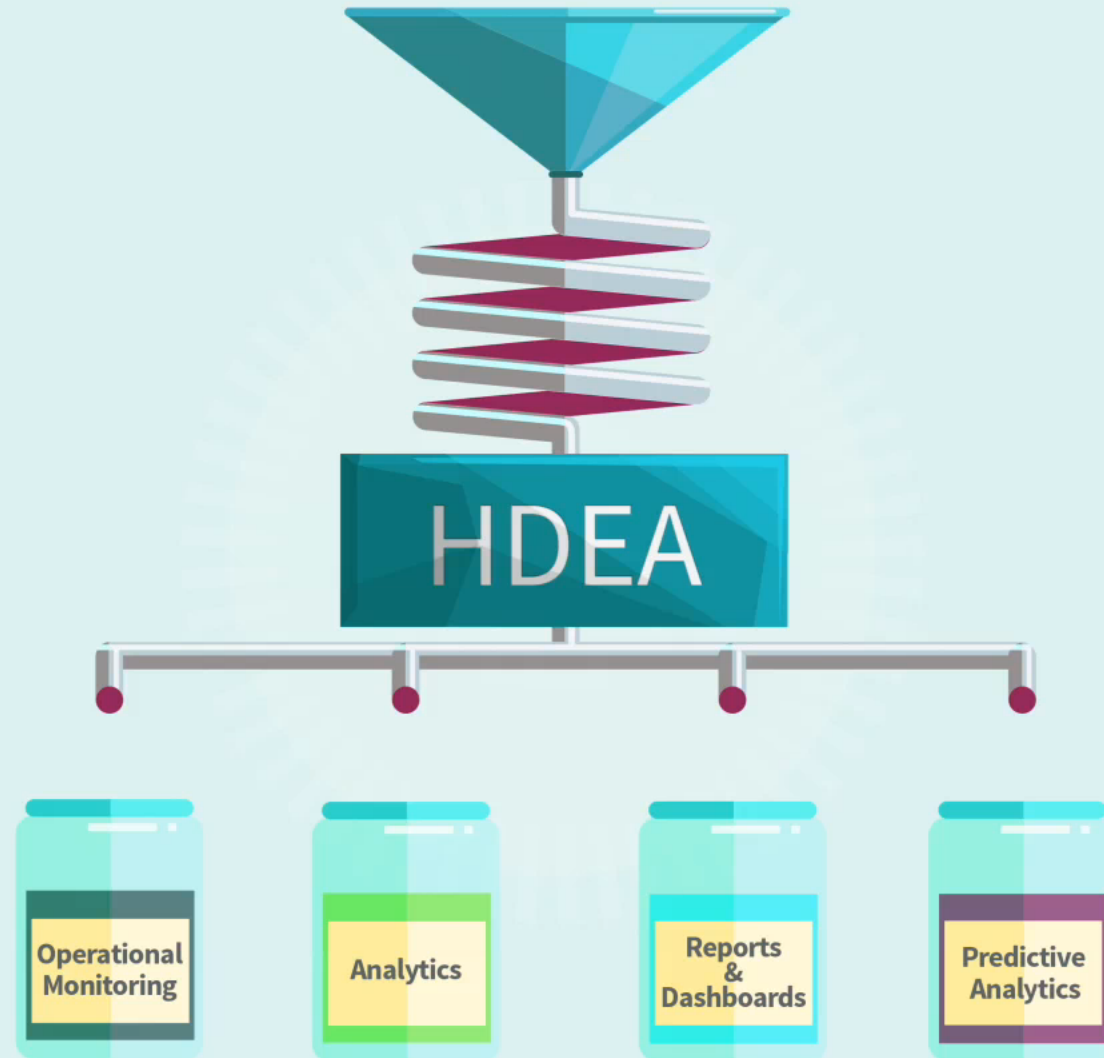
- Product Design
- Transactional Platforms
- Population health management
- ACO, Care Management platforms
- Patient/Consumer Engagement

LIFE SCIENCES

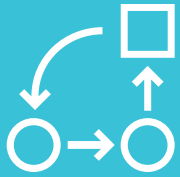
- Scientific Informatics Workflows
- Advanced Algorithms and Big Data
- Knowledge Management / Data Curation
- Enterprise Life Science Platforms

SAMPLE CLENTS





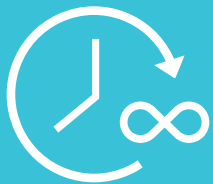
HEALTHCARE DATA LANDSCAPE - CURRENT ISSUES



Need better operational control for data flow and quality of data



Predictive analytics is missing



Change takes too long



Solutions are too complex (multiple vendors & integrations)



Ad-hoc reporting is needed

IDEA OF HDEA

- Data driven business and operational insights
- Model and Predict with increasing precision
- Just "plug it in", no changes to existing systems
- Minimize change impact, enhance in days



SOLUTION FEATURES



Easily configurable business and predictive analytics



Out of the box availability of ad-hoc reporting



Operational dashboards (data infrastructure and quality)



Ease of multiple data sources integration

<epam> | splunk>

HDEA - HEALTHCARE DATA EXCHANGE & ANALYTICS



.conf2016

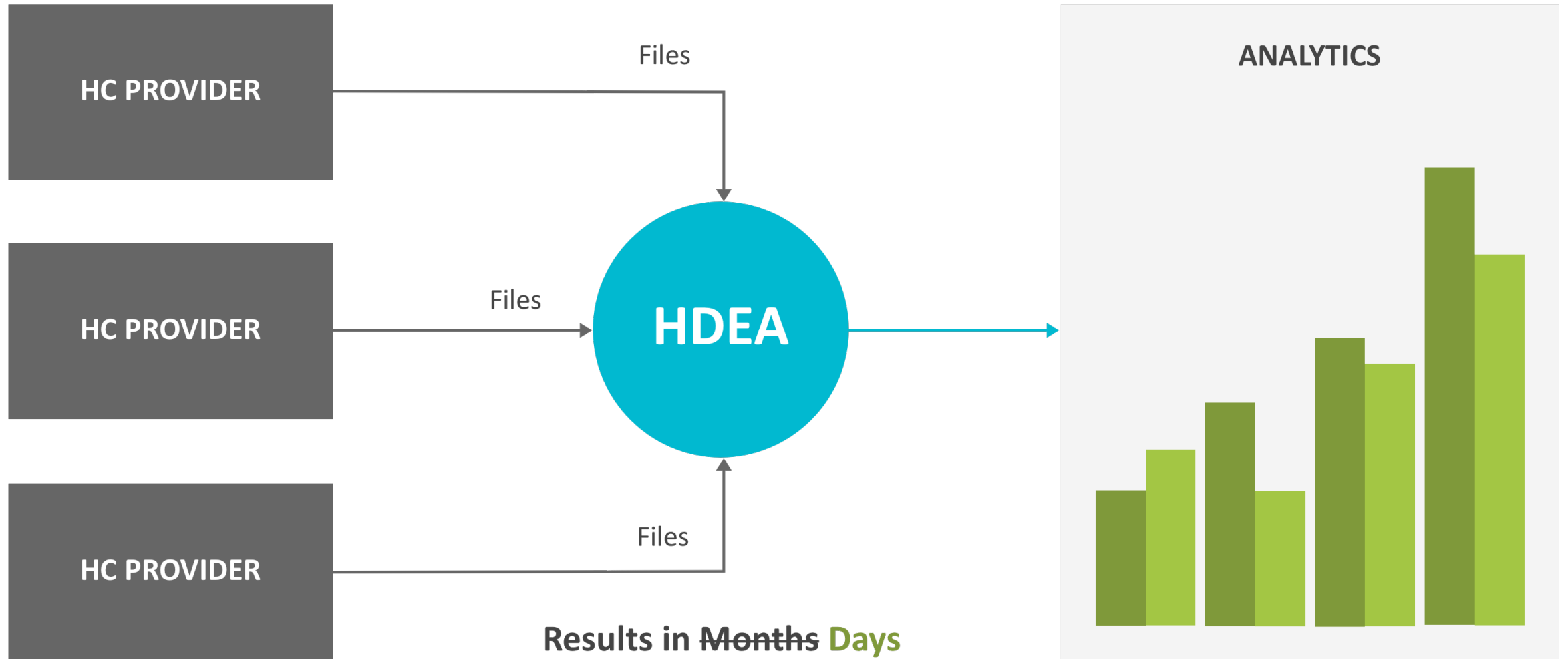
splunk>

HDEA - HEALTHCARE DATA EXCHANGE & ANALYTICS

Business and operations
insights & analytics
dashboard



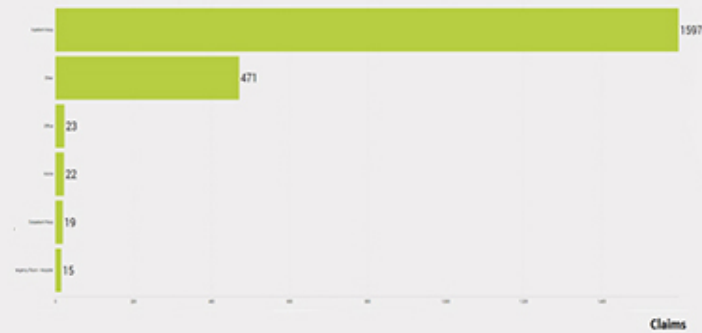
MULTIPLE DATA SOURCES INTEGRATED IN HOURS



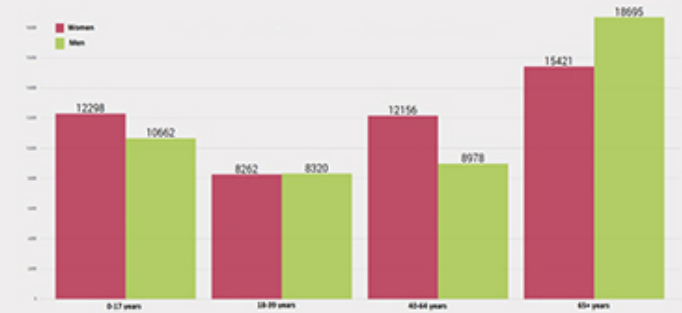
BUSINESS TRENDS DISCOVERED FASTER

BUSINESS INSIGHTS
INTO COST, SERVICES AND
PATIENTS RELATED KPIS

CLAIMS BY TYPE OF VISITS



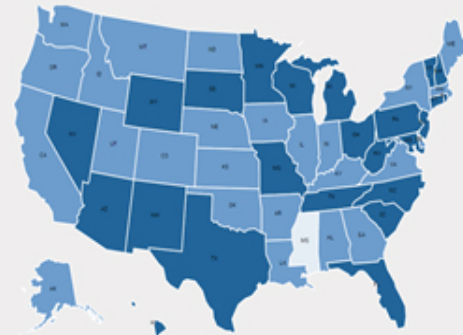
PATIENTS BY GENDER AND AGE



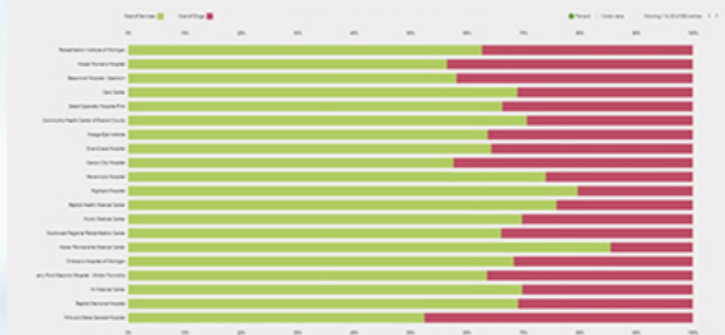
TOP 20 DIAGNOSIS



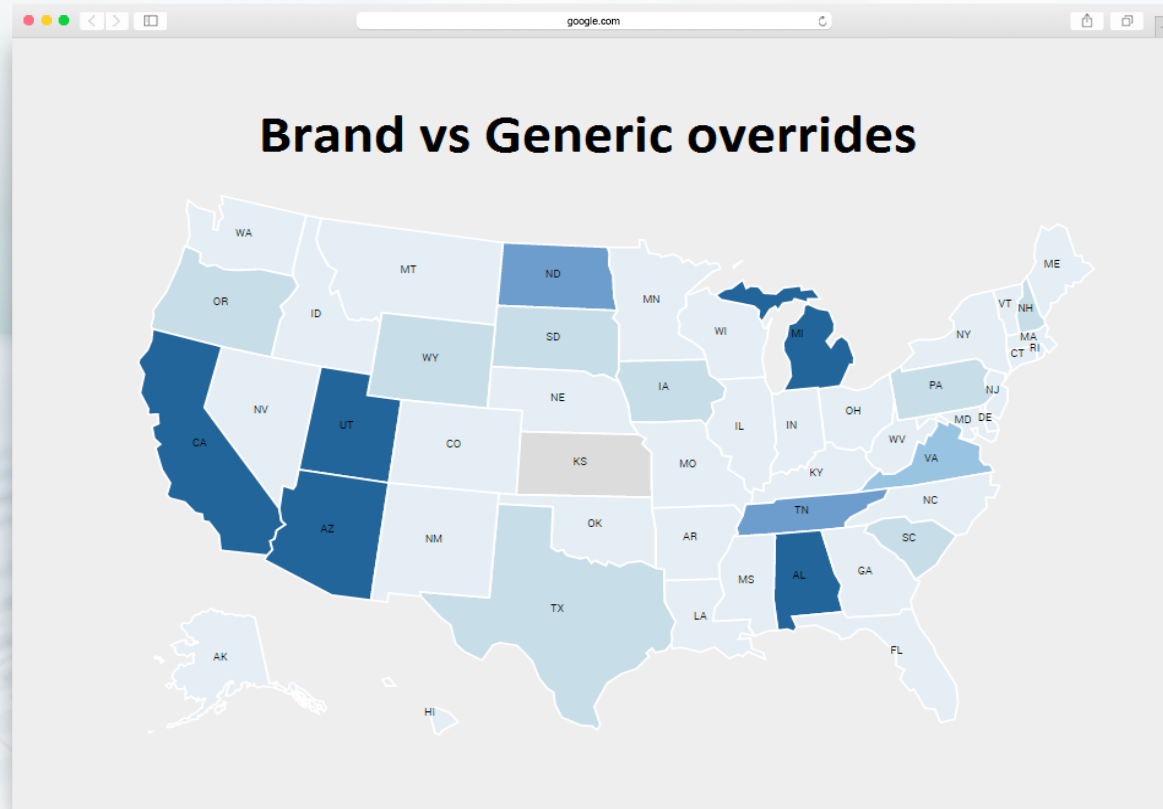
MEDICAL PROCEDURES DISTRIBUTION



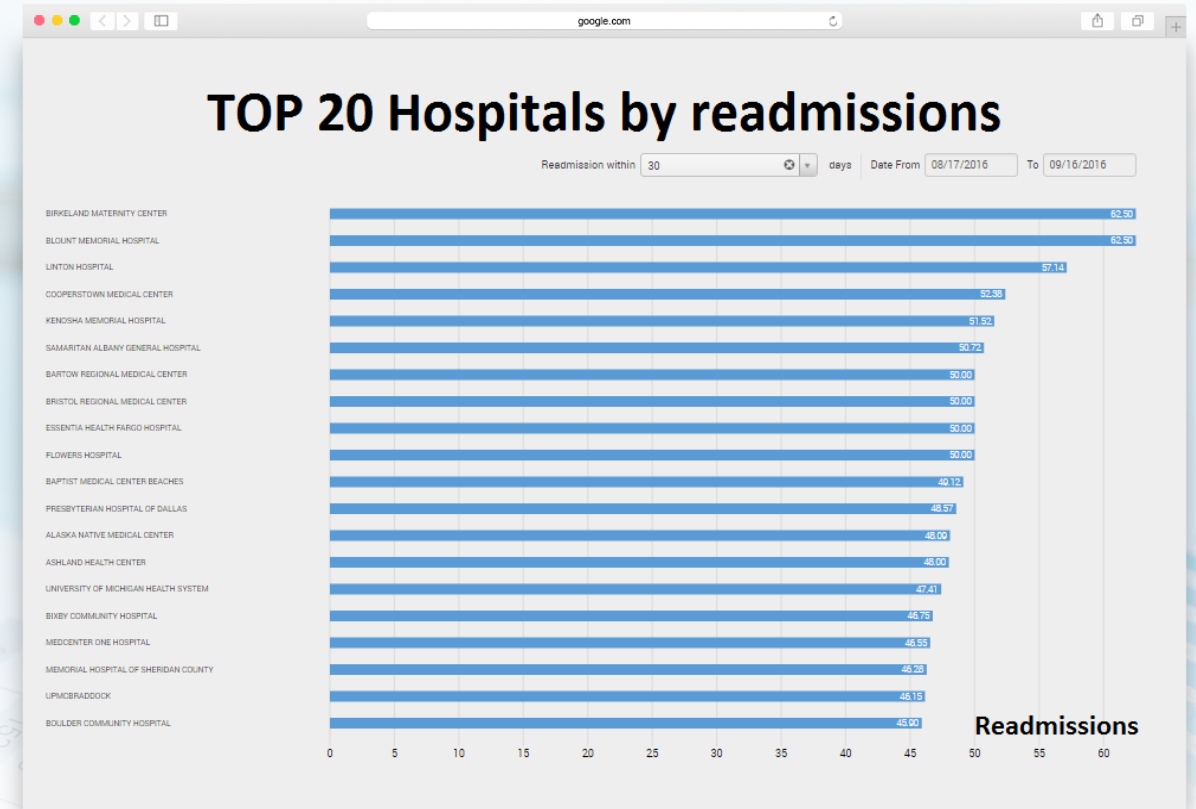
COST OF SERVICES VS PRESCRIPTIONS



DEEPER BUSINESS INSIGHTS & RESEARCH ENABLED



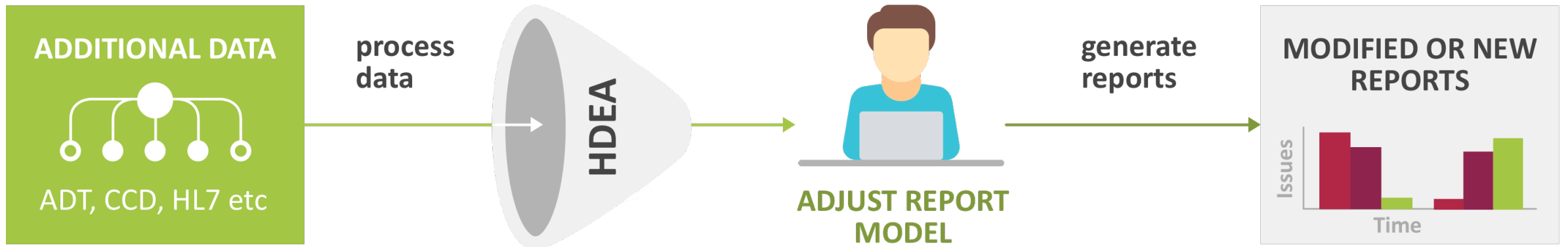
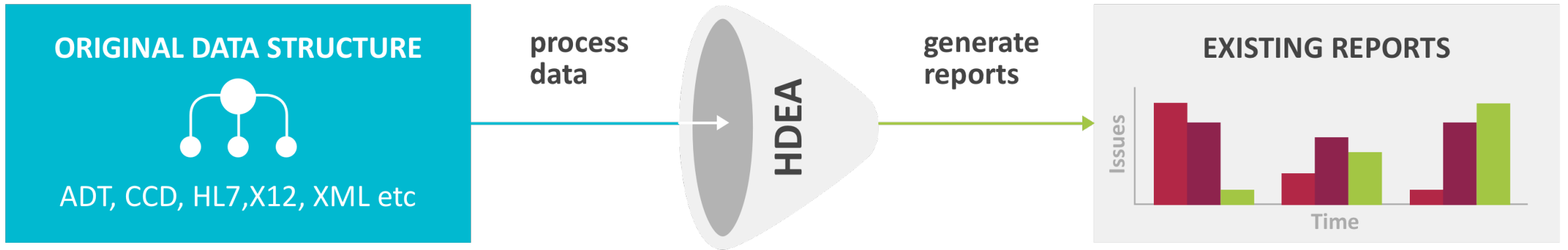
Analyzing Brand vs Generic Meds overrides



Analyzing Readmissions patterns

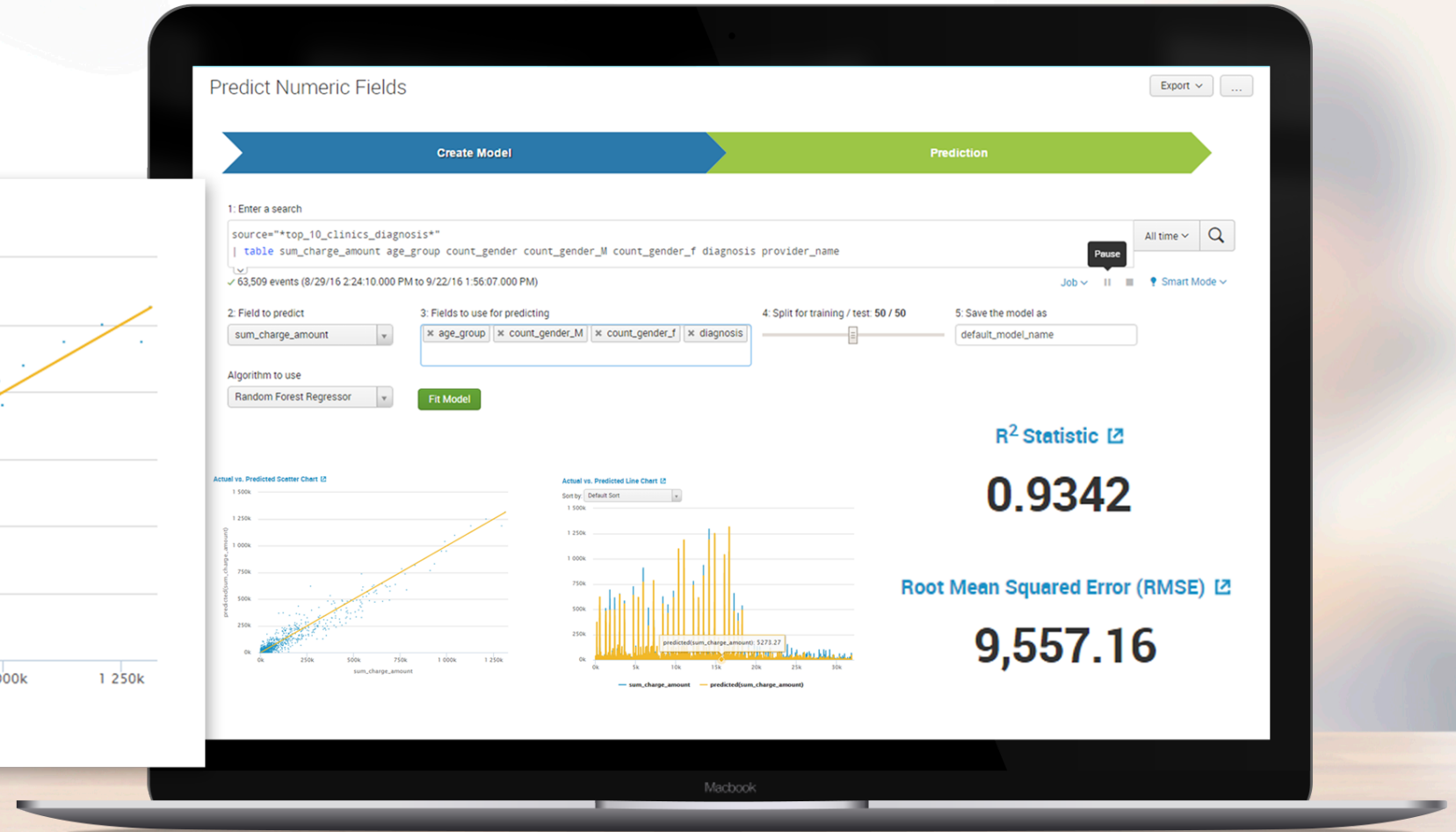
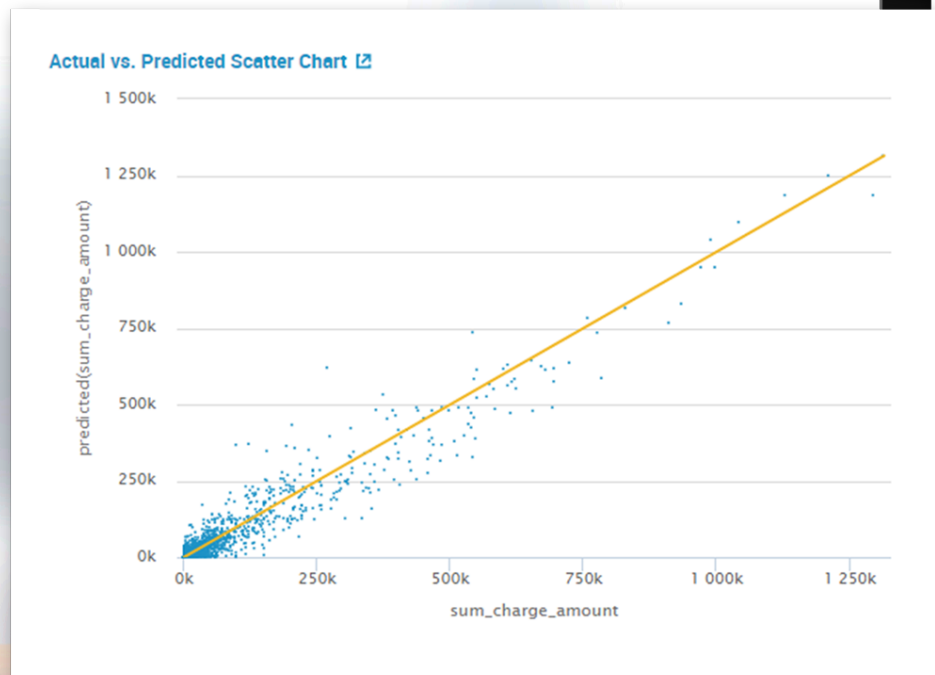
AD HOC REPORTING

Handling data structure changes and format changes without IT involvement



USE PREDICTIVE ANALYTICS TO DISCOVER FUTURE TRENDS

Predicting future claims costs for a selected diagnosis



PREDICTIVE ANALYTICS CAPABILITIES ENABLERS



Predicting future claims cost for selected diagnosis



Predicting high-risk patients



Predicting drugs consumption with seasonality



Predicting system failures

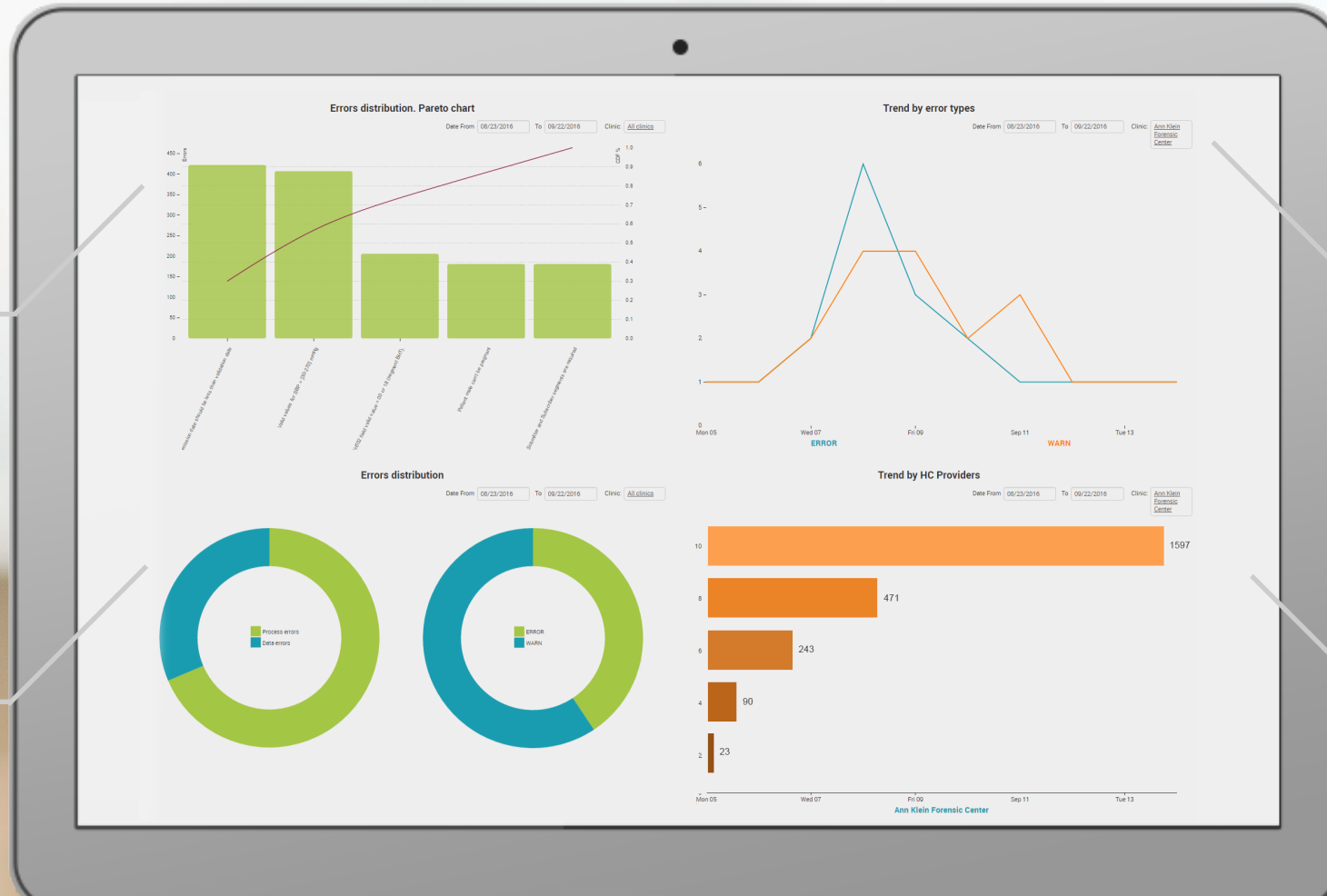
OPERATIONAL DATA FLOW CONTROL IS CRITICAL

DATA QUALITY
TRENDS

OVERALL ISSUES
DISTRIBUTION

ISSUES BY
TYPES

ISSUES BY
HC PROVIDERS



REAL-TIME DATA CONTROL ENABLERS

HDEA
<epam>

PREDICTION CAPABILITIES

- Predict system failures
- Predict systems outputs
- Predict system scalability

ISSUES TRENDS

- Issues trends and statistics
- Errors statistics

REAL-TIME PROCESSES MONITORING & ALERTS

- Manage execution time thresholds
- Detect Slow Processes
- Detect Stuck Processes
- File transfer monitoring

DATA FLOW AND QUALITY ISSUES DETECTION

- Data Integrity errors detection
- Data consistency errors detection
- Data parsing errors detection



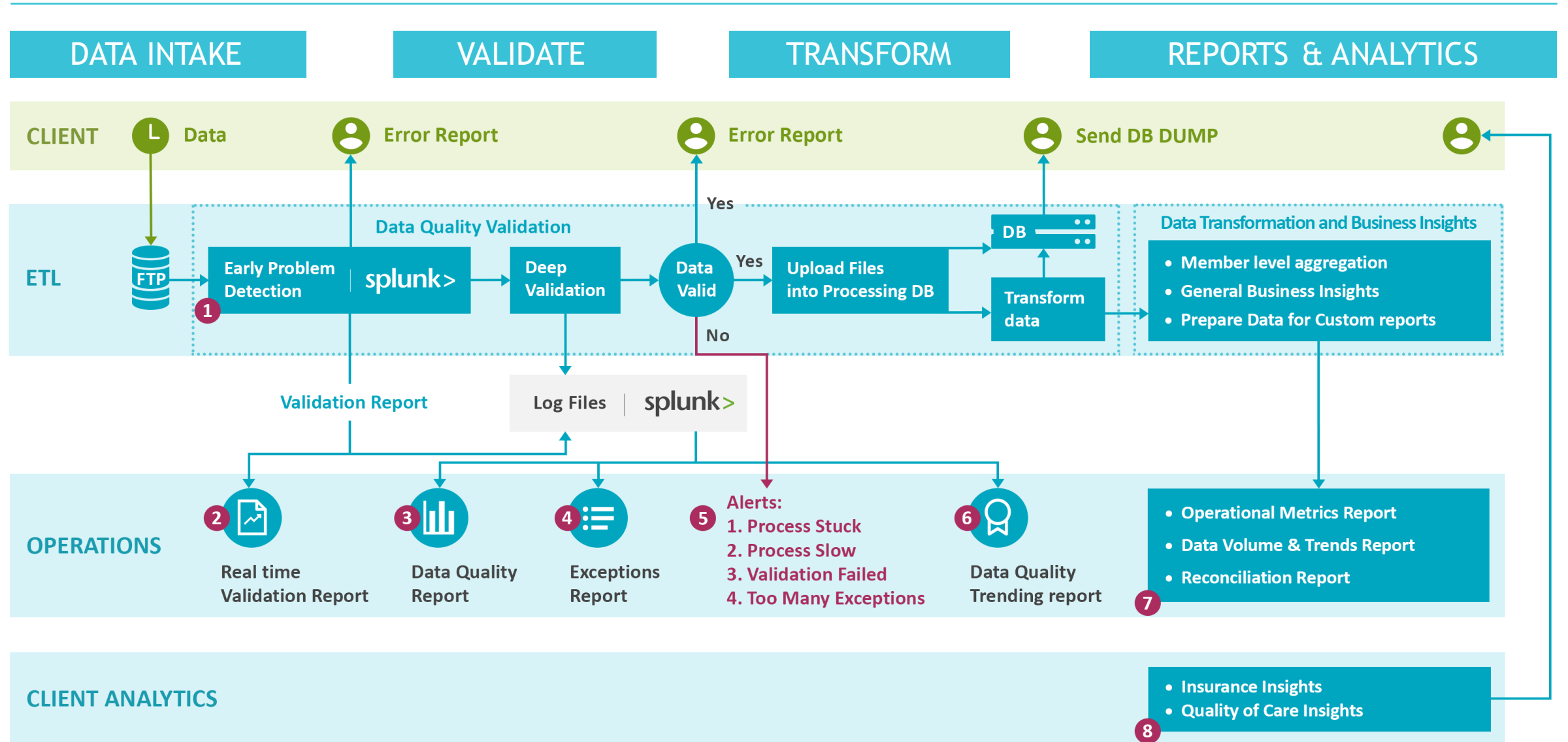
EPAM Solution Demo



.conf2016



HEALTHCARE DATA PROCESSES & HDEA CONCEPTS





Lessons Learned



.conf2016



LESSONS LEARNED



1. POWERFUL PLATFORM

Splunk provides really powerful, flexible, and easy to use platform, including Machine Learning primitives and algorithms.

2. EASY TO BUILD

Splunk app development is not rocket-science. A team of 5 software engineers delivered in 3 months.

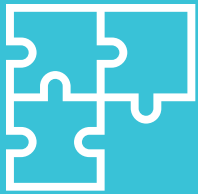
3. RICH UI + EXTENDIBILITY

Rich out-of-the-box Splunk capabilities for UI development allow to create the ad-hoc report from scratch.

4. PERFORMANCE, KEY FEATURES

Indexing capacity, real-time queries, ability to monitor online processes, various kind of alerts provide ways to achieve success.

POTENTIAL AND FUTURE ENHANCEMENTS



AREAS FOR FURTHER DEVELOPMENT AND IMPROVEMENTS

- Commercialization.
- Additional features (quality of service, care circles detection, cost effectiveness, extended and detailed fraud detection analytic).
- Visualization improvements (drilldowns and multi-dimensional searches).
- Robust model for all X12 transaction types. Processing and ad-hoc data processing



EPAM + SPLUNK COOPERATION FOOTPRINT

- Ability to deliver SPLUNK - based solutions from within EPAM labs.
- Help in testing, prototyping, verification of early versions of Splunk products.
- Ability to deliver EPAM vertical industry solutions based on Splunk products and EPAM domain knowledge.
- Collaborative knowledge and key assets will be shared with Splunk community.

<epam> | splunk>

THANK YOU

vmelnik@splunk.com

igal_vainer@epam.com

.conf2016

splunk>