



Bushfire Alerting Automation System

Nicholas Laurent | Managed Services Manager

Converging Data

18/07/2017 | Washington, DC

Forward-Looking Statements

During the course of this presentation, we may make forward-looking statements regarding future events or the expected performance of the company. We caution you that such statements reflect our current expectations and estimates based on factors currently known to us and that actual events or results could differ materially. For important factors that may cause actual results to differ from those contained in our forward-looking statements, please review our filings with the SEC.

The forward-looking statements made in this presentation are being made as of the time and date of its live presentation. If reviewed after its live presentation, this presentation may not contain current or accurate information. We do not assume any obligation to update any forward looking statements we may make. In addition, any information about our roadmap outlines our general product direction and is subject to change at any time without notice. It is for informational purposes only and shall not be incorporated into any contract or other commitment. Splunk undertakes no obligation either to develop the features or functionality described or to include any such feature or functionality in a future release.

Splunk, Splunk>, Listen to Your Data, The Engine for Machine Data, Splunk Cloud, Splunk Light and SPL are trademarks and registered trademarks of Splunk Inc. in the United States and other countries. All other brand names, product names, or trademarks belong to their respective owners. © 2017 Splunk Inc. All rights reserved.



Rural Fire Service Of NSW

- ▶ The NSW Rural Fire Service (NSW RFS) is the world's largest volunteer fire service (74,162 Members). Our members provide fire and emergency services to approximately 95 percent of NSW. NSW RFS members attend a range of incidents and activities:
- ▶ Bush and grass fires
- ▶ House and structural fires
- ▶ Storm damage
- ▶ Search and rescue
- ▶ Motor vehicle accidents
- ▶ Community education
- ▶ Bush fire mitigation.



```

130.60.4 - - [07/Jan 18:10:57:153] "GET /category.screen?category_id=GIFTS&JSESSIONID=5D15L4FF10ADFF10 HTTP 1.1" 404 720 "http://buttercup-shopping.com/cart.do?action=view&itemId=EST-6&product_id=FI-SW-03"
128.241.220.82 - - [07/Jan 18:10:57:123] "GET /product.screen?product_id=FL-DSH-01&JSESSIONID=5D35L7FF6ADFF9 HTTP 1.1" 404 3322 "http://buttercup-shopping.com/cart.do?action=purchase&itemId=EST-26&product_id=K9-CW-01"
317.27.160.0.0 - - [07/Jan 18:10:56:156] "GET /oldlink?item_id=EST-26&JSESSIONID=5D55L9FF1ADFF3 HTTP 1.1" 200 1318 "http://buttercup-shopping.com/cart.do?action=changequantity&itemId=EST-18&product_id=AV-CB-01&JSESSIONID=5D55L9FF1ADFF3"
130.60.4 - - [07/Jan 18:10:57:153] "GET /category.screen?category_id=FLOWERS&JSESSIONID=5D55L9FF1ADFF3 HTTP 1.1" 200 3865 "http://buttercup-shopping.com/cart.do?action=remove&itemId=EST-18"
128.241.220.82 - - [07/Jan 18:10:57:123] "GET /product.screen?product_id=FL-DSH-01&JSESSIONID=5D35L7FF6ADFF9 HTTP 1.1" 404 3322 "http://buttercup-shopping.com/cart.do?action=purchase&itemId=EST-26&product_id=K9-CW-01"
317.27.160.0.0 - - [07/Jan 18:10:56:156] "GET /oldlink?item_id=EST-26&JSESSIONID=5D55L9FF1ADFF3 HTTP 1.1" 200 1318 "http://buttercup-shopping.com/cart.do?action=changequantity&itemId=EST-18&product_id=AV-CB-01&JSESSIONID=5D55L9FF1ADFF3"
130.60.4 - - [07/Jan 18:10:57:153] "GET /category.screen?category_id=FLOWERS&JSESSIONID=5D55L9FF1ADFF3 HTTP 1.1" 200 3865 "http://buttercup-shopping.com/cart.do?action=remove&itemId=EST-18"
128.241.220.82 - - [07/Jan 18:10:57:123] "GET /product.screen?product_id=FL-DSH-01&JSESSIONID=5D35L7FF6ADFF9 HTTP 1.1" 404 3322 "http://buttercup-shopping.com/cart.do?action=purchase&itemId=EST-26&product_id=K9-CW-01"
317.27.160.0.0 - - [07/Jan 18:10:56:156] "GET /oldlink?item_id=EST-26&JSESSIONID=5D55L9FF1ADFF3 HTTP 1.1" 200 1318 "http://buttercup-shopping.com/cart.do?action=changequantity&itemId=EST-18&product_id=AV-CB-01&JSESSIONID=5D55L9FF1ADFF3"

```


Sydney Blue Mountains



- ▶ **Population:** 76,904 (2016)
- ▶ **Area:** 1,430 km² (552.1 sq mi)
- ▶ Home to the **WOLLEMI PINE**

130.60.4 - - [07/Jan 18:10:57:153] "GET /category.screen?category_id=GIFTS&JSESSIONID=5D15L9FF1ADFF3 HTTP 1.1" 404 720 "http://buttercup-shopping.com/cart.do?action=view&itemId=EST-6&product_id=F1-5W-03"
128.241.220.82 - - [07/Jan 18:10:57:123] "GET /product.screen?product_id=FL-DSH-01&JSESSIONID=5D55L7FF6ADFF9 HTTP 1.1" 404 3322 "http://buttercup-shopping.com/cart.do?action=purchase&itemId=EST-268product_id=K0-CW-01"
ows NT 27.160.0.0 - - [07/Jan 18:10:57:153] "GET /category.screen?category_id=GIFTS&JSESSIONID=5D15L9FF1ADFF3 HTTP 1.1" 200 2423 "http://buttercup-shopping.com/cart.do?action=purchase&itemId=EST-268product_id=K0-CW-01"
itemId=EST-16&product_id=RP-LI-02" 468 125.17 14.1.1.1 [07/Jan 18:10:56:156] "GET /oldlink?item_id=EST-26&JSESSIONID=5D55L9FF1ADFF3 HTTP 1.1" 200 1318 "http://buttercup-shopping.com/changequantity&itemId=EST-18&product_id=AV-CB-01&JSESSIONID=5D15L9FF1ADFF3 HTTP 1.1" 200 3855 "http://buttercup-shopping.com/cart.do?action=purchase&itemId=EST-268product_id=K0-CW-01"
action=purchase&itemId=EST-26&product_id=RP-LI-02" 468 125.17 14.1.1.1 [07/Jan 18:10:56:156] "GET /oldlink?item_id=EST-26&JSESSIONID=5D55L9FF1ADFF3 HTTP 1.1" 200 1318 "http://buttercup-shopping.com/changequantity&itemId=EST-18&product_id=AV-CB-01&JSESSIONID=5D15L9FF1ADFF3 HTTP 1.1" 200 3855 "http://buttercup-shopping.com/cart.do?action=purchase&itemId=EST-268product_id=K0-CW-01"
action=purchase&itemId=EST-26&product_id=RP-LI-02" 468 125.17 14.1.1.1 [07/Jan 18:10:56:156] "GET /oldlink?item_id=EST-26&JSESSIONID=5D55L9FF1ADFF3 HTTP 1.1" 200 1318 "http://buttercup-shopping.com/changequantity&itemId=EST-18&product_id=AV-CB-01&JSESSIONID=5D15L9FF1ADFF3 HTTP 1.1" 200 3855 "http://buttercup-shopping.com/cart.do?action=purchase&itemId=EST-268product_id=K0-CW-01"

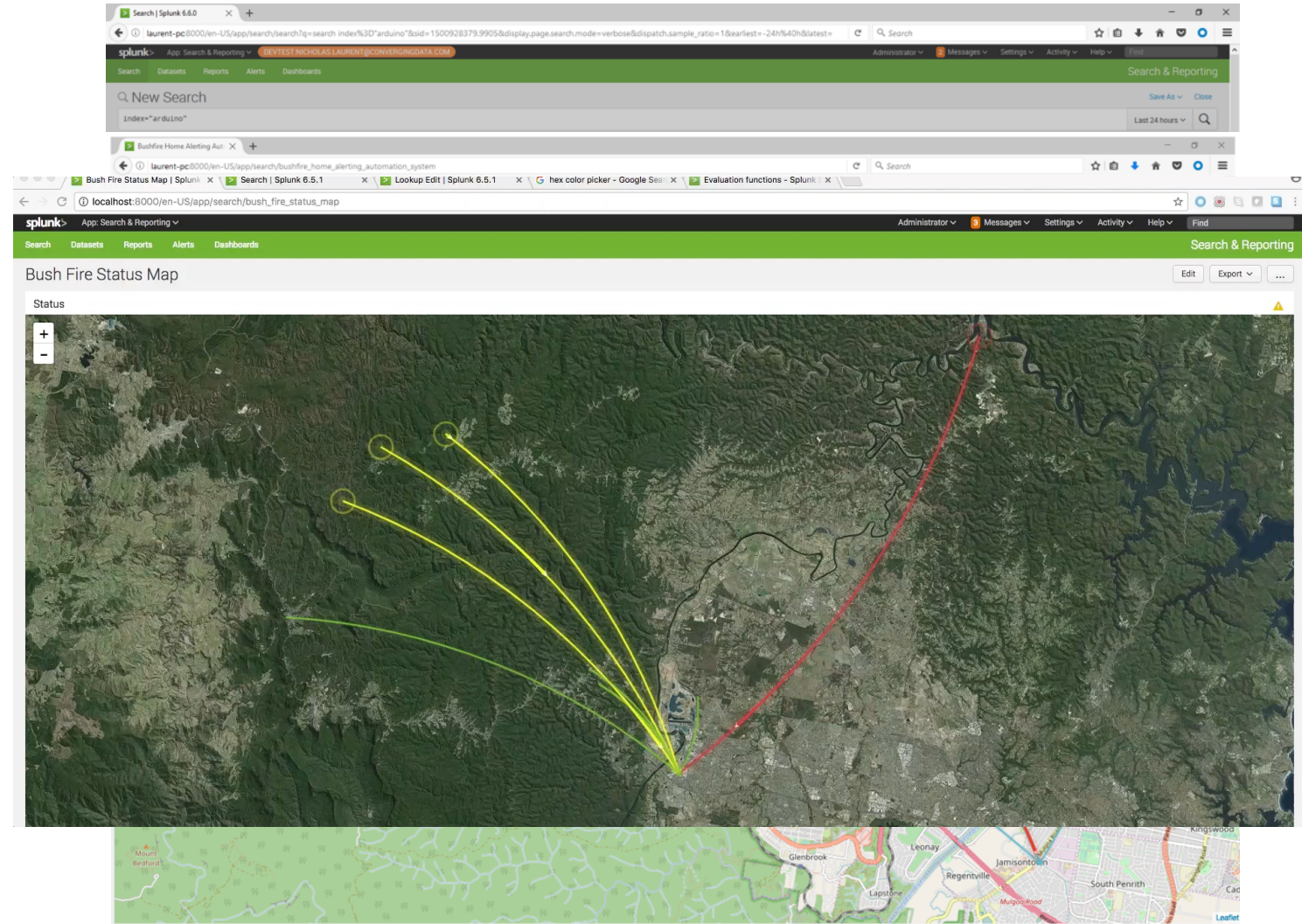
Rebuilding

- ▶ New building codes
- ▶ New building materials
- ▶ Lack of Automation with Home Safety systems
- ▶ 10/50 vegetation clearing
- ▶ 10,000L (2641gal) water tanks for firefighting



Splunk

- ▶ Getting the Data in?
- ▶ UF?
- ▶ Stream?
- ▶ HTTP Event Collector?
- ▶ Dashboards
- ▶ Google Maps
- ▶ Nice historical charts
- ▶ Email to SMS alerts configured.



Splunk Cloud Splunk 4 Good

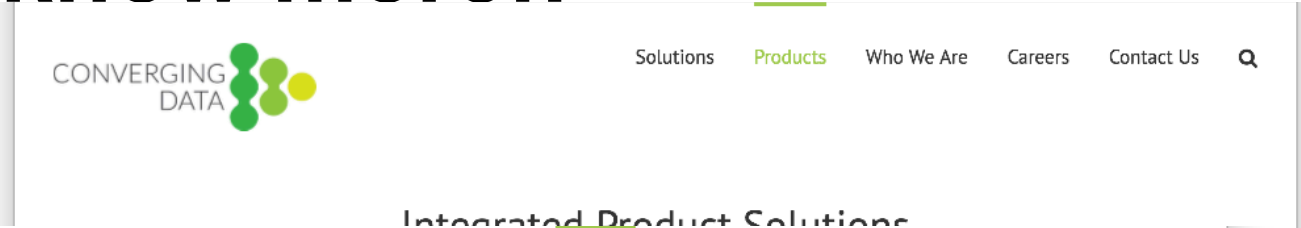
- ▶ Splunk Cloud is ideal for this use case.
- ▶ Provides a central point, accessible via web from anywhere.
- ▶ Confidence of being available 24/7
- ▶ Splunk Cloud is affordable and scalable.
- ▶ Splunk 4 Good
- ▶ Key points:
 - NON-Profit
 - Helping the community
- ▶ Do you have an idea for Splunk 4 Good?

```
130.60.4 - - [07/Jan 18:10:57:153] "GET /category.screen?category_id=GIFTS&JSESSIONID=5D5SLAFF10ADFF10 HTTP 1.1" 404 720 "http://buttercup-shopping.com/cart.do?action=view&itemId=EST-6&product_id=FI-SW-01" "Mozilla/5.0 (Windows NT 5.1; SV1; .NET CLR 1.1.4322)" 468 125.17 14.189
128.241.220.82 - - [07/Jan 18:10:57:123] "GET /product.screen?product_id=FL-DSH-01&JSESSIONID=5D5SL7FF6ADFF0 HTTP 1.1" 404 3322 "http://buttercup-shopping.com/cart.do?action=purchase&itemId=EST-268product_id=KQ-CW-01" "Mozilla/5.0 (Windows NT 5.1; SV1; .NET CLR 1.1.4322)" 468 125.17 14.189
317 27.160.0.0 - - [07/Jan 18:10:56:156] "GET /oldlink?item_id=EST-26&JSESSIONID=5D5SL9FF1ADFF3 HTTP 1.1" 200 1318 "http://buttercup-shopping.com/cart.do?action=changequantity&itemId=EST-18&product_id=AV-CB-01&JSESSIONID=5D5SL7FF6ADFF0 HTTP 1.1" 200 2423 "http://buttercup-shopping.com/cart.do?action=purchase&itemId=EST-268product_id=KQ-CW-01" "Mozilla/5.0 (Windows NT 5.1; SV1; .NET CLR 1.1.4322)" 468 125.17 14.189
10.2.1.1 - - [07/Jan 18:10:56:156] "GET /category.screen?category_id=FLOWERS&JSESSIONID=5D5SL7FF6ADFF0 HTTP 1.1" 200 3885 "http://buttercup-shopping.com/cart.do?action=remove&itemId=EST-14&product_id=AV-CB-01" "Mozilla/5.0 (Windows NT 5.1; SV1; .NET CLR 1.1.4322)" 468 125.17 14.189
```

Want to know more!!

▶ Check us out
www.convergingdata.com

▶ Email us,
sales@convergingdata.com



130.60.4 - - [07/Jan 18:10:57:153] "GET /category.screen?category_id=GIFTS&JSESSIONID=5D15LAF10ADFF10 HTTP 1.1" 404 720 "http://buttercup-shopping.com/cart.do?action=view&itemId=EST-6&product_id=F1-5W-01"
128.241.220.82 - - [07/Jan 18:10:57:123] "GET /product.screen?product_id=FL-DSH-01&JSESSIONID=5D35L7FF6ADFF0 HTTP 1.1" 404 3322 "http://buttercup-shopping.com/cart.do?action=purchase&itemId=EST-268product_id=K9-CU-01"
317.27.160.0.0 - - [07/Jan 18:10:56:156] "GET /oldlink?item_id=EST-26&JSESSIONID=5D55L9FF1ADFF3 HTTP 1.1" 200 1318 "http://buttercup-shopping.com/cart.do?action=changequantity&itemId=EST-18&product_id=AV-CB-01&JSESSIONID=5D185L8FF2ADFF9 HTTP 1.1" 200 3865 "http://buttercup-shopping.com/cart.do?action=remove&itemId=EST-108"
10.0.0.0 - - [07/Jan 18:10:57:153] "GET /category.screen?category_id=FLOWERS&JSESSIONID=5D185L8FF2ADFF9 HTTP 1.1" 200 3865 "http://buttercup-shopping.com/cart.do?action=remove&itemId=EST-108"
10.0.0.0 - - [07/Jan 18:10:57:153] "GET /category.screen?category_id=FLOWERS&JSESSIONID=5D185L8FF2ADFF9 HTTP 1.1" 200 3865 "http://buttercup-shopping.com/cart.do?action=remove&itemId=EST-108"

Thank You

Don't forget to **rate this session** in the
.conf2017 mobile app

