

Take a Walk into the Art Of Dark Sky Photography

Michael Uschmann | MuS SplunkTrustee and Fezwearer

John Barnett | SE @ GKC

26th September 2017 | Washington, DC

Forward-Looking Statements

During the course of this presentation, we may make forward-looking statements regarding future events or the expected performance of the company. We caution you that such statements reflect our current expectations and estimates based on factors currently known to us and that actual events or results could differ materially. For important factors that may cause actual results to differ from those contained in our forward-looking statements, please review our filings with the SEC.

The forward-looking statements made in this presentation are being made as of the time and date of its live presentation. If reviewed after its live presentation, this presentation may not contain current or accurate information. We do not assume any obligation to update any forward looking statements we may make. In addition, any information about our roadmap outlines our general product direction and is subject to change at any time without notice. It is for informational purposes only and shall not be incorporated into any contract or other commitment. Splunk undertakes no obligation either to develop the features or functionality described or to include any such feature or functionality in a future release.

Splunk, Splunk>, Listen to Your Data, The Engine for Machine Data, Splunk Cloud, Splunk Light and SPL are trademarks and registered trademarks of Splunk Inc. in the United States and other countries. All other brand names, product names, or trademarks belong to their respective owners. © 2017 Splunk Inc. All rights reserved.

“Do **not** look at stars as bright spots only.
Try to take in the **vastness** of the
universe.”

Maria Mitchell, Astronomer

My First Dark Sky Photography Experience

After 45 minutes of driving into the desert near Phoenix, AZ....



Ever Wanted To Take Photos Like This?

In this session you will learn how it is done and how Splunk can help you with it!



© Michael Uschmann

130.60.4 - - [07/Jan 18:10:57:153] "GET /category.screen?category_id=GIFTS&JSESSIONID=5015LAF10ADFF10 HTTP 1.1" 404 720 "http://buttercup-shopping.com/cart.do?action=purchase&itemId=EST-26&product_id=EST-6&quantity=1" Max 11.07.0
128.241.220.82 - - [07/Jan 18:10:57:123] "GET /product.screen?product_id=FL-DSH-01&JSESSIONID=5055L7FF1ADFF9 HTTP 1.1" 404 3322 "http://buttercup-shopping.com/cart.do?action=purchase&itemId=EST-26&product_id=EST-6&quantity=1" Max 11.07.0
317.27.160.0.0 - - [07/Jan 18:10:57:153] "GET /category.screen?category_id=GIFTS&JSESSIONID=5015LAF10ADFF10 HTTP 1.1" 404 720 "http://buttercup-shopping.com/cart.do?action=purchase&itemId=EST-26&product_id=EST-6&quantity=1" Max 11.07.0
ows NY 5.1: SV1: - - [07/Jan 18:10:57:123] "GET /product.screen?product_id=FL-DSH-01&JSESSIONID=5055L7FF1ADFF9 HTTP 1.1" 404 3322 "http://buttercup-shopping.com/cart.do?action=purchase&itemId=EST-26&product_id=EST-6&quantity=1" Max 11.07.0
item_id=EST-16&product_id=RP-LI-02" 468 125.17 14.11.189] "GET /category.screen?category_id=GIFTS&JSESSIONID=5015LAF10ADFF10 HTTP 1.1" 404 720 "http://buttercup-shopping.com/cart.do?action=purchase&itemId=EST-26&product_id=EST-6&quantity=1" Max 11.07.0
toaction=purchase&itemId=EST-26&product_id=EST-6&quantity=1" Max 11.07.0
opping.com/purchase&itemId=EST-26&product_id=EST-6&quantity=1" Max 11.07.0
/buttercup-shopping.com/purchase&itemId=EST-26&product_id=EST-6&quantity=1" Max 11.07.0

What You Will Learn In This Session...

Foundations to our visualizations

“500 – This is not Sparta”

– *What is the 500 rule*

“Dude, where is the milky way?”

– *Astronomy basics*

“Light pollution”

– *Save a dolphin*

“Use Splunk for this ... really?”

– *Adding everything onto the Splunk platform to get the perfect dark sky shot*

To help *you* take sharper, clearer *photographs*

Getting The Basics Right

The 500 rule, other Astronomy basics, and light pollution

In the field rule of thumb

Dude, Where Is The Milky Way?

Look up!

- ▶ Best time to observe the bright galactic center of the Milky Way?
 - From about mid-March through mid-October
- ▶ Use a planisphere
- ▶ Major constellations along the Milky Way Galactic Plane:
 - Scorpius
 - Sagittarius
 - The Summer Triangle
 - Cassiopeia
 - Crux or the Southern Cross
 - Orion



Pukerua Bay, NZ
July 2015, Canon 5D

▶ There are apps for that...

Light Pollution?

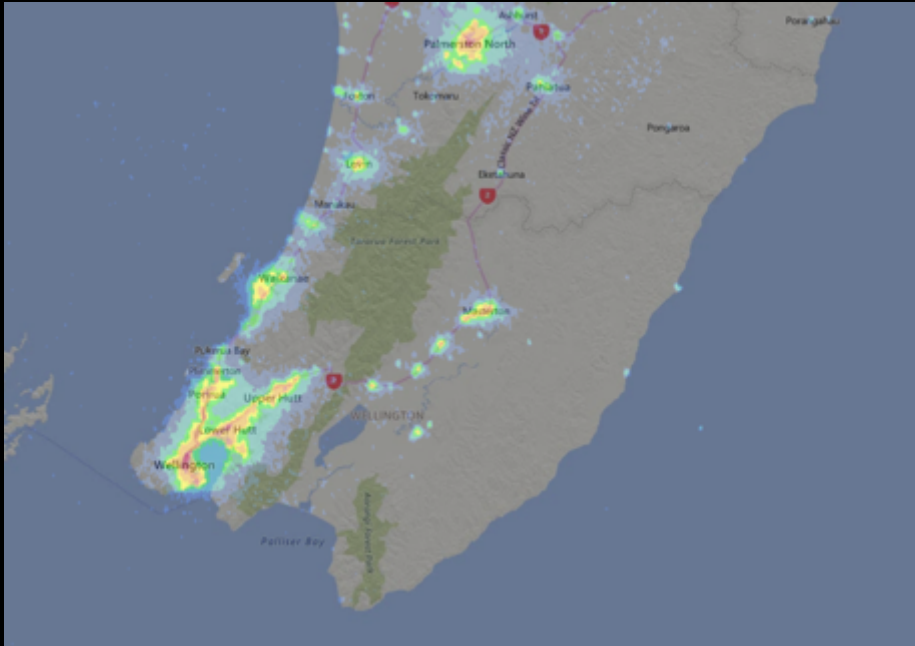
Get out of town!

- ▶ Bortle Dark-Sky Scale
- ▶ The brighter the background light, the dimmer the sky
- ▶ Natural light pollution caused by volcanoes, thunderstorms or other natural sources.



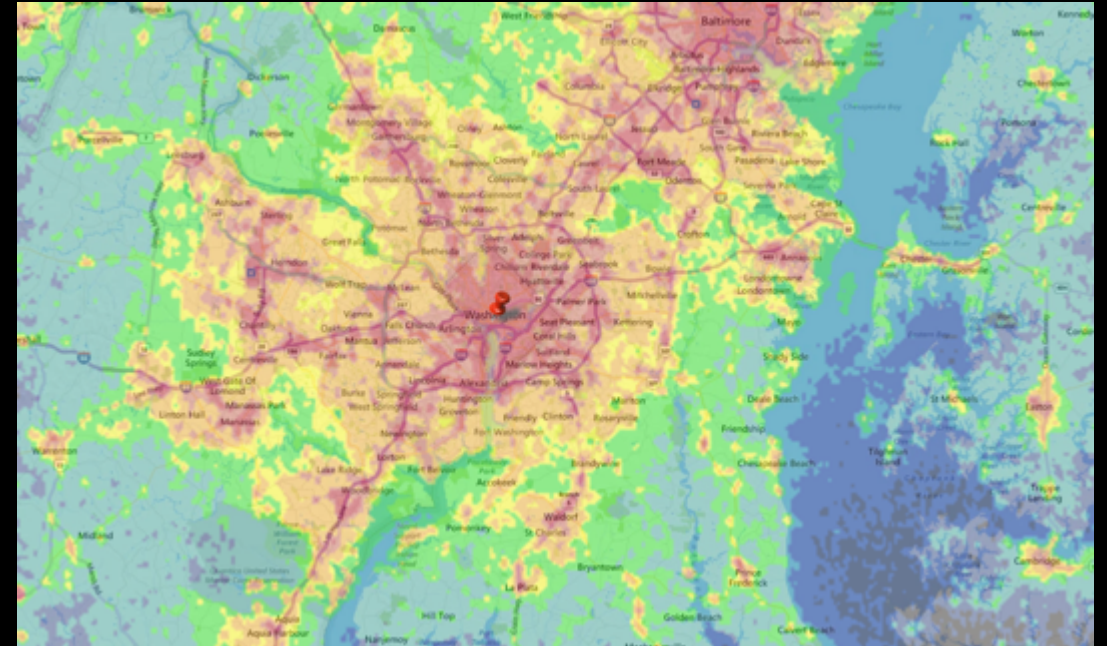
Spot The Difference

We must be using candles in New Zealand...



► New Zealand's Capital City

- Wellington
- Population 398,000
- 2,300 people per square mile



► United States of America Capital City

- Washington D.C.
- Population 672,228
- 11,000 people per square mile

Where Is the Worst Natural Light Pollution on Earth?

Antarctica, due to snow reflection and the auroras

“Astronomers, like **burglars** and jazz musicians, operate best at **night**.”

Miles Kington, Journalist

Sound Complicated?

Let Splunk Do The Job For You!

Getting all the data into the Splunk platform and find the perfect location

Where Does It All Come From? (Credits)

Standing on the shoulders of giants

Moon Phases

The United States Naval
Observatory (USNO)



Light Pollution

NASA and Magic



Google Directions

Navigation to the darkest
spot



Weather

OpenWeather API



130.60.4 - - [07/Jan 18:10:57:153] "GET /category.screen?category_id=GIFTS&JSESSIONID=5015LAF10ADFF10 HTTP 1.1" 404 720 "http://buttercup-shopping.com/cart.do?action=view&itemId=EST-6&product_id=EST-3LW-01" "Mozilla/5.0 (Macintosh; Intel Mac OS X 10_12_0; rv:52.0) Gecko/20100101 Firefox/52.0"
128.241.220.82 - - [07/Jan 18:10:57:123] "GET /product.screen?product_id=FL-DSH-01&JSESSIONID=5055L7FF6ADFF9 HTTP 1.1" 404 3322 "http://buttercup-shopping.com/cart.do?action=purchase&itemId=EST-2&product_id=EST-2LW-01" "Mozilla/5.0 (Macintosh; Intel Mac OS X 10_12_0; rv:52.0) Gecko/20100101 Firefox/52.0"
317.27.160.0 - - [07/Jan 18:10:56:156] "GET /oldlink?item_id=EST-26&JSESSIONID=5055L9FF1ADFF3 HTTP 1.1" 200 1318 "http://buttercup-shopping.com/cart.do?action=changequantity&itemId=EST-18&product_id=EST-3LW-01" "Mozilla/5.0 (Macintosh; Intel Mac OS X 10_12_0; rv:52.0) Gecko/20100101 Firefox/52.0"
128.241.220.82 - - [07/Jan 18:10:56:156] "GET /oldlink?item_id=EST-26&JSESSIONID=5055L9FF1ADFF3 HTTP 1.1" 200 1318 "http://buttercup-shopping.com/cart.do?action=changequantity&itemId=EST-18&product_id=EST-3LW-01" "Mozilla/5.0 (Macintosh; Intel Mac OS X 10_12_0; rv:52.0) Gecko/20100101 Firefox/52.0"
128.241.220.82 - - [07/Jan 18:10:56:156] "GET /oldlink?item_id=EST-26&JSESSIONID=5055L9FF1ADFF3 HTTP 1.1" 200 1318 "http://buttercup-shopping.com/cart.do?action=changequantity&itemId=EST-18&product_id=EST-3LW-01" "Mozilla/5.0 (Macintosh; Intel Mac OS X 10_12_0; rv:52.0) Gecko/20100101 Firefox/52.0"
128.241.220.82 - - [07/Jan 18:10:56:156] "GET /oldlink?item_id=EST-26&JSESSIONID=5055L9FF1ADFF3 HTTP 1.1" 200 1318 "http://buttercup-shopping.com/cart.do?action=changequantity&itemId=EST-18&product_id=EST-3LW-01" "Mozilla/5.0 (Macintosh; Intel Mac OS X 10_12_0; rv:52.0) Gecko/20100101 Firefox/52.0"
128.241.220.82 - - [07/Jan 18:10:56:156] "GET /oldlink?item_id=EST-26&JSESSIONID=5055L9FF1ADFF3 HTTP 1.1" 200 1318 "http://buttercup-shopping.com/cart.do?action=changequantity&itemId=EST-18&product_id=EST-3LW-01" "Mozilla/5.0 (Macintosh; Intel Mac OS X 10_12_0; rv:52.0) Gecko/20100101 Firefox/52.0"
128.241.220.82 - - [07/Jan 18:10:56:156] "GET /oldlink?item_id=EST-26&JSESSIONID=5055L9FF1ADFF3 HTTP 1.1" 200 1318 "http://buttercup-shopping.com/cart.do?action=changequantity&itemId=EST-18&product_id=EST-3LW-01" "Mozilla/5.0 (Macintosh; Intel Mac OS X 10_12_0; rv:52.0) Gecko/20100101 Firefox/52.0"
128.241.220.82 - - [07/Jan 18:10:56:156] "GET /oldlink?item_id=EST-26&JSESSIONID=5055L9FF1ADFF3 HTTP 1.1" 200 1318 "http://buttercup-shopping.com/cart.do?action=changequantity&itemId=EST-18&product_id=EST-3LW-01" "Mozilla/5.0 (Macintosh; Intel Mac OS X 10_12_0; rv:52.0) Gecko/20100101 Firefox/52.0"
128.241.220.82 - - [07/Jan 18:10:56:156] "GET /oldlink?item_id=EST-26&JSESSIONID=5055L9FF1ADFF3 HTTP 1.1" 200 1318 "http://buttercup-shopping.com/cart.do?action=changequantity&itemId=EST-18&product_id=EST-3LW-01" "Mozilla/5.0 (Macintosh; Intel Mac OS X 10_12_0; rv:52.0) Gecko/20100101 Firefox/52.0"

Light Pollution – Not as Simple as It Seems...

NASA does not provide raw light pollution data

- ▶ Downloaded the TIFF files from NASA
- ▶ Used the R programming language to extract the light pollution data from the TIFF images into a 91,000,000 (yes 91 million) line lookup table

4 days later.....

- ▶ KV store exploded, so built accelerated data models so `tstats` can do all the work
- ▶ Additional benefit of the TIFF files
 - Used the `gdal` library to inject the geo mapping data into the TIFF we then reused the TIFF skins as the map tiles using `tilemill` to convert them to the leaflet format Splunk loves

Why make it easy when you can create a custom search command!!

- ▶ Its called “get” and is used as ``| get me=moon`` or ``| get me=weather``
- ▶ Using this command, on dashboard load, a live call to the appropriate API is made, getting the data for the view, depending on location or date

Splunk Demo

Presented by MuS and his Fez

Key Takeaways

From us to you

1. Learned some Astro photography basics like the 500 rule, what you need to take a good dark sky photo, and how it works with the Splunk platform.
2. Splunk is amazing and you can do anything with it – the question is *how* not *if*
3. Get in contact and get the app being demo'd – 9GB too big for Splunkbase directly
4. Check www.darksky.photo for more info

Thank You

Don't forget to **rate this session** in the
.conf2017 mobile app

splunk> .conf2017