

# Splunk Augmented Reality

A Day in the Field with Splunk AR

Devin Bhushan & Glen Wong

October 23, 2019





**Devin Bhushan**

Sr. Software Engineer, AR Lead, Splunk



**Glen Wong**

Sr. Engineering Manager, Mobile, Splunk

# Agenda

- ▶ Introduction
- ▶ Splunk AR 2.0 Demo
- ▶ What's New?
- ▶ AR from Scratch
- ▶ Surprise!

Make Splunk data accessible, usable  
and valuable **without the knowledge of  
SPL and regardless of the user's  
physical location**

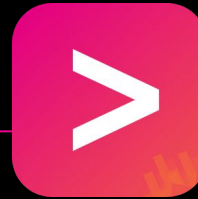
---

Mobile Vision

# Product Portfolio

splunk> CLOUD GATEWAY

splunk> tv



## Splunk Mobile Talks

- ▶ FN1778 – “The Cloud Gateway: A Security Deep Dive and the Future Ahead”  
Thursday, October 24<sup>th</sup> @ 01:00 PM - 01:45 PM
- ▶ FN1749 – “Beyond the Desktop: Making the Most out of Mobile”  
Thursday, October 24<sup>th</sup> @ 02:15 PM - 03:00 PM

Splunk Mobile

Splunk  
AR

# Guiding Principles

Mission: See your Splunk data where it lives



Easy  
onboarding



Phone-driven  
experience



No SPL knowledge  
required



Utilize existing  
Splunk dashboards

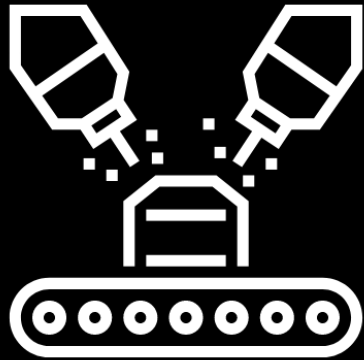


# Demo

# AR Terminology

Terms and concepts used in Splunk AR

## Asset



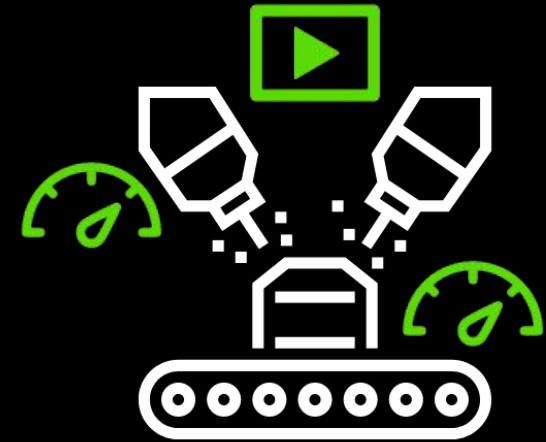
Specific machine

## Group



All machines in a  
specific locale

## Workspace



AR placement template for a  
specific model



# Splunk AR 2.0

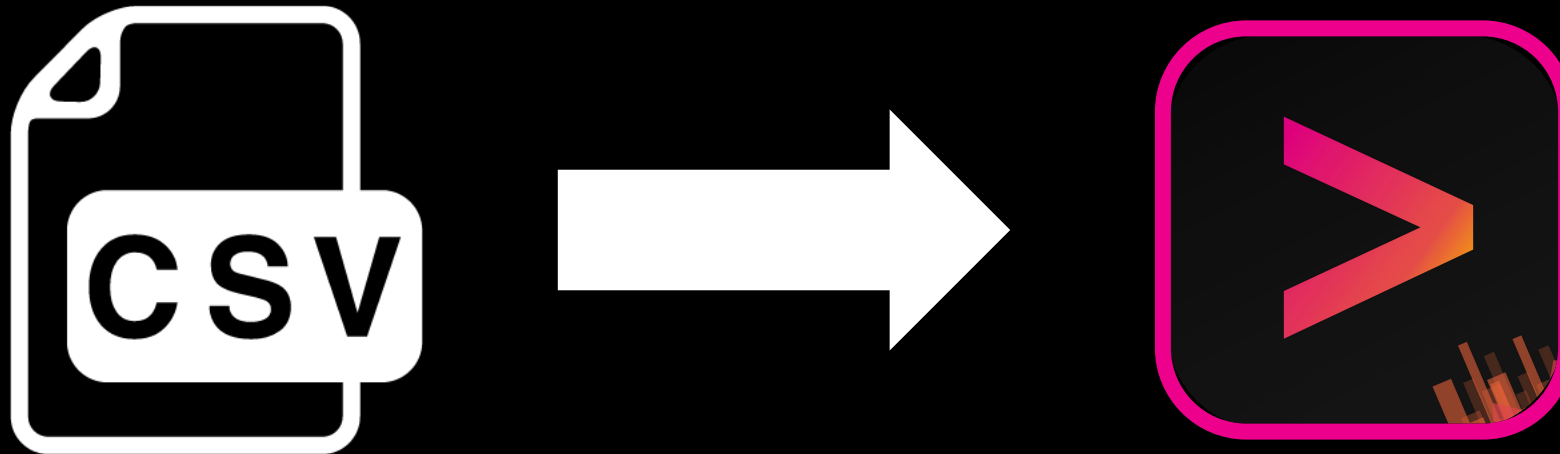
---

Feature Breakdown



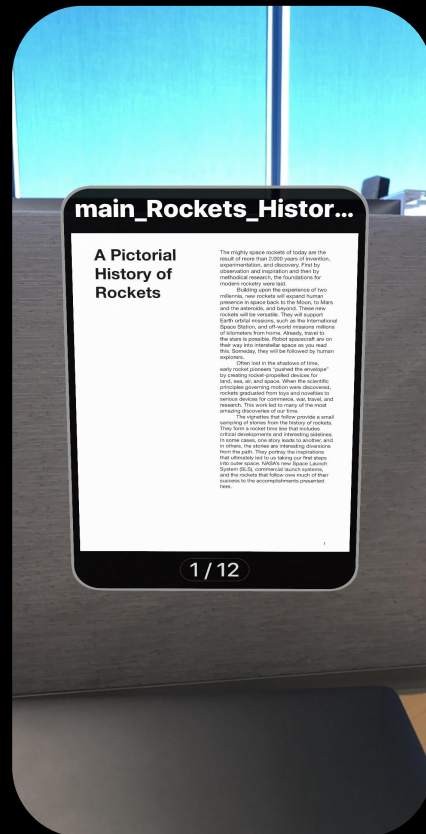
# Bulk Asset Import

Import thousands of assets in just a few clicks



# Content Notes

Add PDFs, videos, images, and audio files to your AR workspace



PDF Note



Video Note

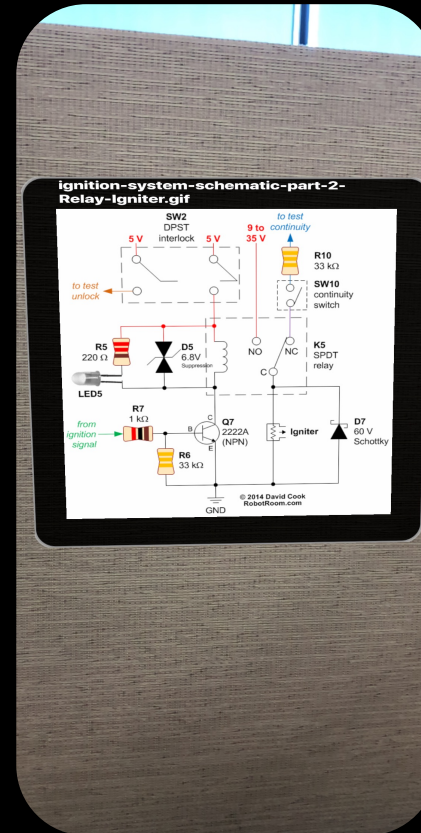


Image Note



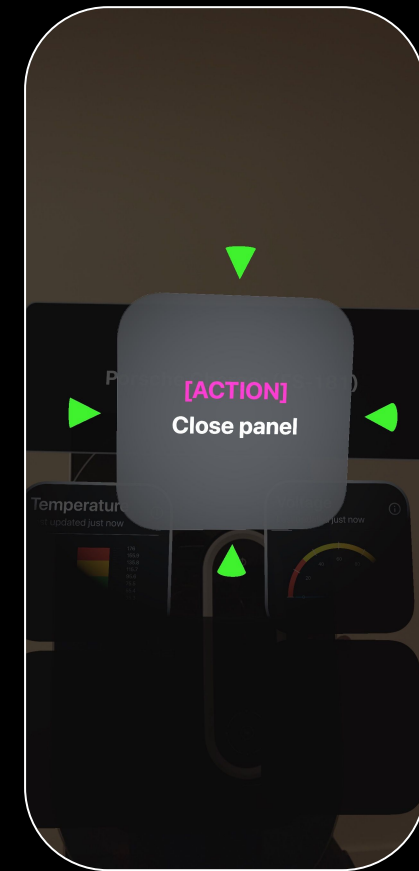
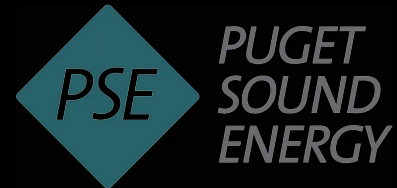
Audio Note

# Workflow Automation **Alpha**

Allow anyone to execute complex processes without training



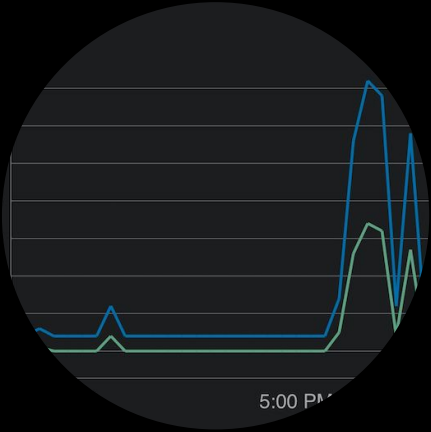
Playbook



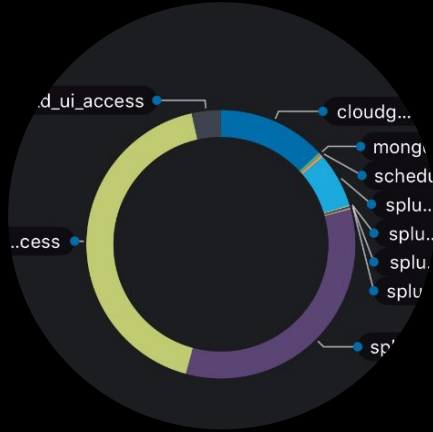
Prompt

# New Chart Types

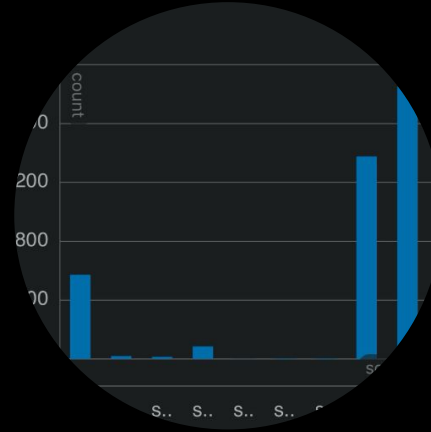
No longer limited to single values and gauges!



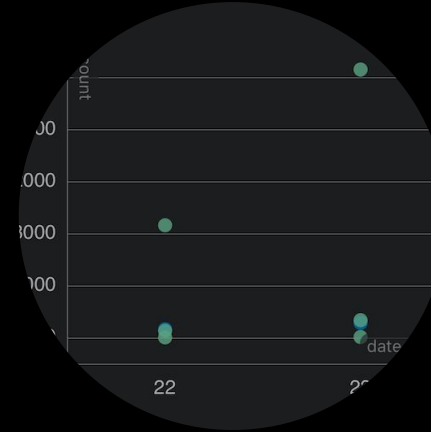
Line Chart



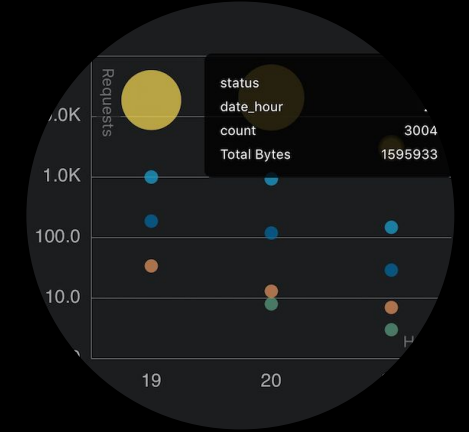
Pie Chart



Column Chart



Scatter Chart



Bubble Chart



# Role Based Access Control (RBAC)

Define a unique experience for each persona

## Splunk AR Personas

**Data Center Tech:** Technician providing on-site support at data center, read-only.

**Field Engineer:** SRE Engineer with access to leave notes for data center technician.

**AR Admin:** Administrator who owns and maintains AR deployment.

Example Roles	Asset Read	Asset Write	Workspace Read	Workspace Write
Data Center Tech	X		X	
Field Engineer	X		X	X
AR Admin	X	X	X	X

# Screen Capture & Record

Share screen and video captures of your AR experience



# How to build from scratch?

---

Build this AR experience in just 5 steps





# Step 1: Register Asset

Register your physical asset with Splunk

## Step 2: Setup AR Workspace

Fine tune position and size of each visualization

## Step 3: Add Notes

Add text, video, audio, image, or PDF notes

## Step 4: Add Playbook

Connect a playbook to your workspace for easy automation

# Step 5: Point and shoot!

Your AR asset is ready to use

# Build your own demo

Build a tiny weather station to try out Splunk AR for yourself!

- ▶ Raspberry Pi Weather Sensor Kit
- ▶ Git repository with resources:  
<https://github.com/kingkupps/SplunkARWeatherDemoToolkit>
  - Sample dashboard
  - Raspberry Pi pre-configured system image
  - Python scripts for HTTPS Event Collector



Raspberry Pi Weather Sensor Kit

<https://amzn.to/2kiF4ss>

# One Last Surprise!

---

.conf19  
splunk>



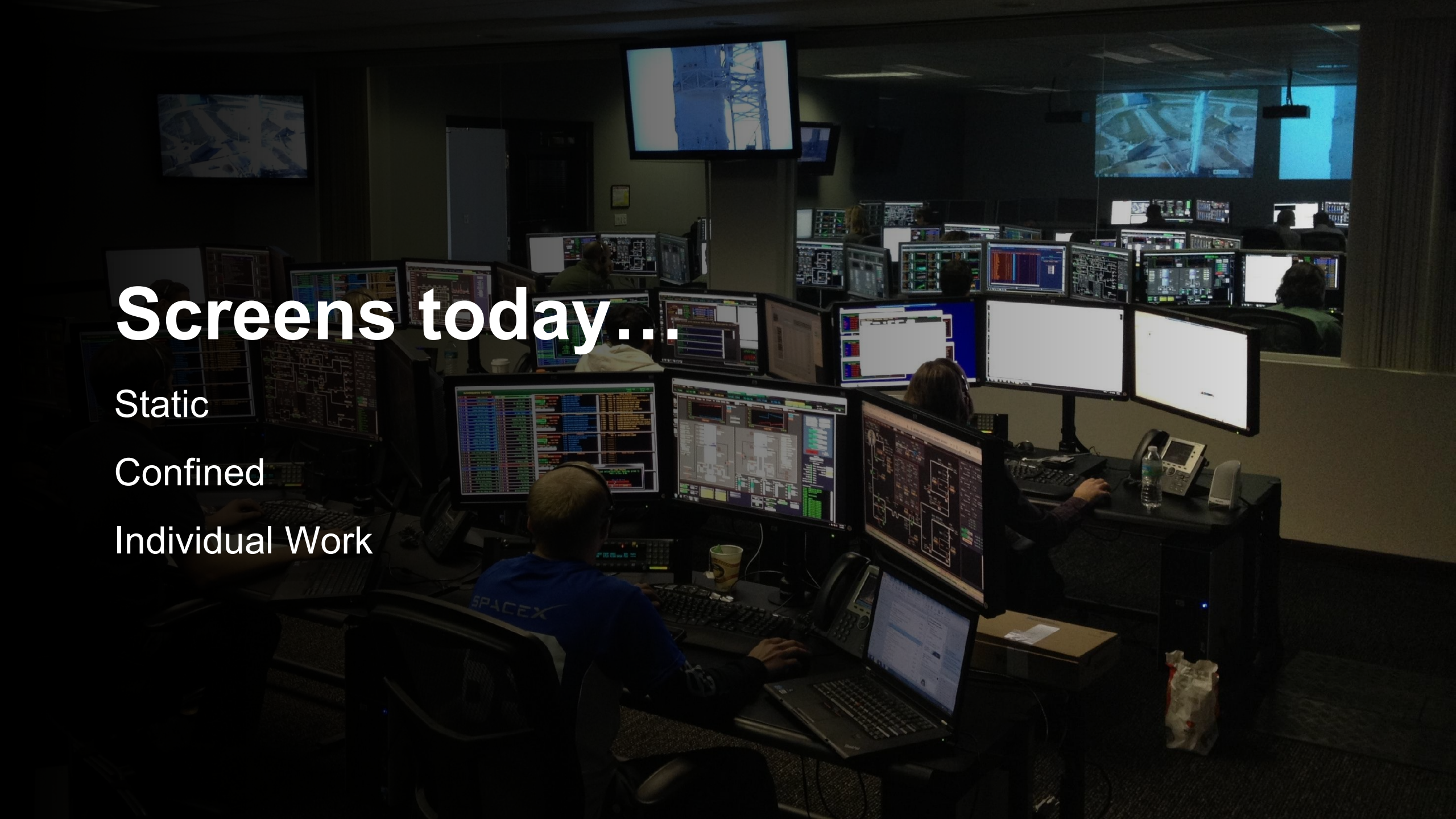


# Screens today...

Static

Confined

Individual Work





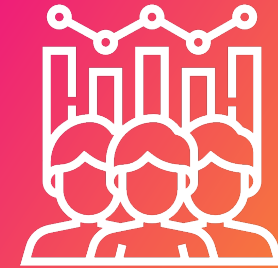
# splunk>vr



**Infinite Canvas**



**Privacy**



**Collaboration**

# Infinite Canvas



- Customizable layouts
- Compare different metrics
- Recognize common patterns



# Privacy

- View sensitive data anywhere
- In office, at home, or on the go
- See everything without showing everyone



# Collaboration

- Collaborate without crowding
- Teammate avatars for realtime discussion
- Share entire investigative experiences



# Demo

# Closing Thoughts

Partner with us and  
help shape the future of  
Splunk AR and VR

We're excited to share these technologies with you and for early adopters to use this product.

Reach out to participate in AR Workflow Automation, VR, and future betas!

Sammy Lee – Sr. Product Manager, Splunk AR  
[sammyl@splunk.com](mailto:sammyl@splunk.com)

Kelly Kong – Product Manager, Splunk VR  
[kkong@splunk.com](mailto:kkong@splunk.com)

# Q&A

---

Devin Bhushan | Sr. Software Engineer, AR Lead, Splunk

Glen Wong | Sr. Engineering Manager, Mobile, Splunk

.conf19

splunk>





**Thank  
You!**