



The New Dashboarding & Content Export Experience in Splunk

A single experience across Enterprise, Splunk Investigate, ITSI and more!

Miranda Luna

Product Management | Splunk

Nachiket Mistry

Engineering | Splunk

splunk>

.conf19



Miranda Luna

Product Management | Splunk



Nachiket Mistry

Engineering | Splunk

Forward-Looking Statements

During the course of this presentation, we may make forward-looking statements regarding future events or the expected performance of the company. We caution you that such statements reflect our current expectations and estimates based on factors currently known to us and that actual events or results could differ materially. For important factors that may cause actual results to differ from those contained in our forward-looking statements, please review our filings with the SEC.

The forward-looking statements made in this presentation are being made as of the time and date of its live presentation. If reviewed after its live presentation, this presentation may not contain current or accurate information. We do not assume any obligation to update any forward-looking statements we may make. In addition, any information about our roadmap outlines our general product direction and is subject to change at any time without notice. It is for informational purposes only and shall not be incorporated into any contract or other commitment. Splunk undertakes no obligation either to develop the features or functionality described or to include any such feature or functionality in a future release.

Splunk, Splunk>, Listen to Your Data, The Engine for Machine Data, Splunk Cloud, Splunk Light and SPL are trademarks and registered trademarks of Splunk Inc. in the United States and other countries. All other brand names, product names, or trademarks belong to their respective owners. © 2019 Splunk Inc. All rights reserved.

Agenda

New Framework

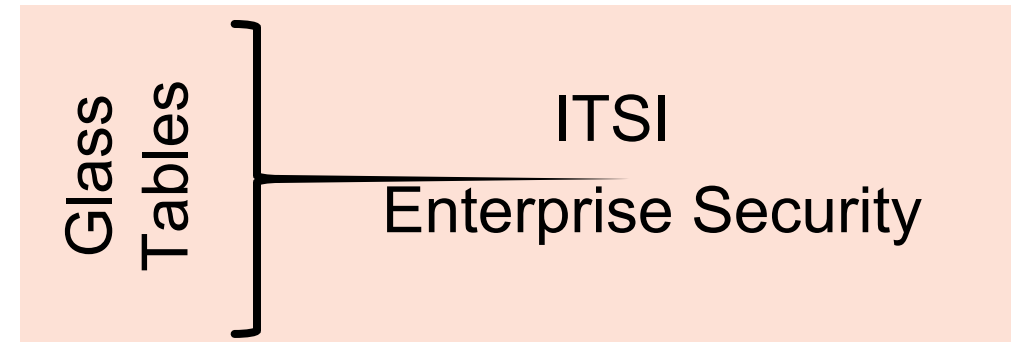
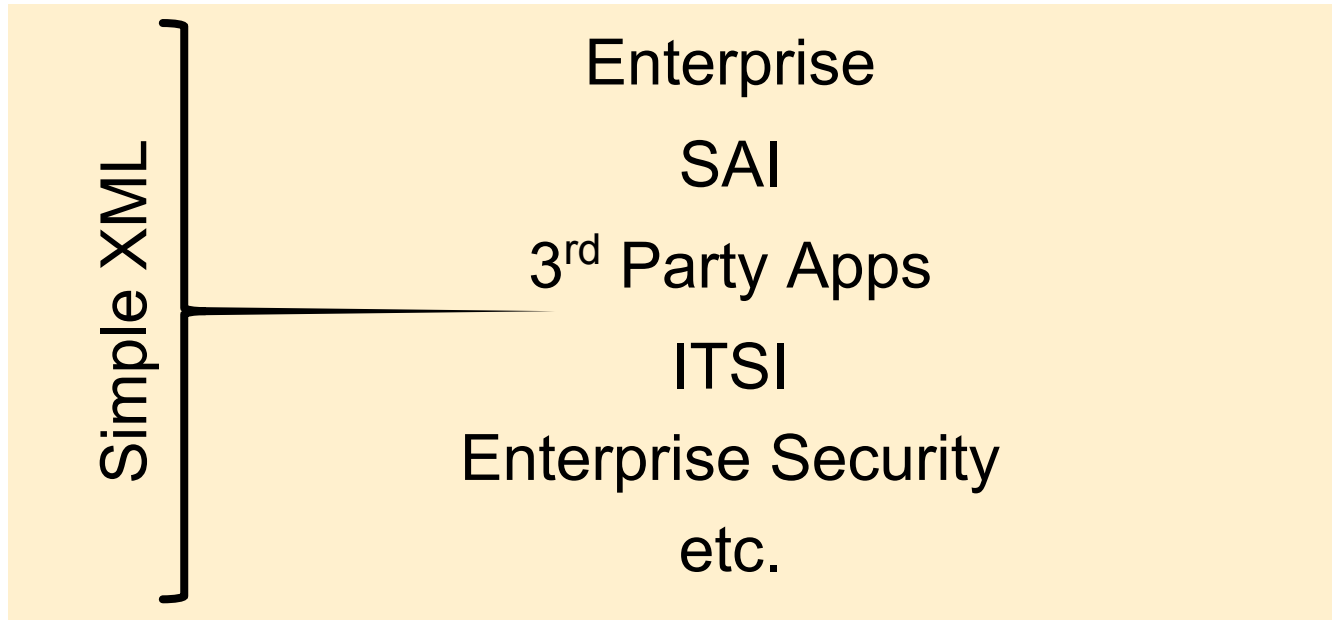
Portfolio overview

Then vs Now

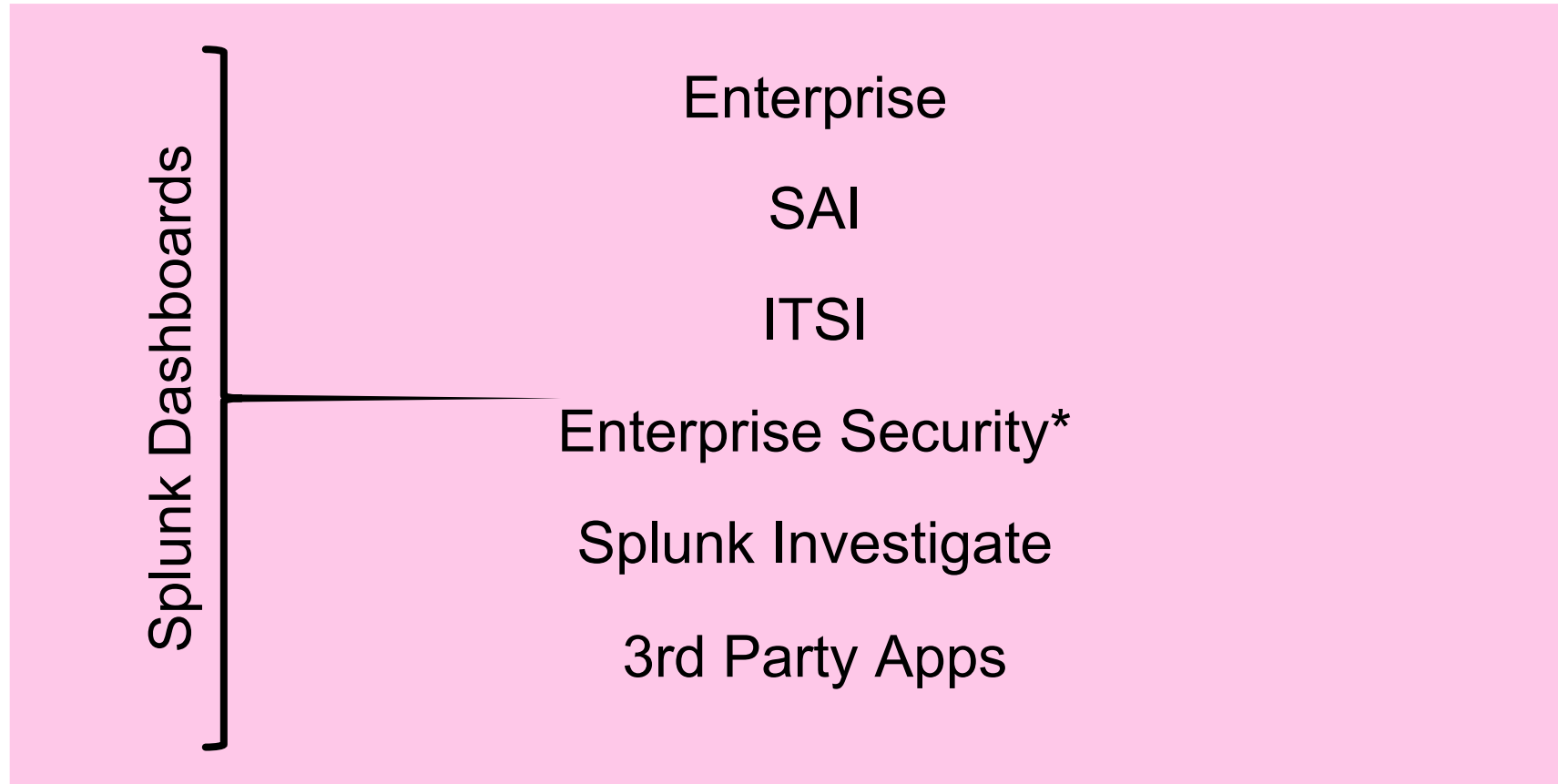
Demo

Resources

Dashboards in the Splunk Portfolio



Dashboards in the Splunk Portfolio



Dashboards & Export in a nutshell before...

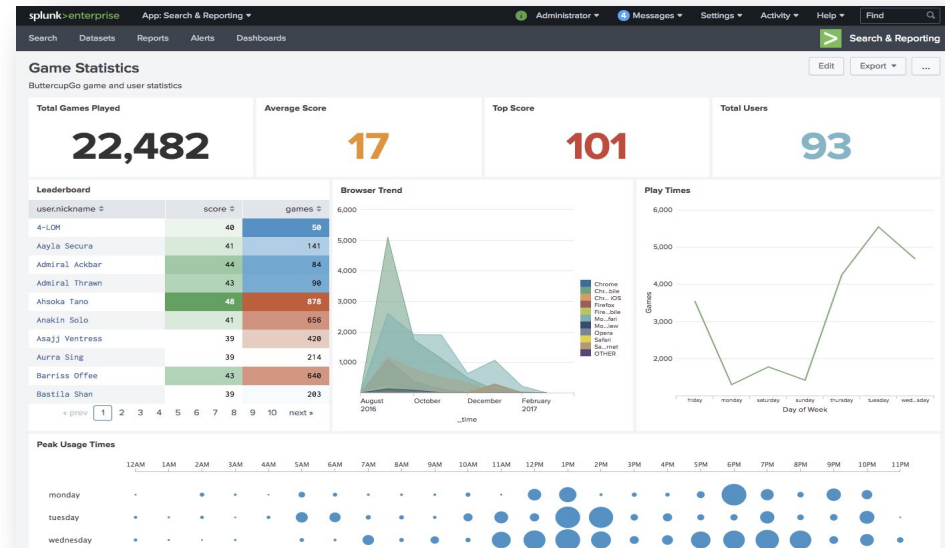
Simple XML

Easy to put a wide range of data visualizations onto the page, but hard to craft a story

Usually only makes sense to the person who built it

Provides extreme flexibility and extensibility, but it takes a developer to build anything truly beautiful (custom JS, CSS)

PDF export loses look/feel of dashboard



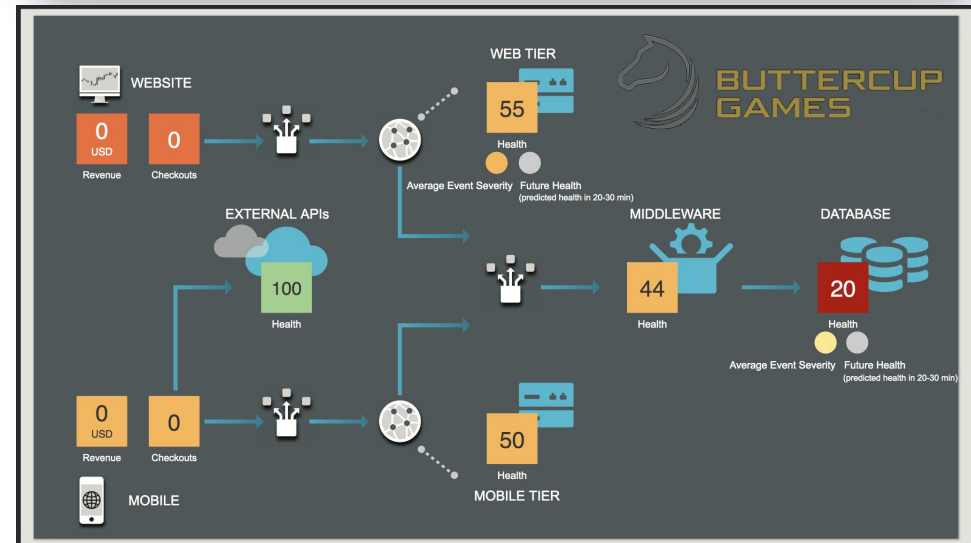
Glass Tables

Easy to craft a story by taking advantage of absolute layout & text, but hard to back that with data.

Usually ends up being a web of drilldowns

Easy for non-technical creators to get started, but is extremely limited in terms of viz & extensibility

No export



Visualizations in Splunk before...

Simple XML

Visualizations convey the straightforward data picture

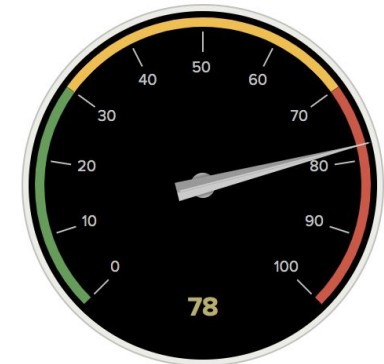
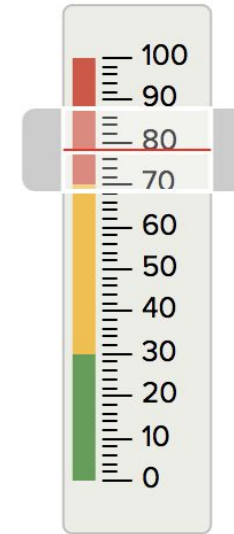
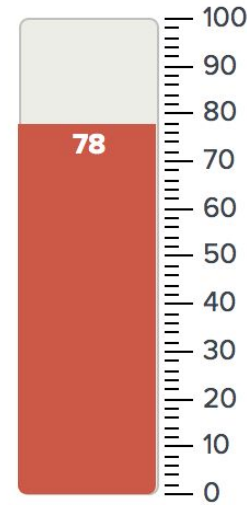
CustomJS required for basic customization – header color in tables, legend interactivity, etc.

Gauges are dated; no icon or image support

Glass Tables

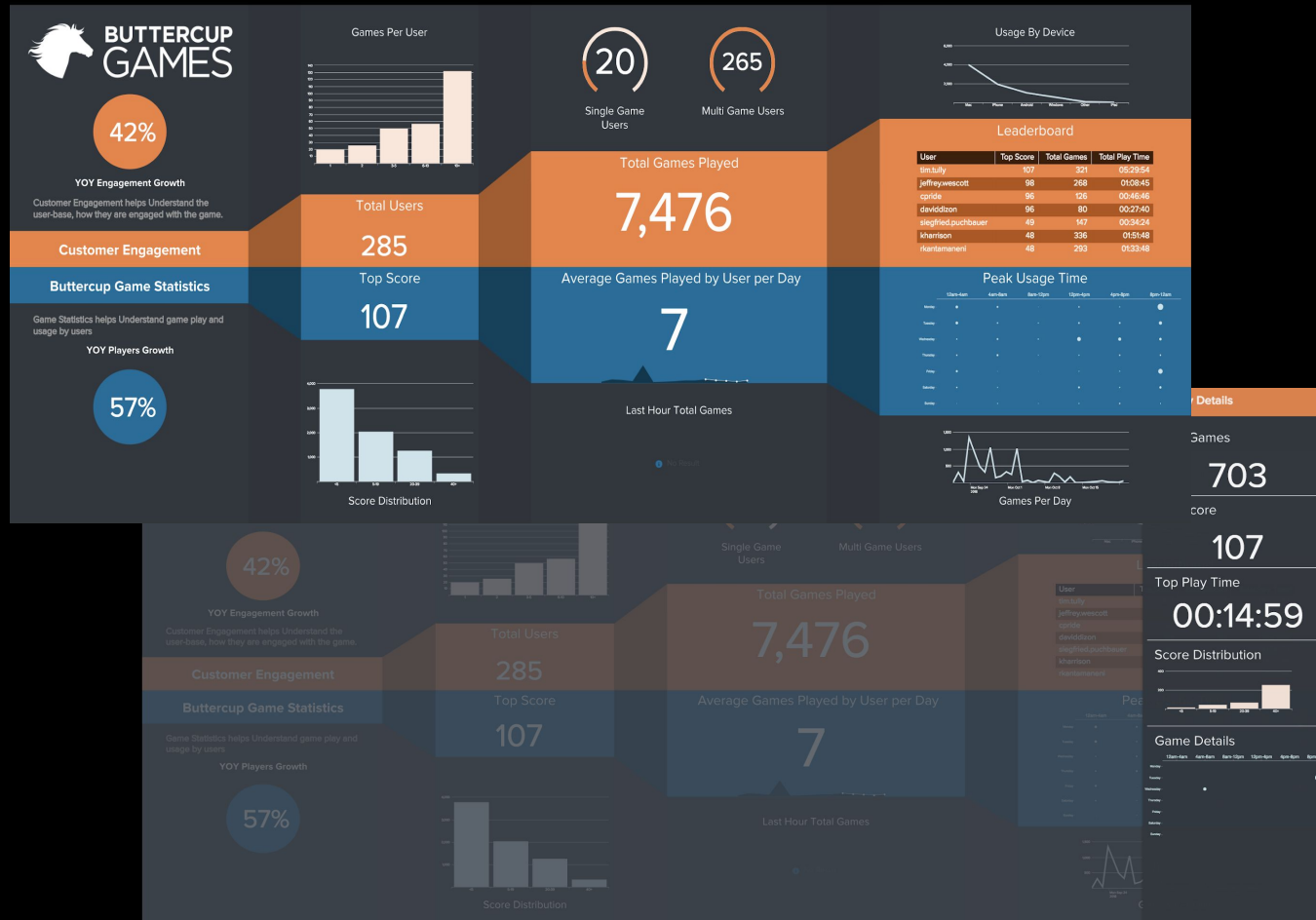
Only Single Value & Single Value Radial supported

Images & Icons available

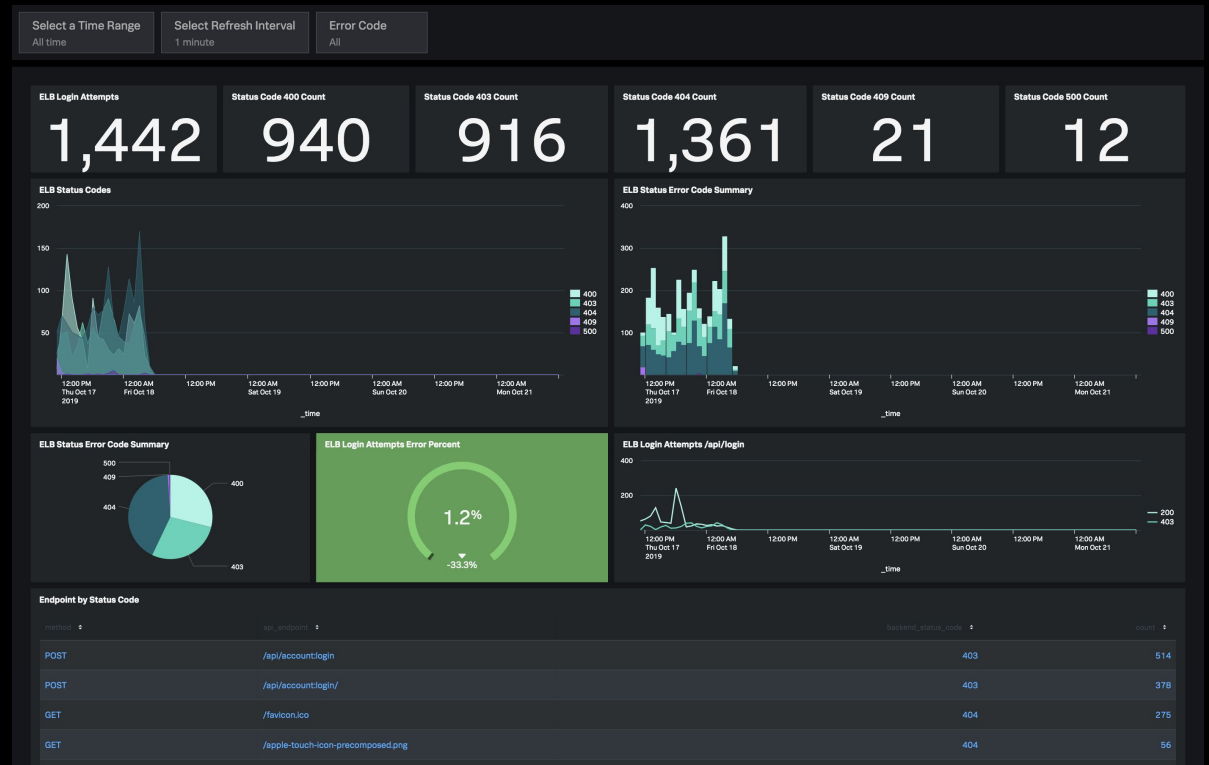
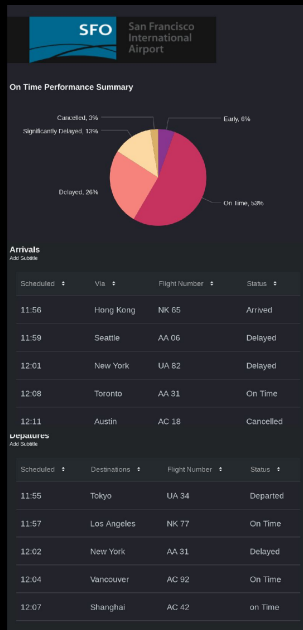
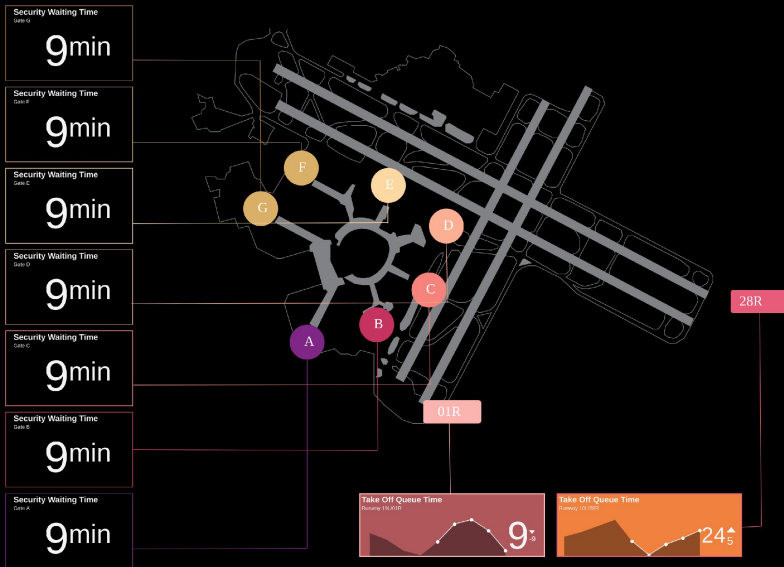


Splunk Dashboards

New editing experience for
Splunk Investigate, Enterprise,
ITSI



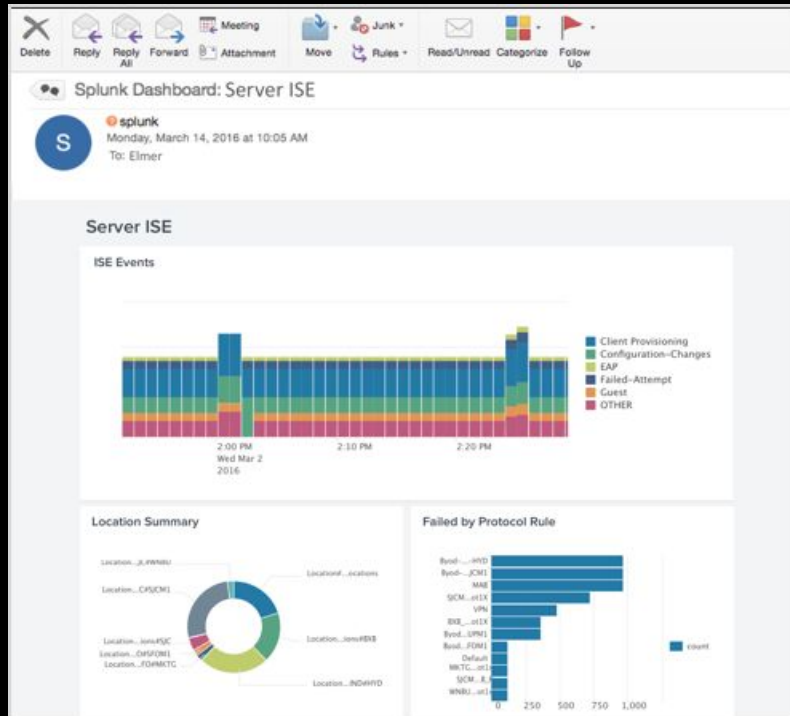
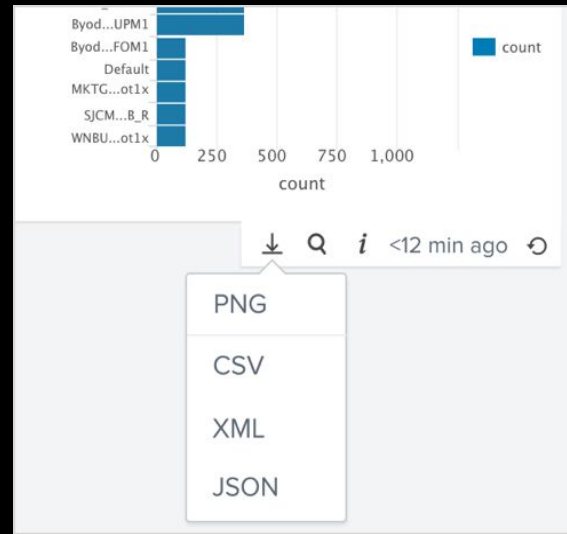
- ▶ Enable more dashboard creators
- ▶ Fast and easy to tell a rich and compelling story with your data
- ▶ Accelerate insight proliferation



Content Export

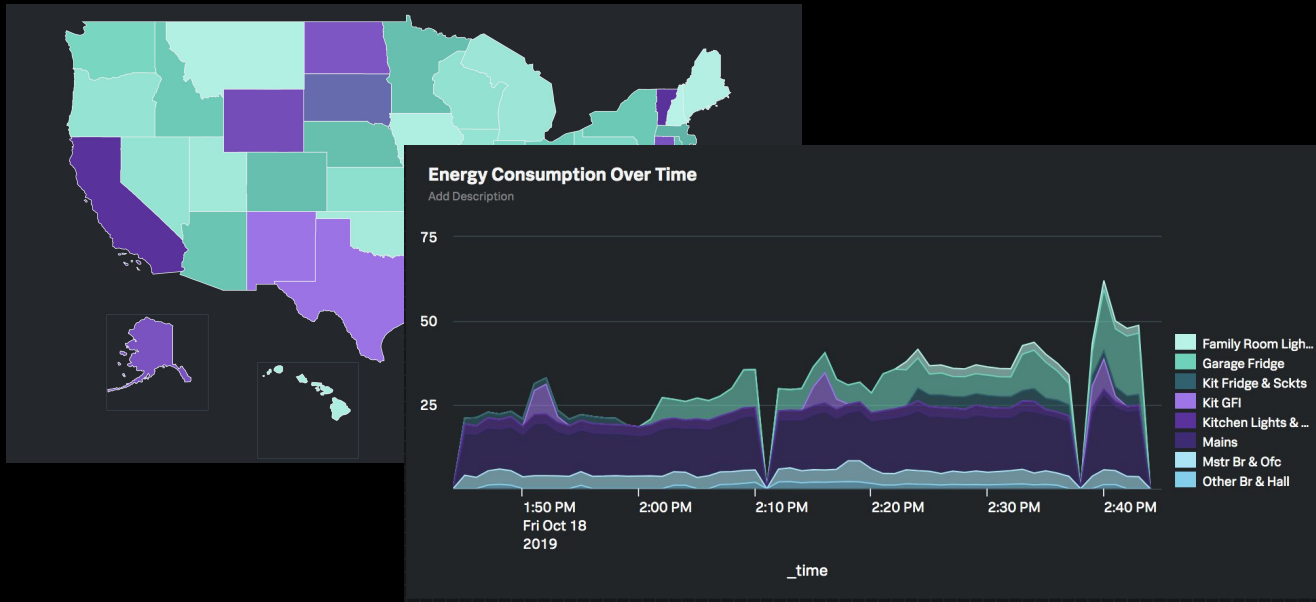
Coming online soon

- ▶ Support for exporting dashboards to PNG, individual panels to PNG and sending dashboards as inline emails.



Visualizations

Coming online soon



▶ Theming and refreshed look/feel

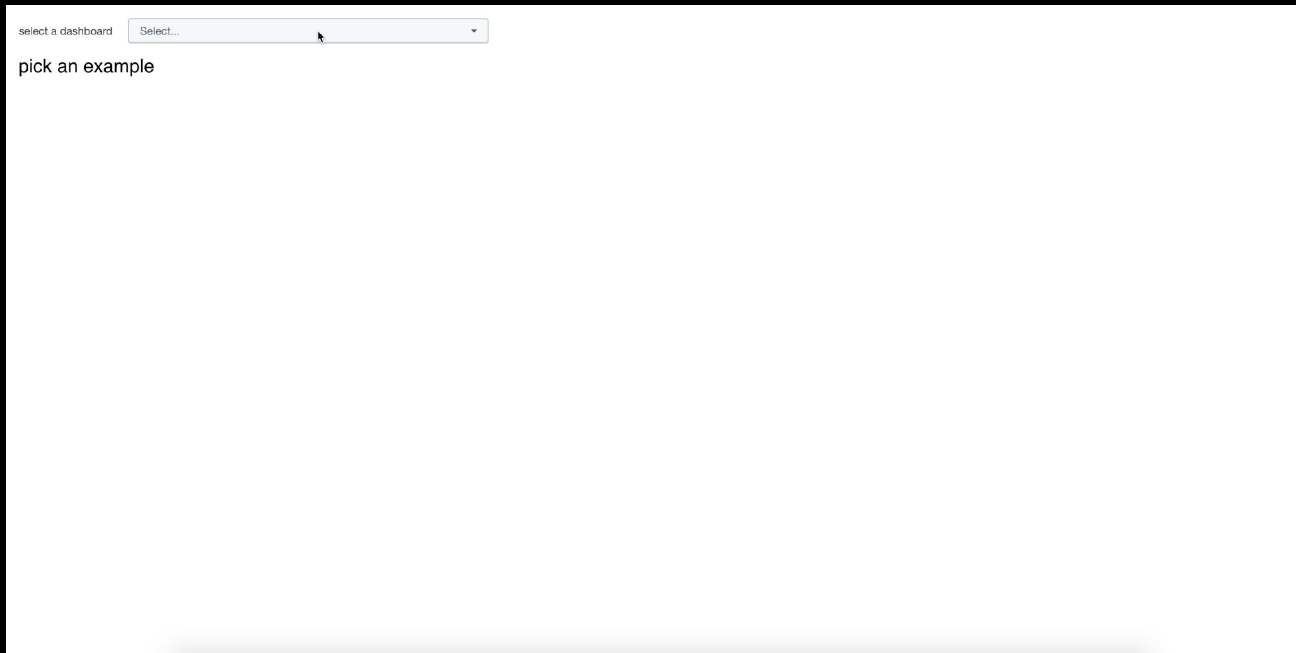
▶ Bringing custom viz into core Splunk viz offering

▶ Progress towards easy on interactivity and inputs/tokens



Splunk Dashboards

New developer framework for
SCS & Enterprise



- ▶ Embeddable framework to host & run anywhere
- ▶ Build/test/deploy with your preferred tooling
- ▶ Extensible to wider ecosystem
- ▶ Well-defined API contracts



Demo

Resources

Docs

Ent: <https://docs.splunk.com/Documentation/DashApp/0.1.0/DashApp/IntroApp>

ITSI: <https://docs.splunk.com/Documentation/ITSI/4.3.0/User/BetaFramework>

Splunk Investigate: <https://docs.splunk.com/Documentation/SplunkInvestigate/Current/Use/DashOverview>

Developer: <https://developer.splunk.com/scs/docs/dashviz>

NPM

<https://www.npmjs.com/package/@splunk/dashboard-core>

GitHub with Examples

SCS/Investigate Examples - <https://github.com/splunk/conf2019-dashboard-scs>

Enterprise Examples - <https://github.com/splunk/dashboard-conf19-examples>

Dashboard Sessions

FN1815 (Tues 1230-115) - The New Dashboarding & Content Export Experience in Splunk: A single experience across Enterprise, SCP, ITSI and more!

DEV 2165 (Tues 415-5) –Deep Dive on The New Dashboarding & Content Export Experience

DEV1141 (Weds 215-3) – Building Applications with Splunk UI and Splunk React Visualizations

FN1933 (Weds 100-145) – Unleash your Inner Picasso – Splunk’s New Dashboard Framework

FN1735 (Weds 215-3) – What’s next for Geo in Splunk

DEV2178 (Thurs 1030-115) – Build your own custom data visualization on dashboard

**We want to
hear from you!**

Reaching the team

Dashboard Usage & Feedback Survey

Visualizations – bit.ly/scs-visualizations

Dashboards – bit.ly/scs-dashboards

Inputs – bit.ly/scs-inputs

Booths

Foundations & Platform > Splunk Enterprise

Developer (Dev Zone) > Dashboards

Developer (Dev Zone) > Visualizations Library

Email

Core Dashboard & Splunk Investigate -

dashboards@splunk.com

Core Viz & Splunk Investigate - visualizations@splunk.com

ITSI Experience – itsi-beta-gt-feedback@splunk.com

Enterprise Experience – dashboardsbeta@splunk.com

Q&A

.conf19
splunk>





**Thank
You!**

Go to the .conf19 mobile app to

**RATE THIS
SESSION**