

Maximizing permissioned blockchain throughput using Samsung SDS Accelerator and Splunk MLTK

Kapi Attawar and Jeff Wu
Samsung SDS + Splunk

splunk>

.conf19



Kapi Attawar

Chief Revenue Officer | Samsung SDS



Jeff Wu

Senior Product Manager | Splunk

Forward-Looking Statements

During the course of this presentation, we may make forward-looking statements regarding future events or the expected performance of the company. We caution you that such statements reflect our current expectations and estimates based on factors currently known to us and that actual events or results could differ materially. For important factors that may cause actual results to differ from those contained in our forward-looking statements, please review our filings with the SEC.

The forward-looking statements made in this presentation are being made as of the time and date of its live presentation. If reviewed after its live presentation, this presentation may not contain current or accurate information. We do not assume any obligation to update any forward-looking statements we may make. In addition, any information about our roadmap outlines our general product direction and is subject to change at any time without notice. It is for informational purposes only and shall not be incorporated into any contract or other commitment. Splunk undertakes no obligation either to develop the features or functionality described or to include any such feature or functionality in a future release.

Splunk, Splunk>, Listen to Your Data, The Engine for Machine Data, Splunk Cloud, Splunk Light and SPL are trademarks and registered trademarks of Splunk Inc. in the United States and other countries. All other brand names, product names, or trademarks belong to their respective owners. © 2019 Splunk Inc. All rights reserved.

Nexledger Accelerator

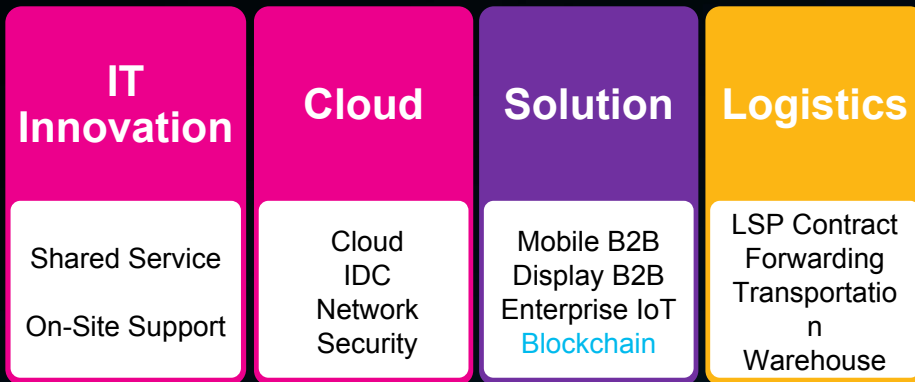
Samsung SDS



Samsung SDS

4 Major Business Units at 12 Satellite Offices in North America

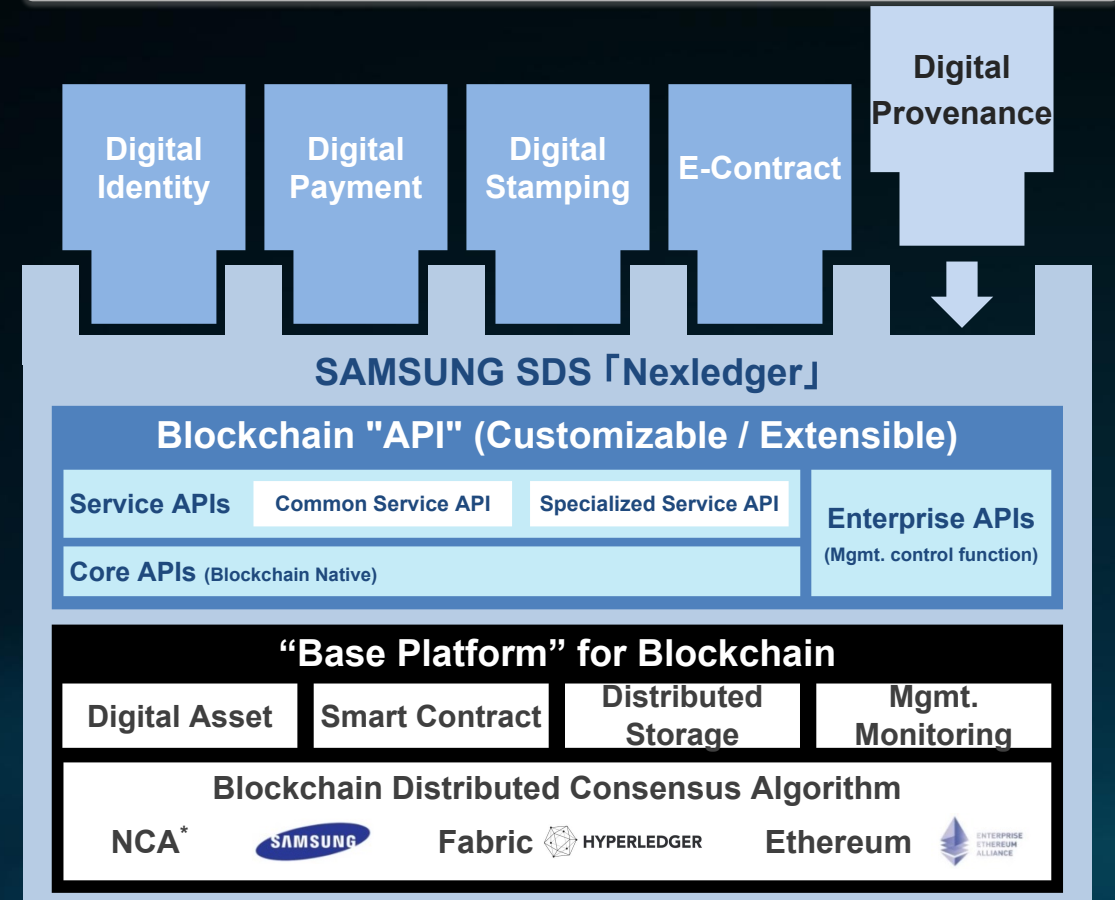
Samsung SDSA



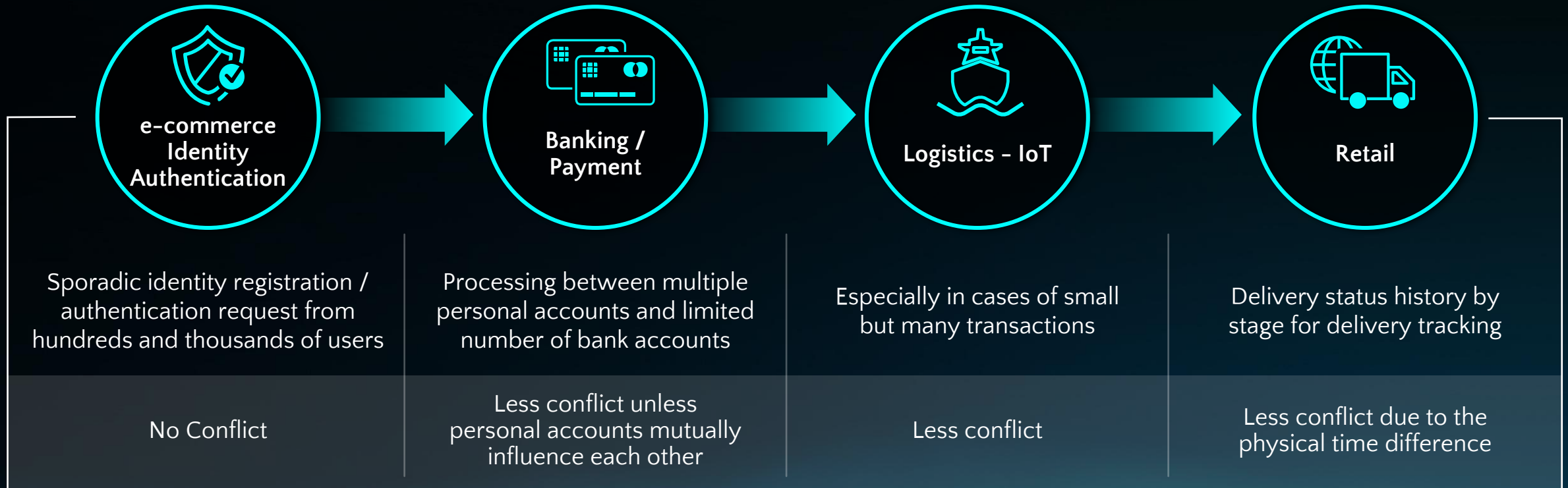
SDSRA (R&D)

G & A (New Jersey / San Jose)

Nexledger Dapp Delivery



Use Cases

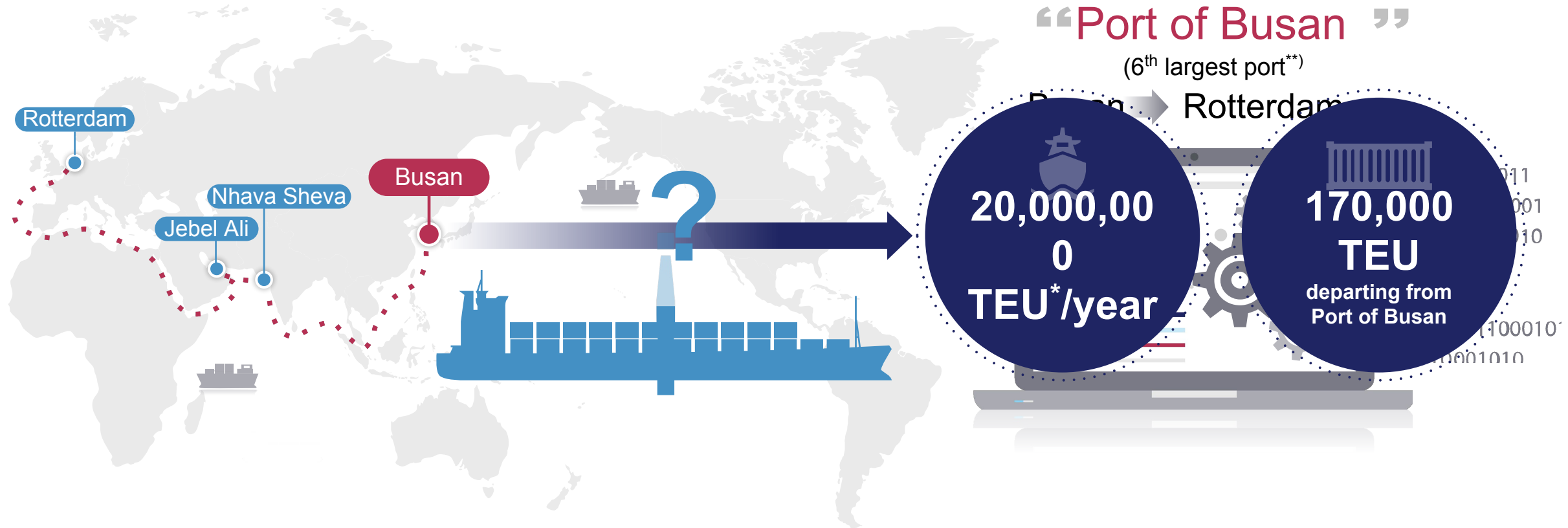


“

Performance is the core competitiveness

”

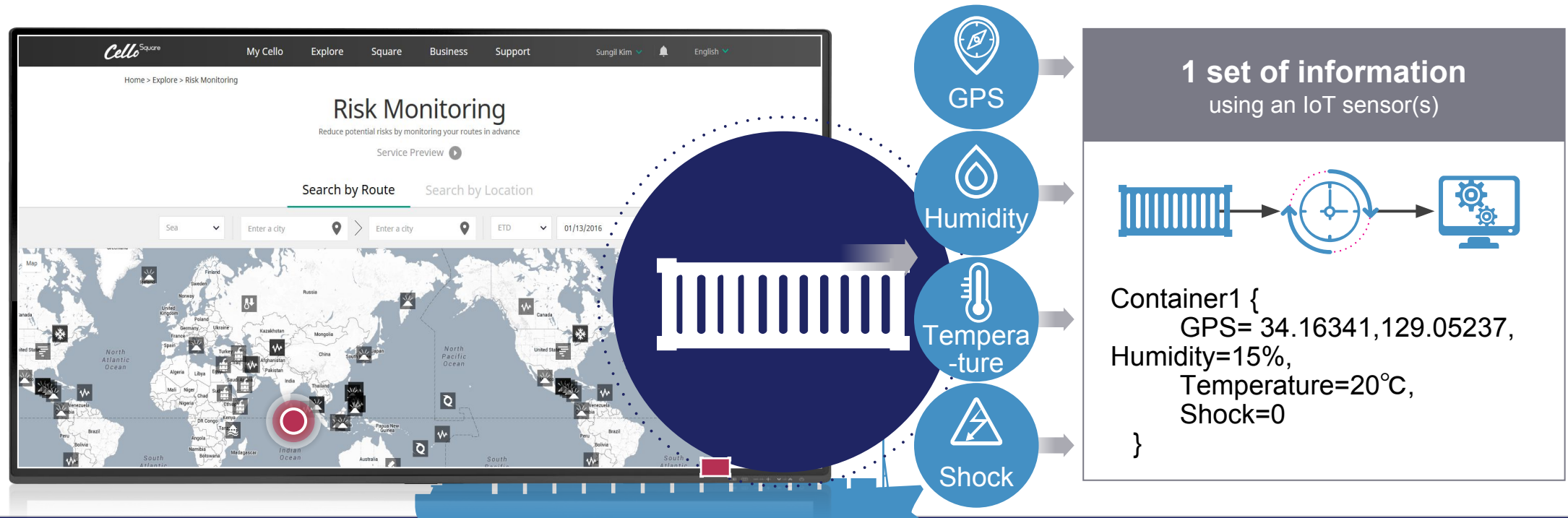
Example – Maritime Logistics



*TEU : the standard unit of measurement, equivalent to a container of a length of 20 feet

** Ministry of Oceans and Fisheries, South Korea

Example – Maritime Logistics



If 1 transaction from 170,000 TEU every 15 seconds

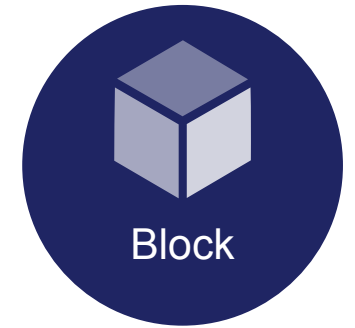
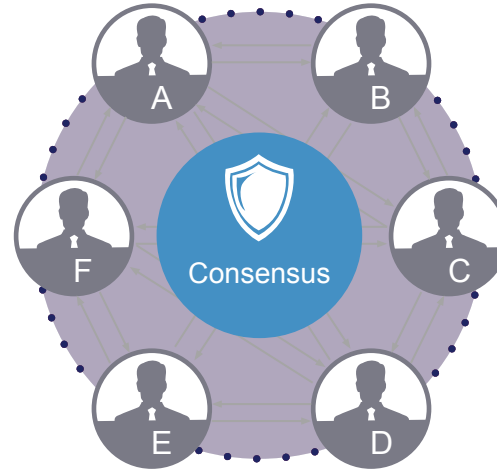
11,300 TPS Throughput is required

This is only 3% of the total number of containers globally

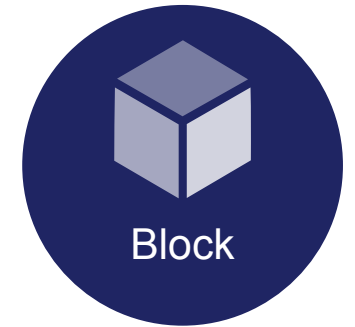
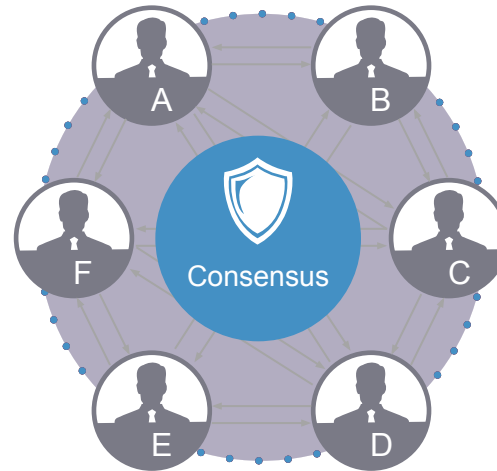
Visualization



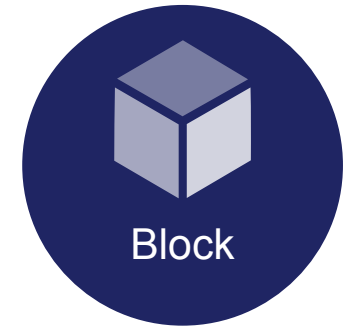
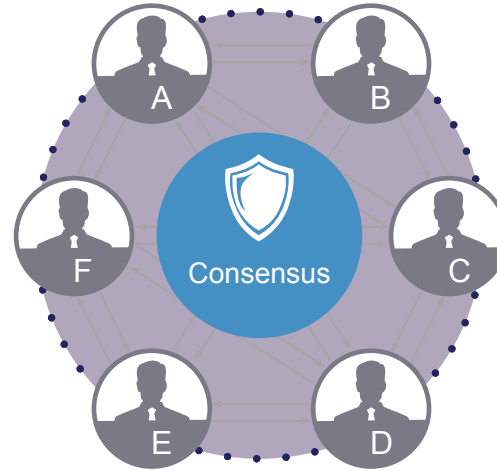
Fabric with Accelerator



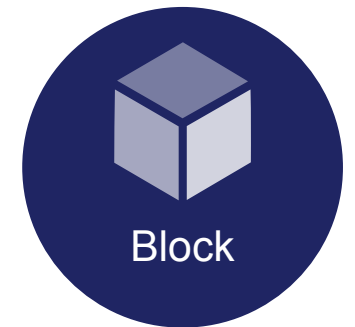
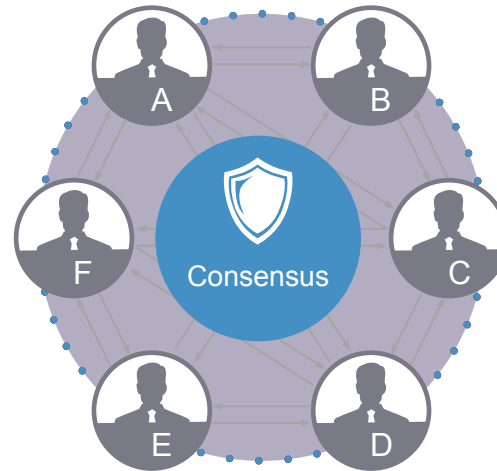
Fabric



Fabric with Accelerator

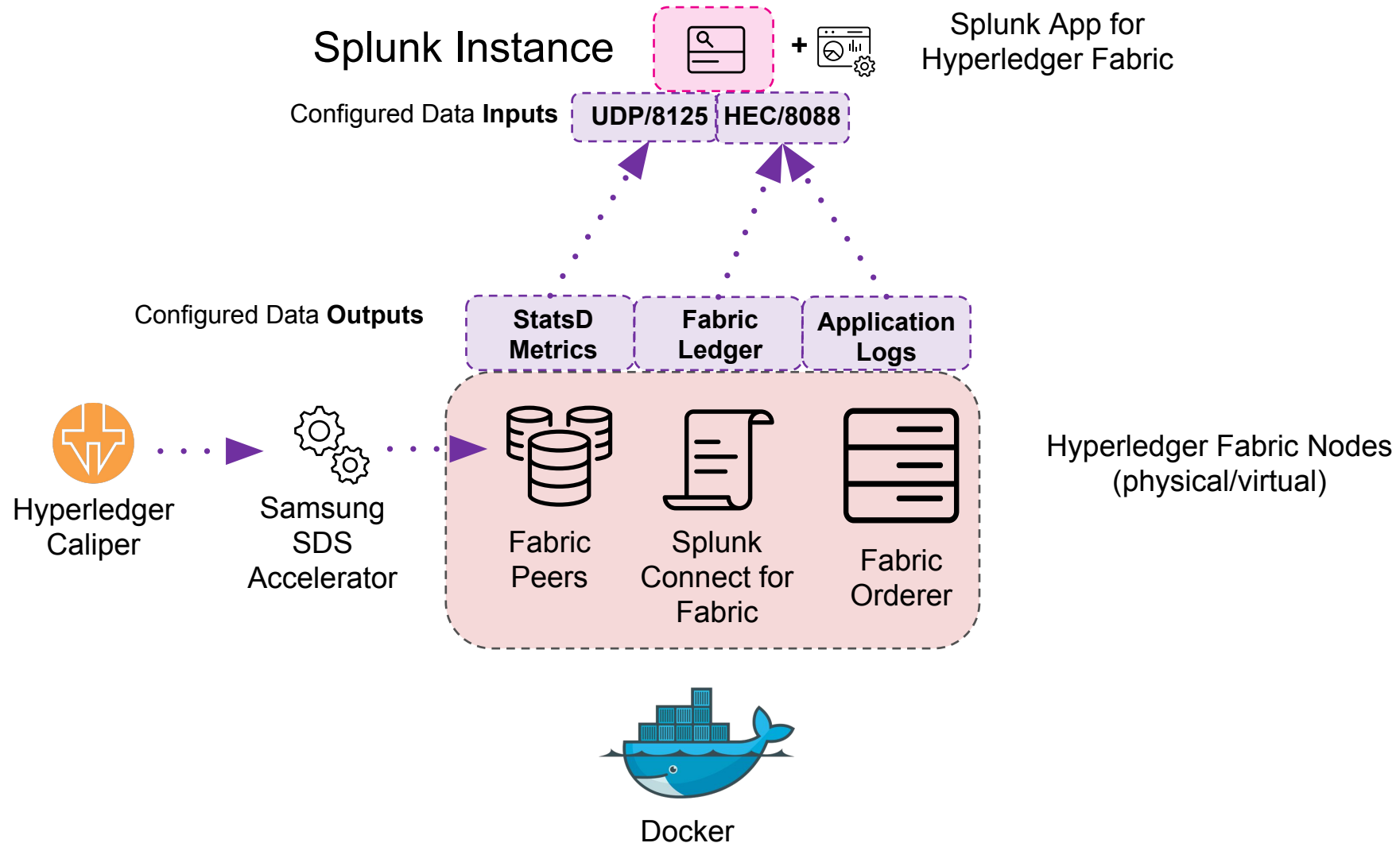


Fabric



Architecture

Hyperledger Fabric Environment





Demo



**Thank
You!**

Go to the .conf19 mobile app to

**RATE THIS
SESSION**