

Splunk Infrastructure Investigation & Monitoring

Stop...Investigate & Listen: Splunk is
Back with a Brand-New Edition!

Zongjie Diao (Z)

zjd@splunk.com

Kara Gillis

kgillis@splunk.com



Forward-Looking Statements



During the course of this presentation, we may make forward-looking statements regarding future events or plans of the company. We caution you that such statements reflect our current expectations and estimates based on factors currently known to us and that actual events or results may differ materially. The forward-looking statements made in the this presentation are being made as of the time and date of its live presentation. If reviewed after its live presentation, it may not contain current or accurate information. We do not assume any obligation to update any forward-looking statements made herein.

In addition, any information about our roadmap outlines our general product direction and is subject to change at any time without notice. It is for informational purposes only, and shall not be incorporated into any contract or other commitment. Splunk undertakes no obligation either to develop the features or functionalities described or to include any such feature or functionality in a future release.

Splunk, Splunk>, Data-to-Everything, D2E and Turn Data Into Doing are trademarks and registered trademarks of Splunk Inc. in the United States and other countries. All other brand names, product names or trademarks belong to their respective owners. © 2020 Splunk Inc. All rights reserved

Zongjie Diao (Z)

Product Management Director | Splunk




Kara Gillis

Product Management Director | Splunk



New Names, Same Great Technologies

VictorOps  is now **Splunk On-Call**

SignalFx
Infrastructure Monitoring  is now **Splunk Infrastructure Monitoring**

SignalFx
Microservices APM  is now **Splunk APM**

Agenda

Today's Topics

Traditional Monitoring Challenges

Splunk Infrastructure Investigation and Monitoring

Top use cases and solution

Demos



83% of organizations are
looking for new monitoring
approaches to handle cloud
complexity

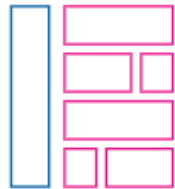
only **11%** are satisfied with
existing monitoring tools

Source: 451 Research

Different Needs in Every Stage

Different architectures and operating models require different methods of monitoring

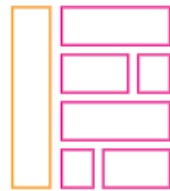
Retain & Optimize



Tightly Coupled Apps,
Slow Deployment Cycles



Lift & Shift



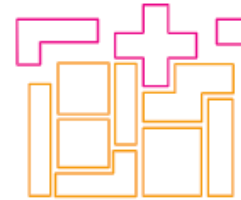
Primarily using
Cloud IaaS



Re-Factor



Cloud Managed e.g. RDS,
DynamoDB, SaaS



More Modular, but
Dependent App Components



Re-Architect / Cloud-Native

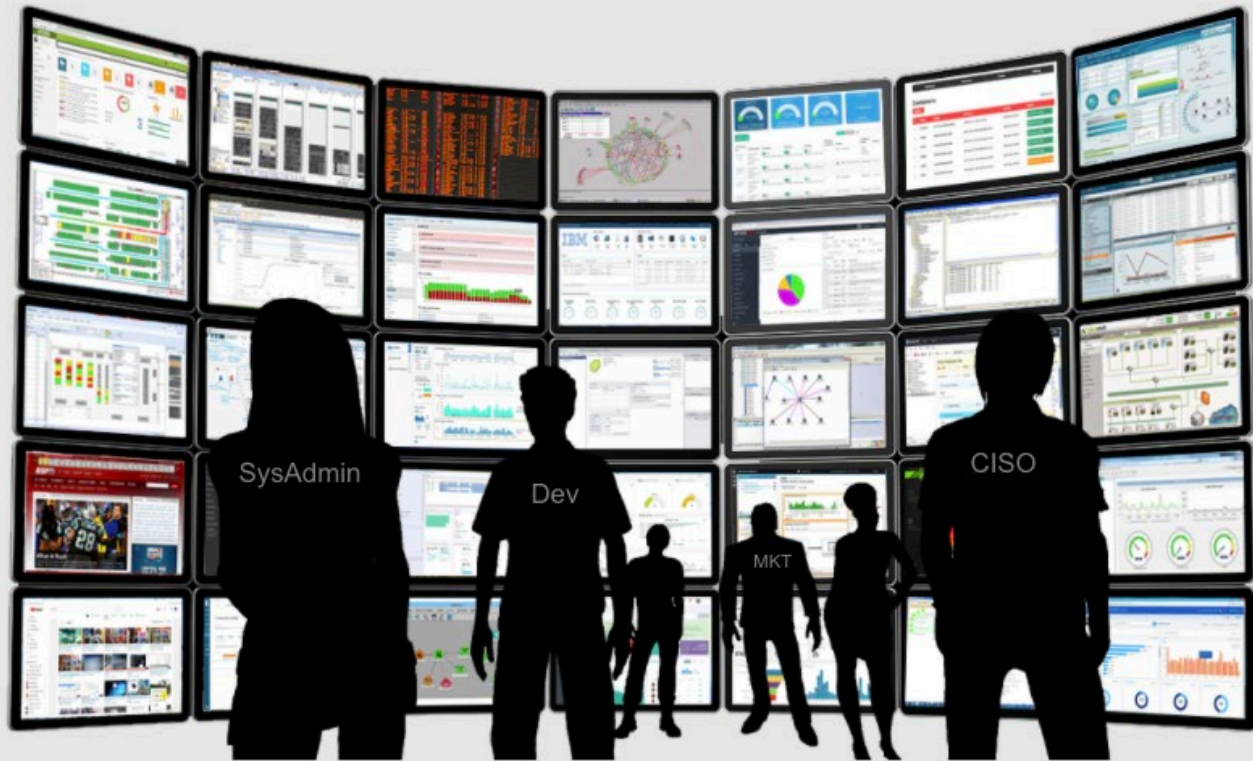


Cloud First Architecture



Loosely Coupled Microservices,
and Serverless Functions





Traditional Monitoring Challenges

- Lack of visibility
- Too many tools
- Siloed views of data
- Unable to scale
- Long times to resolve

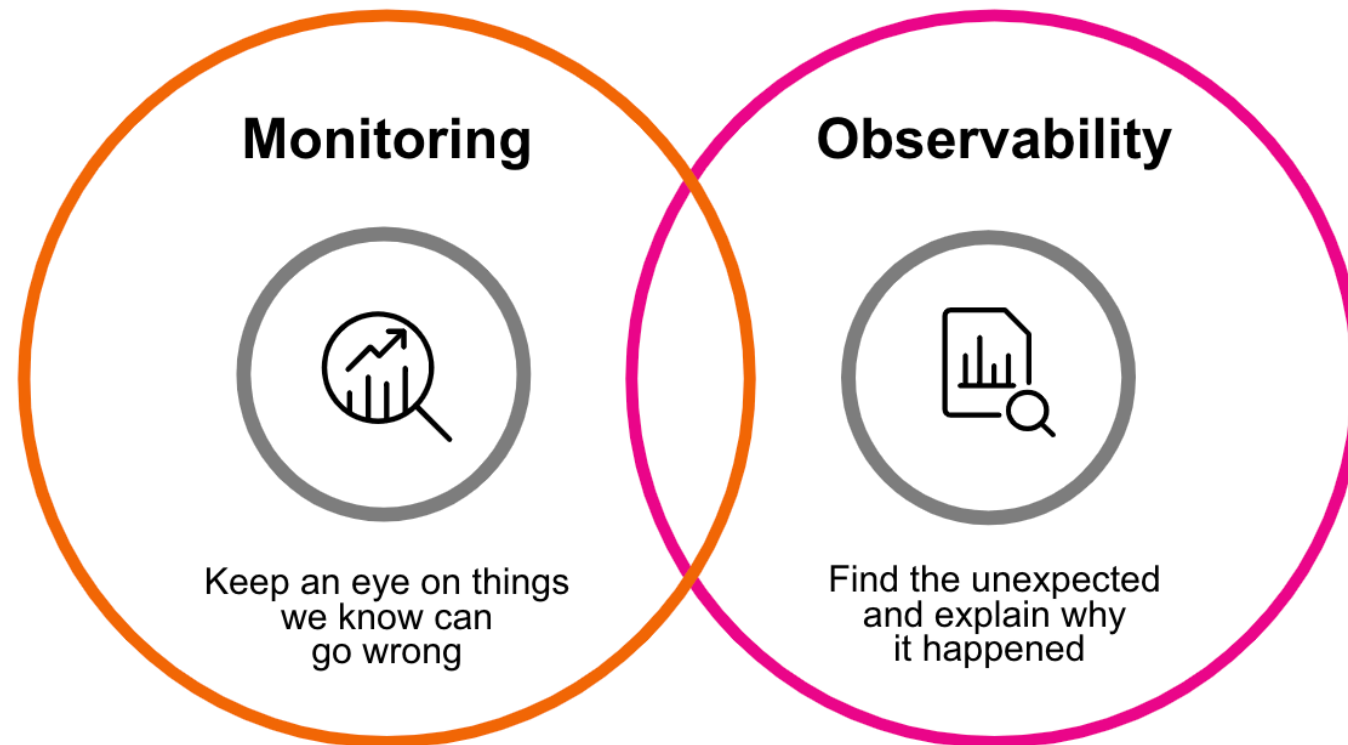
The Struggle is Real

Cloud migration, app modernization and DevOps are hard with traditional monitoring



Monitoring Must Evolve into Observability

Observability helps detect, investigate and resolve the unknown unknowns – FAST



.conf20

splunk>

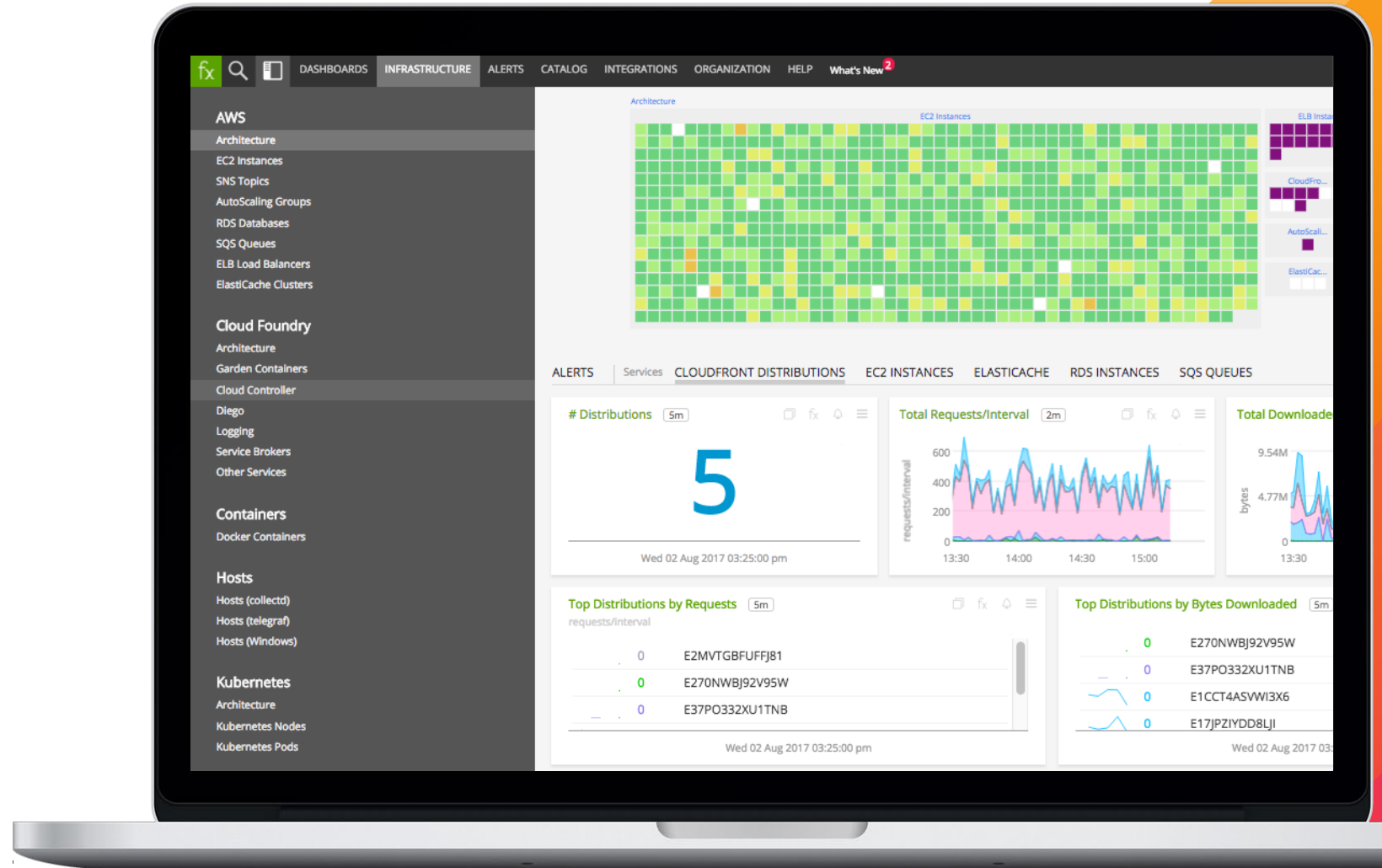
Splunk Infrastructure Investigation & Monitoring



The industry's most powerful
analytics-driven multicloud
monitoring and investigation
solution for **all environments**

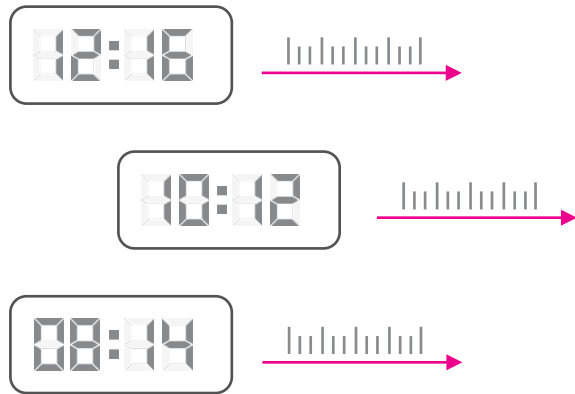
Splunk Infrastructure Monitoring

- Previous SignalFx Infrastructure Monitoring
- Real-time, on-prem & hybrid/multicloud metrics-based monitoring
- Kubernetes & serverless monitoring
- Pre-built dashboards & hundreds of integrations
- Automatic service discovery
- Instant, analytics-driven alerting
- Slice/dice and search on data seamlessly
- Custom & high-resolution metrics

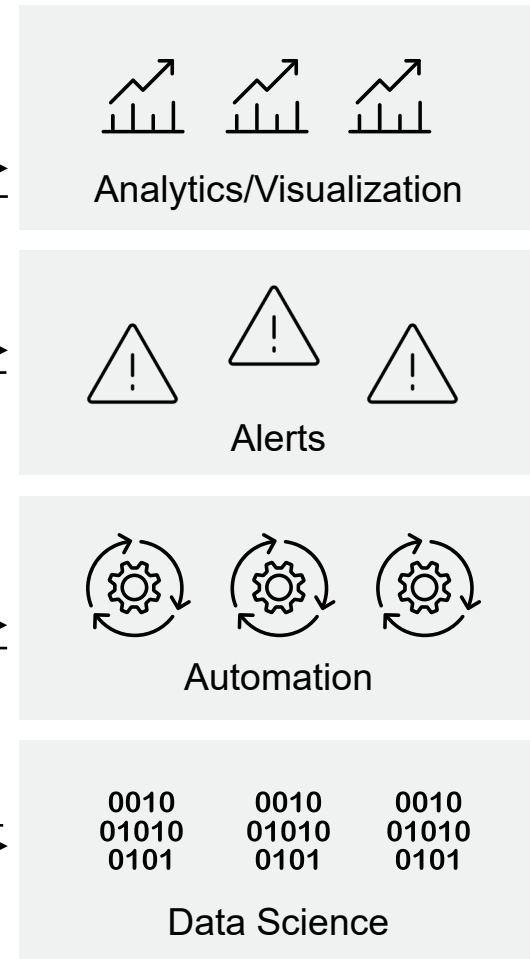


Traditional Batch Metrics Architecture is Based on Slow Batch Querying

Metrics



Time Series Database

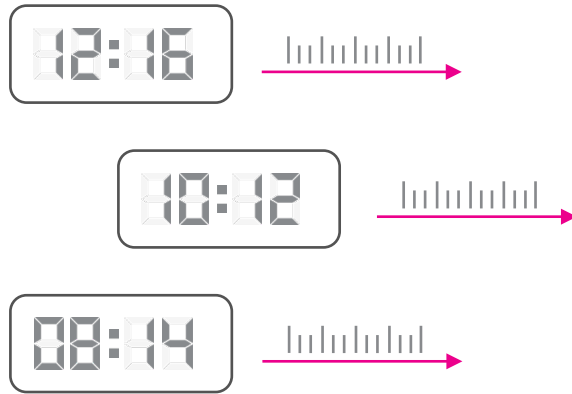


Separate Systems

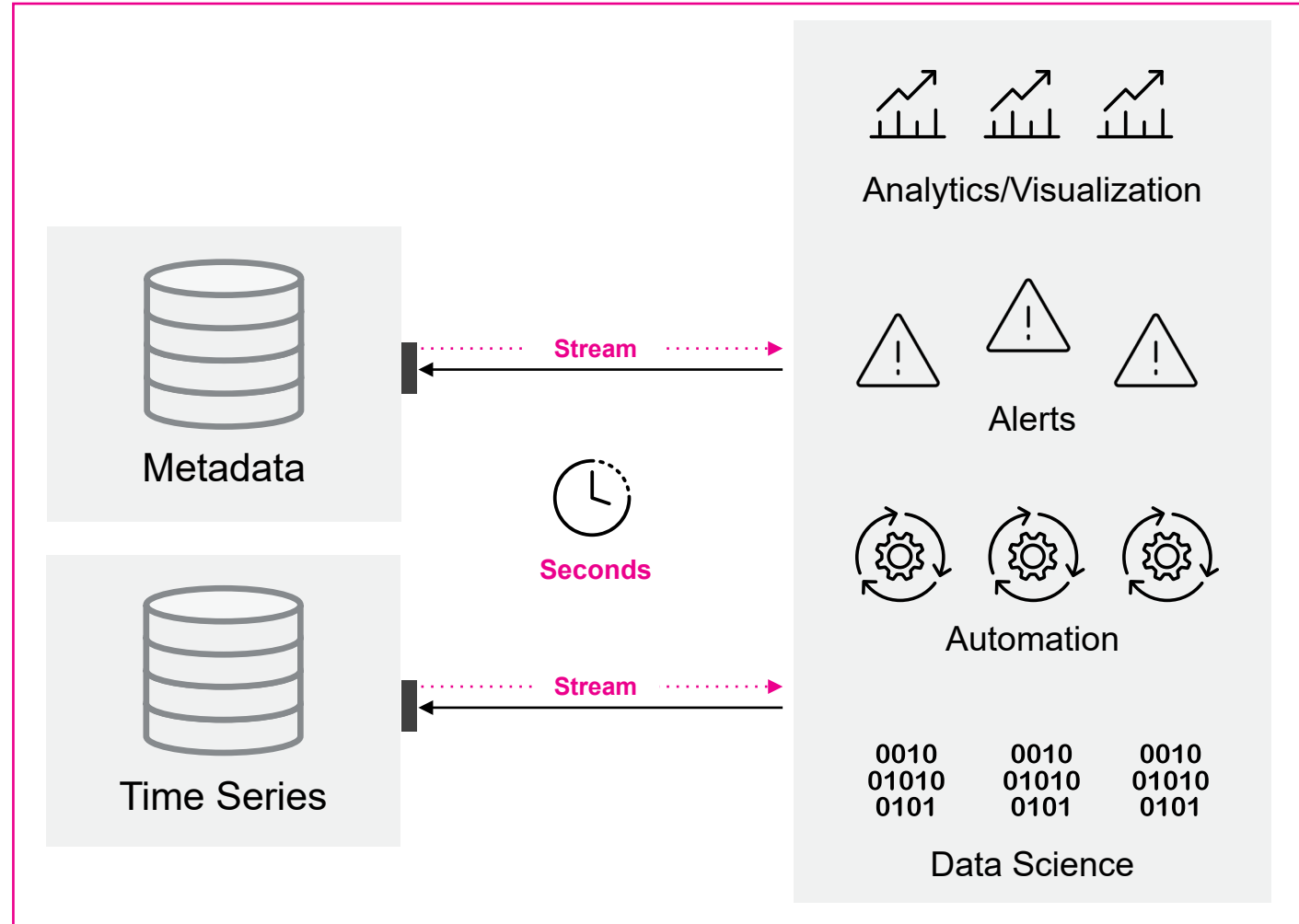
- Siloed systems creates fragmented data
- Batch TSDBs are not scalable
- Patchwork of systems creates poor visibility

Streaming Metrics Architecture Provides Insights in Seconds

Metrics



- Two separate DBs for high scalability
- Streaming system for instant visibility
- Unified platform for a single source of truth



Splunk Investigation & Troubleshooting

- Real-time search, analysis and visualization
- Collect and index any machine data
- Mission-critical performance, scale and reliability
- Thousands of third-party integrations



Splunk IT Service Intelligence (ITSI)

End to End Visibility

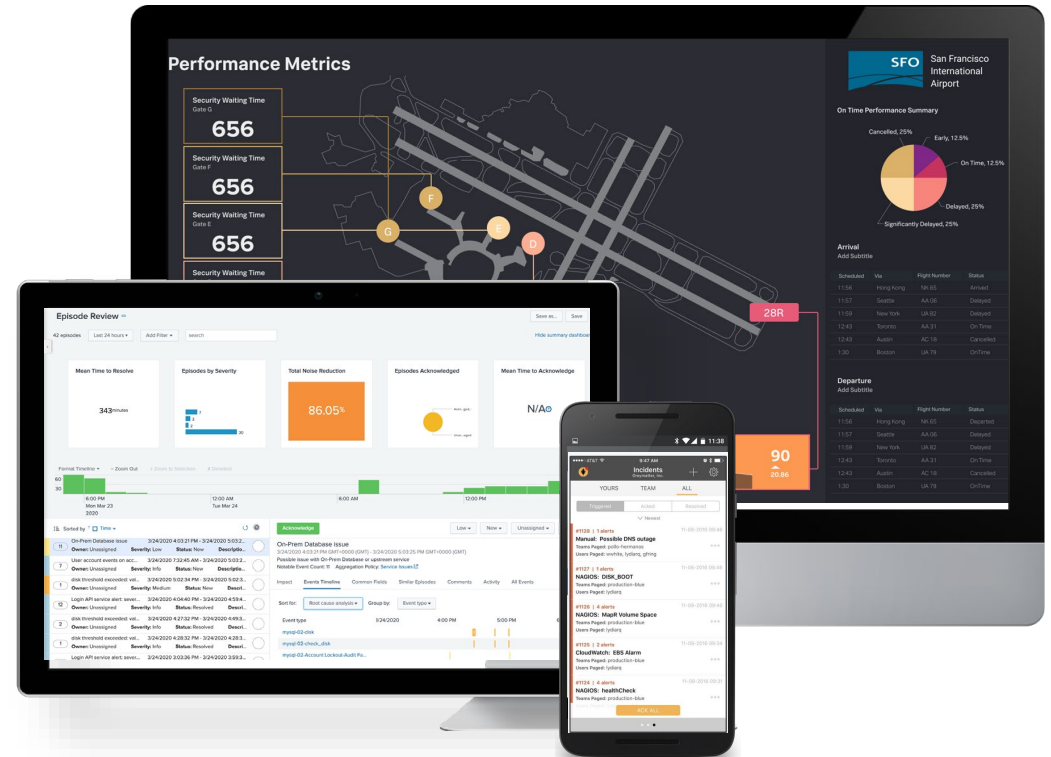
Protect business performance with dashboards to monitor service health, troubleshoot alerts and perform root cause analysis.

Streamlined IT Management

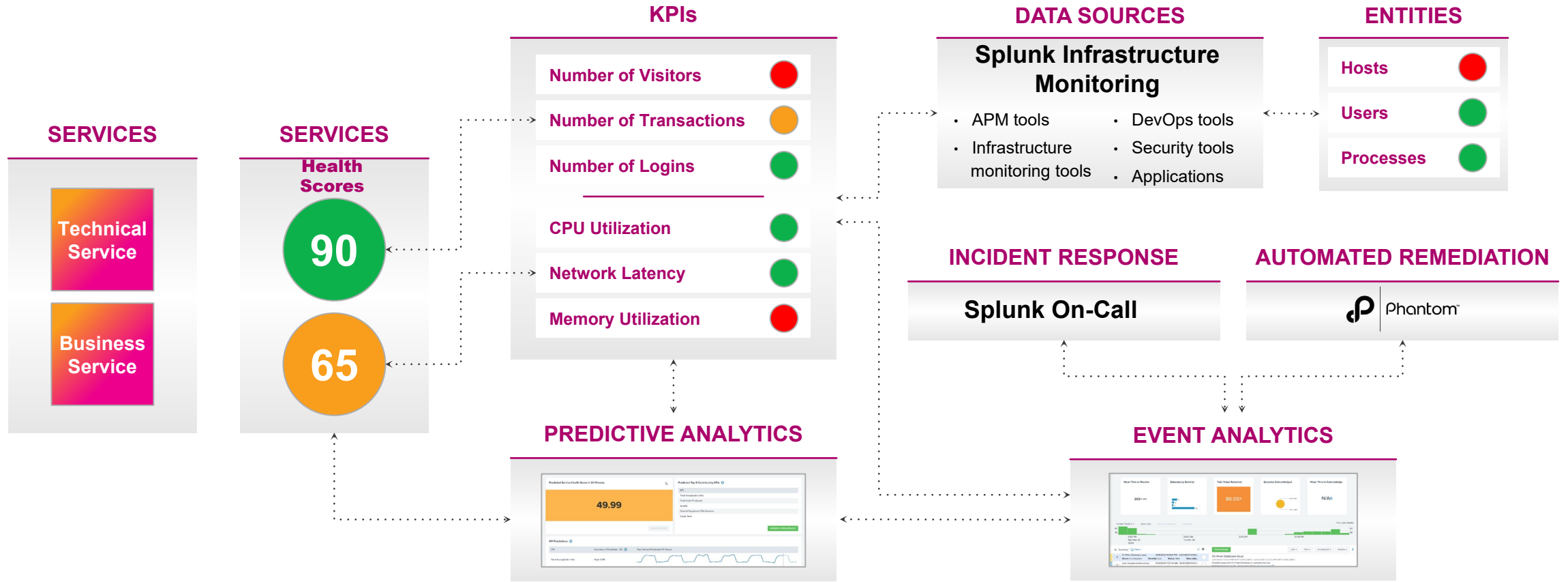
Reduce alert fatigue and MTTR with real-time event correlation and integrations with ITSM tools.

Scale with the Business

Modernize & scale with technology built with machine learning and advanced analytics



Splunk ITSI Technical Overview

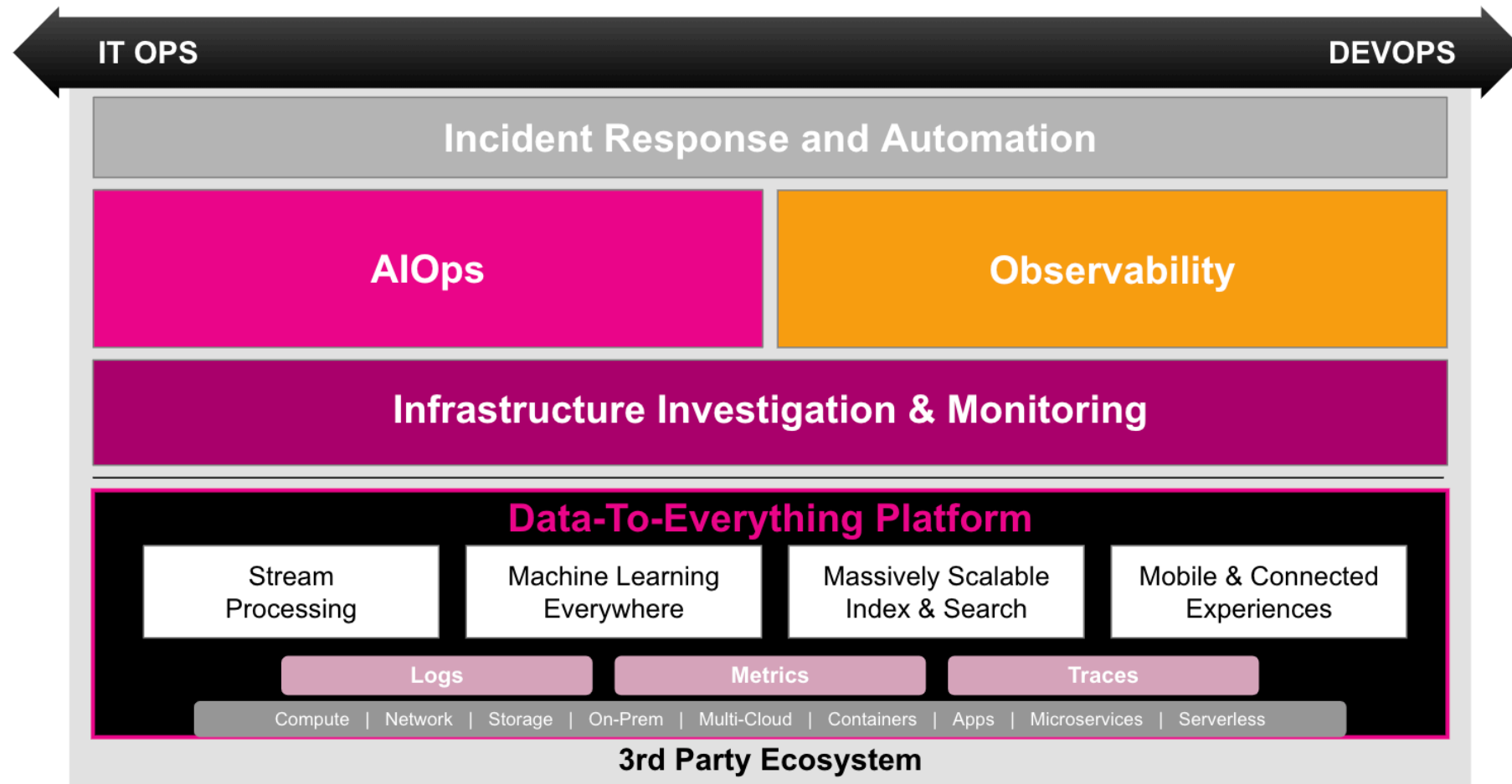




LET'S BRING THEM TOGETHER

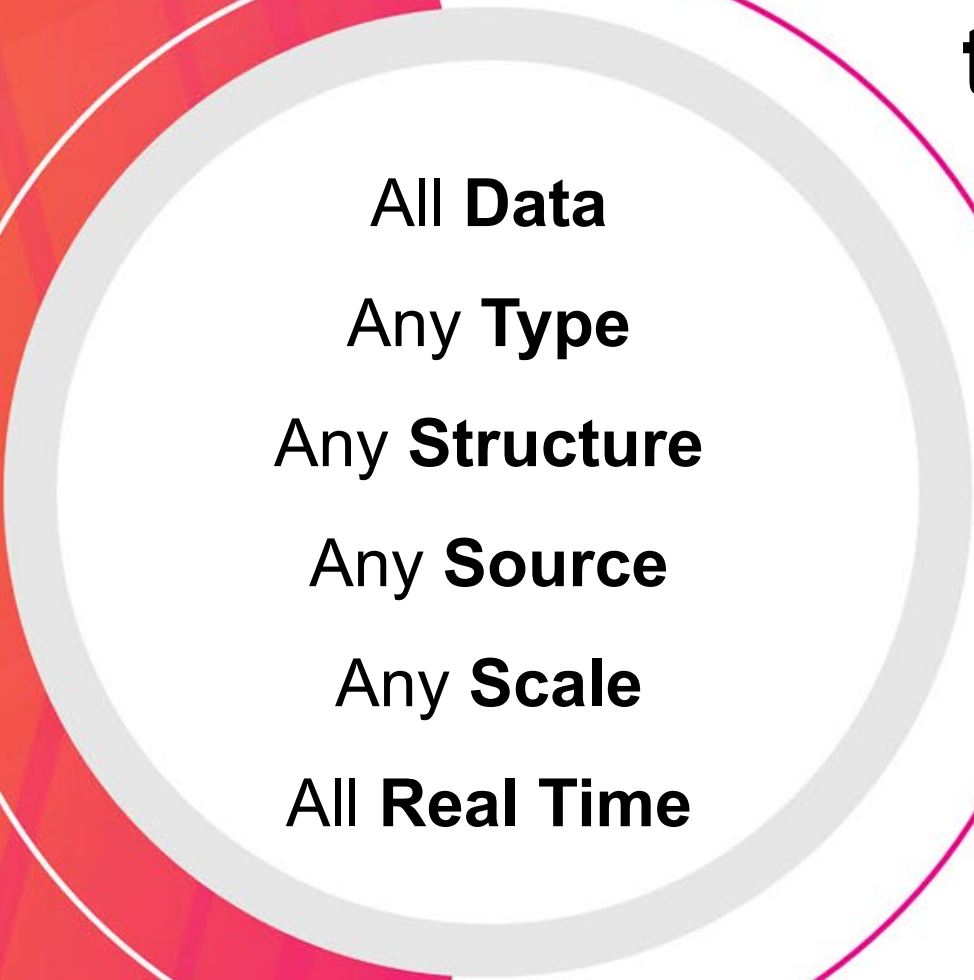
The Most Comprehensive Platform for Monitoring, Observability & AIOps

For Every App, Every Location, Every Team



Splunk Brings Data to Observability

“You can’t fix what you can’t see”



All Data
Any Type
Any Structure
Any Source
Any Scale
All Real Time

ACT

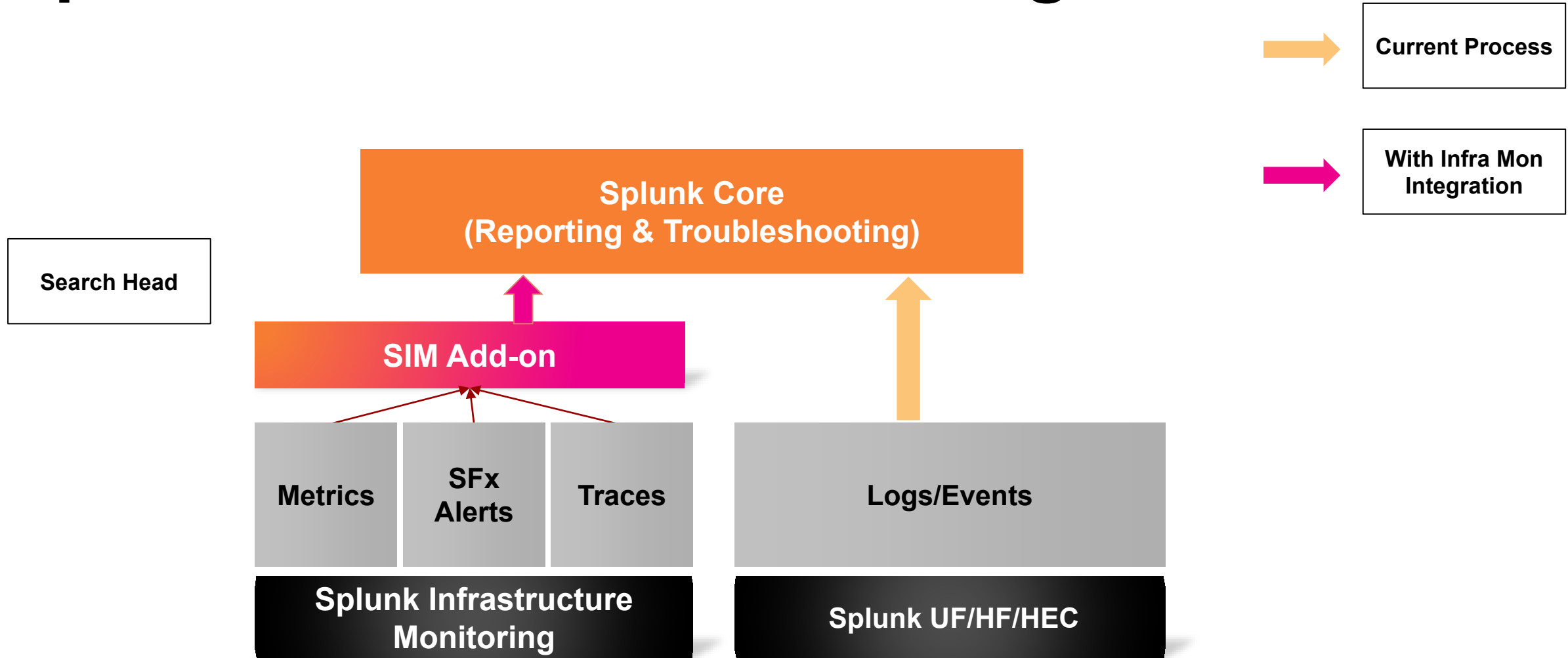
INVESTIGATE

MONITOR

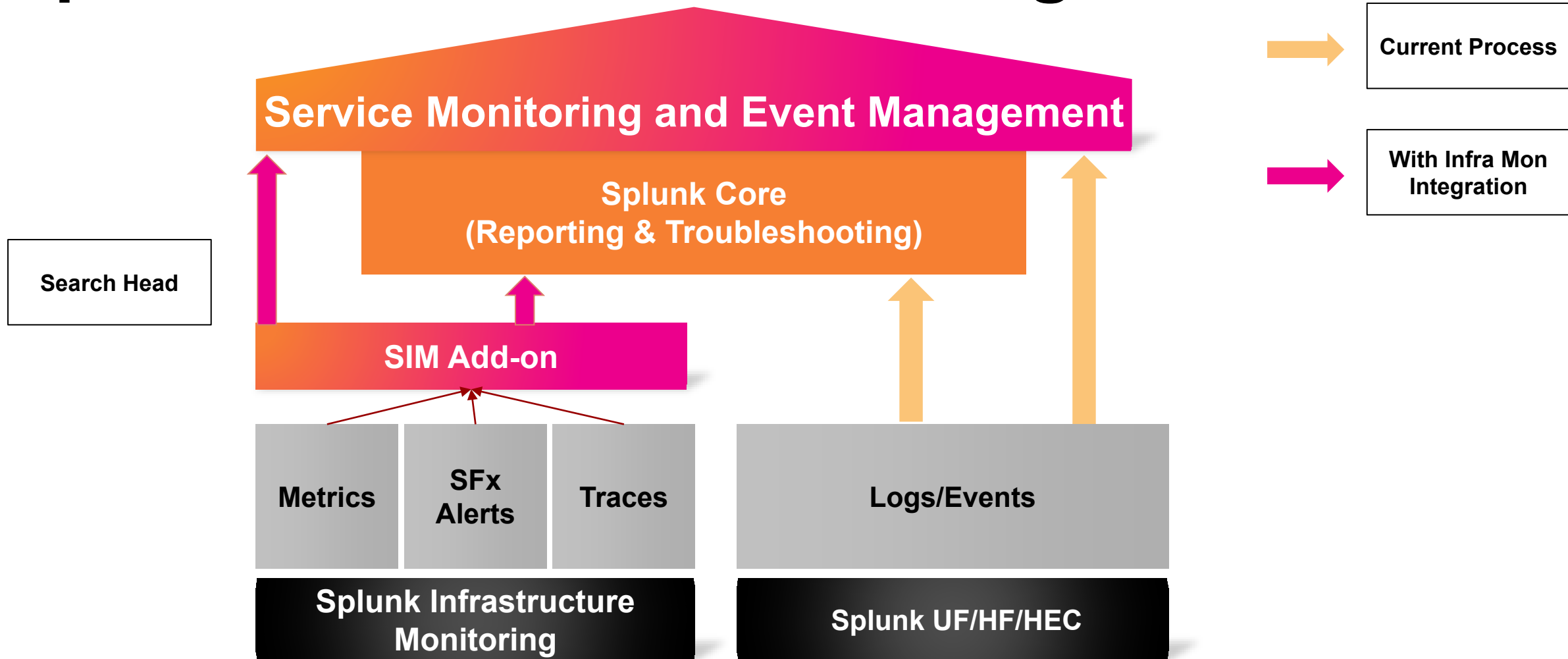
ANALYZE



Splunk Infrastructure Monitoring Add-On



Splunk Infrastructure Monitoring in ITSI



More information at Session ITO1536A – SignalFx + Splunk: Getting the Best of Both Worlds

Please join Session ITO1536A for more information on use case 2 and 3

ITO1536A - SignalFx + Splunk:
Getting the Best of Both Worlds



