

# Forward-Looking Statements



This presentation may contain forward-looking statements regarding future events, plans or the expected financial performance of our company, including our expectations regarding our products, technology, strategy, customers, markets, acquisitions and investments. These statements reflect management's current expectations, estimates and assumptions based on the information currently available to us. These forward-looking statements are not guarantees of future performance and involve significant risks, uncertainties and other factors that may cause our actual results, performance or achievements to be materially different from results, performance or achievements expressed or implied by the forward-looking statements contained in this presentation.

For additional information about factors that could cause actual results to differ materially from those described in the forward-looking statements made in this presentation, please refer to our periodic reports and other filings with the SEC, including the risk factors identified in our most recent quarterly reports on Form 10-Q and annual reports on Form 10-K, copies of which may be obtained by visiting the Splunk Investor Relations website at [www.investors.splunk.com](http://www.investors.splunk.com) or the SEC's website at [www.sec.gov](http://www.sec.gov). The forward-looking statements made in this presentation are made as of the time and date of this presentation. If reviewed after the initial presentation, even if made available by us, on our website or otherwise, it may not contain current or accurate information. We disclaim any obligation to update or revise any forward-looking statement based on new information, future events or otherwise, except as required by applicable law.

In addition, any information about our roadmap outlines our general product direction and is subject to change at any time without notice. It is for informational purposes only and shall not be incorporated into any contract or other commitment. We undertake no obligation either to develop the features or functionalities described, in beta or in preview (used interchangeably), or to include any such feature or functionality in a future release.

Splunk, Splunk> and Turn Data Into Doing are trademarks and registered trademarks of Splunk Inc. in the United States and other countries. All other brand names, product names or trademarks belong to their respective owners. © 2022 Splunk Inc. All rights reserved.

# Fast Pass to Value with Splunk for IT Operations Use Cases

OBS1373C

**Tapan Shah**

Principal Product Manager,  
O11y for IT | Splunk

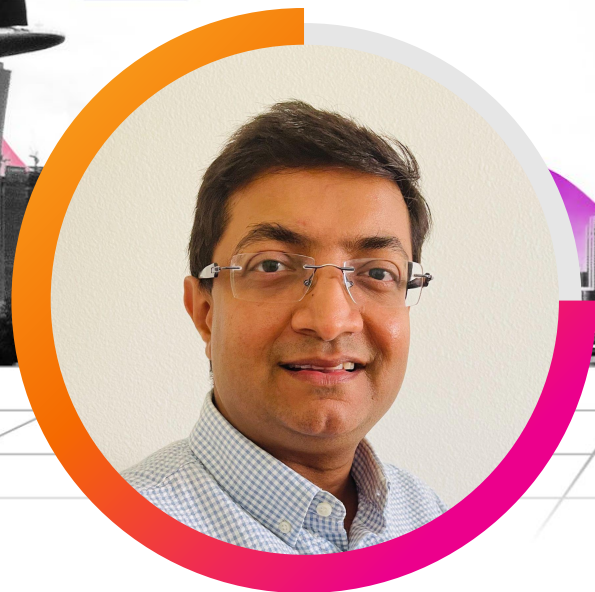
**Thomas Booth**

Director of Observability Strategy,  
Public Sector | Splunk



splunk> .conf22





**Tapan Shah**

Principal Product Manager | Splunk ITSI



**Thomas Booth**

Director of Observability Strategy | Public Sector

# Agenda

## 1) A Quick Recap

IT Ops Background and Products History

## 2) IT Essentials Overview

Strategy and Limitations

## 3) Uplift your time to value

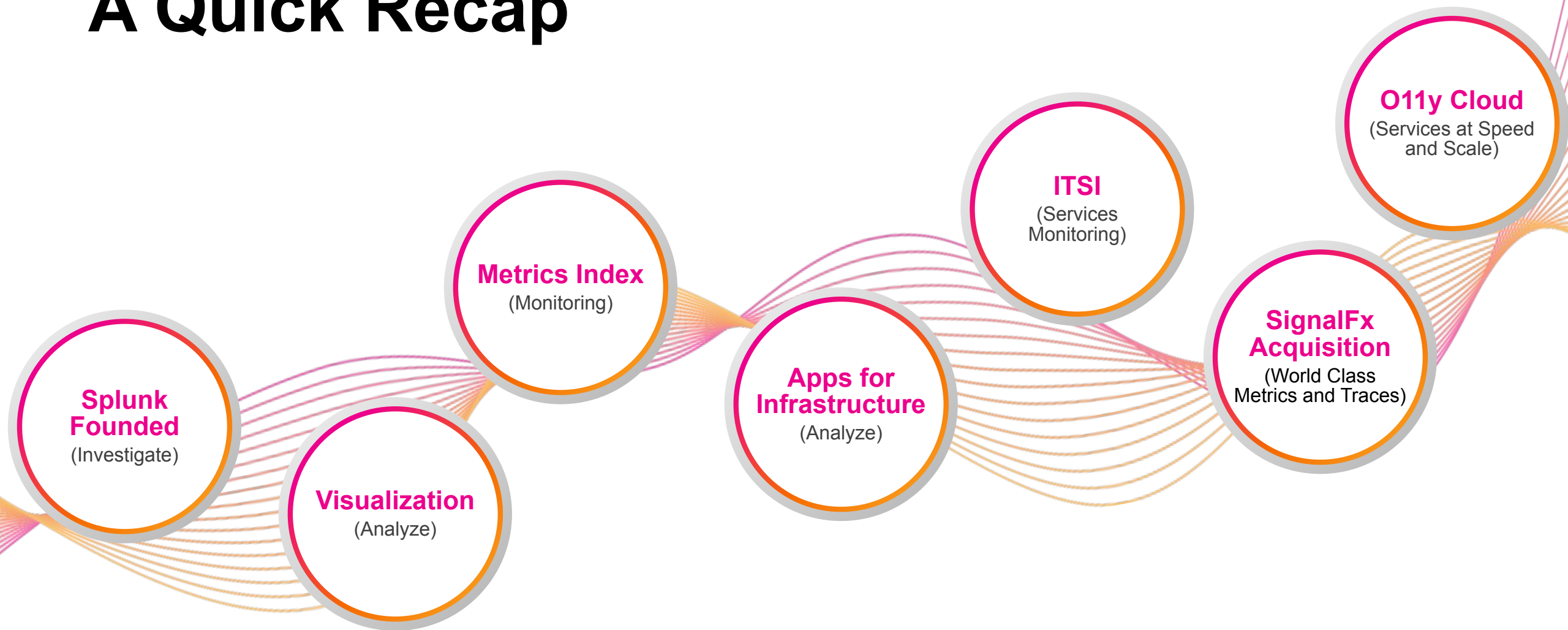
Enhanced experience fueled by out-of-the-box content packs

## 4) IT Essentials Work Demo

See real-world use cases in practice

## 5) Q&A

# A Quick Recap



# Common Challenges for Splunk's Newest Users

## Onboarding



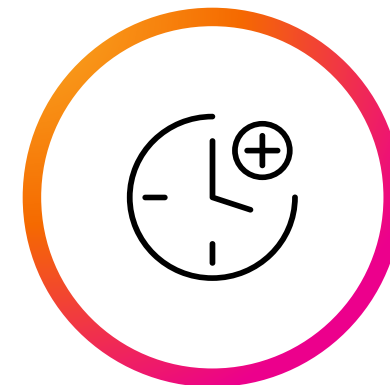
Search & Reporting App doesn't tell me where to begin, no in-product guidance, primarily external resources

## Growth



Difficulty onboarding new use cases, and no measure of progress for customer's IT journey

## Time-to-Value

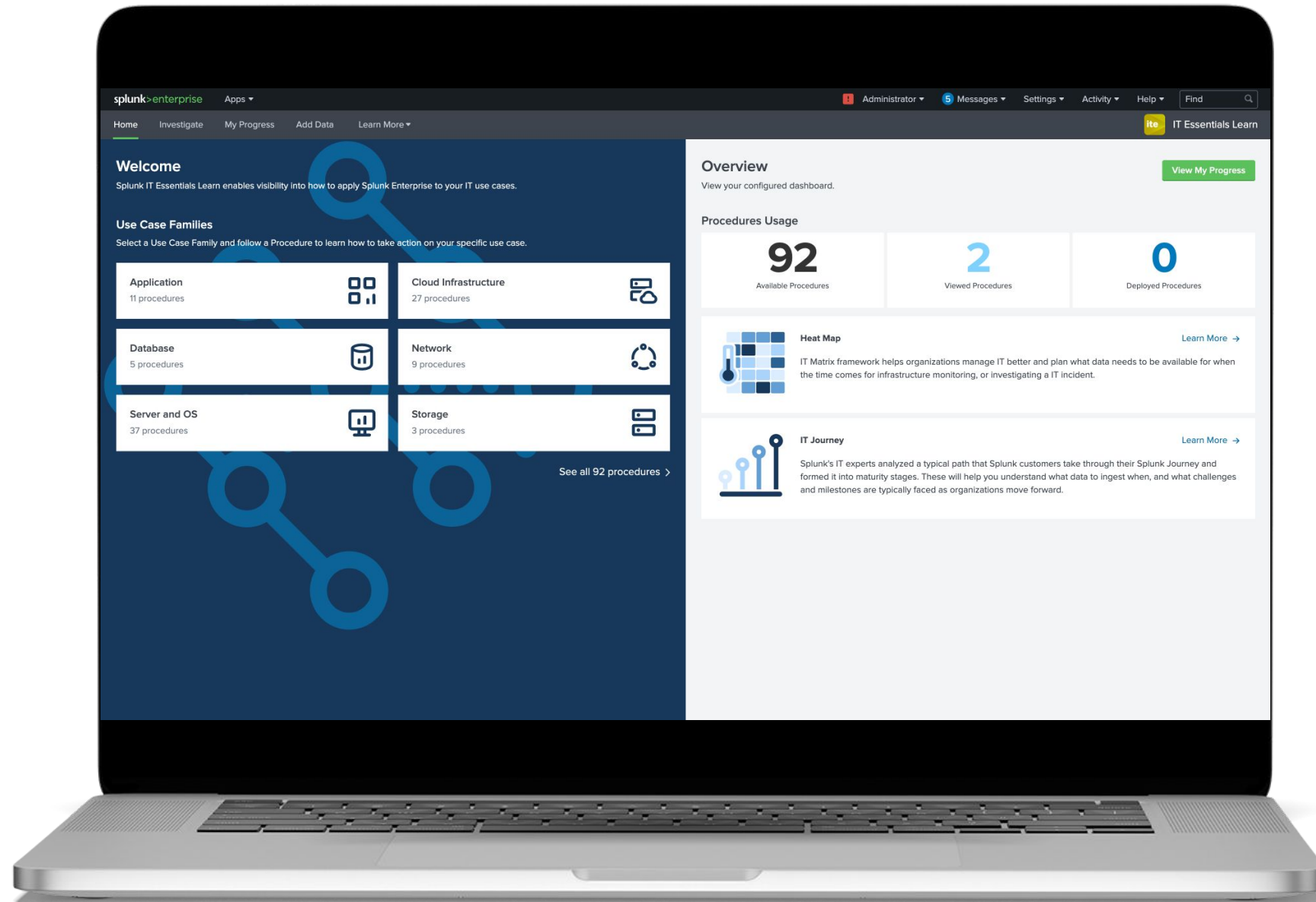


Build your own visualizations or learn new UI/UX with disparate GDI configurations

# IT Essentials

Get started quickly and easily with Splunk for ITOps

- **Curated content (pre-built SPLs; step-by-step guidance), grouped by use case family, for easier onboarding to achieve desired ITOps outcomes**
- Holistic view of all active entities (infra, services, apps) in the IT environment
- Automatically correlate logs and metrics for quick entity context and fast troubleshooting for improved MTTR



Note: IT Essentials Learn - Getting started with Splunk for IT was never this easier

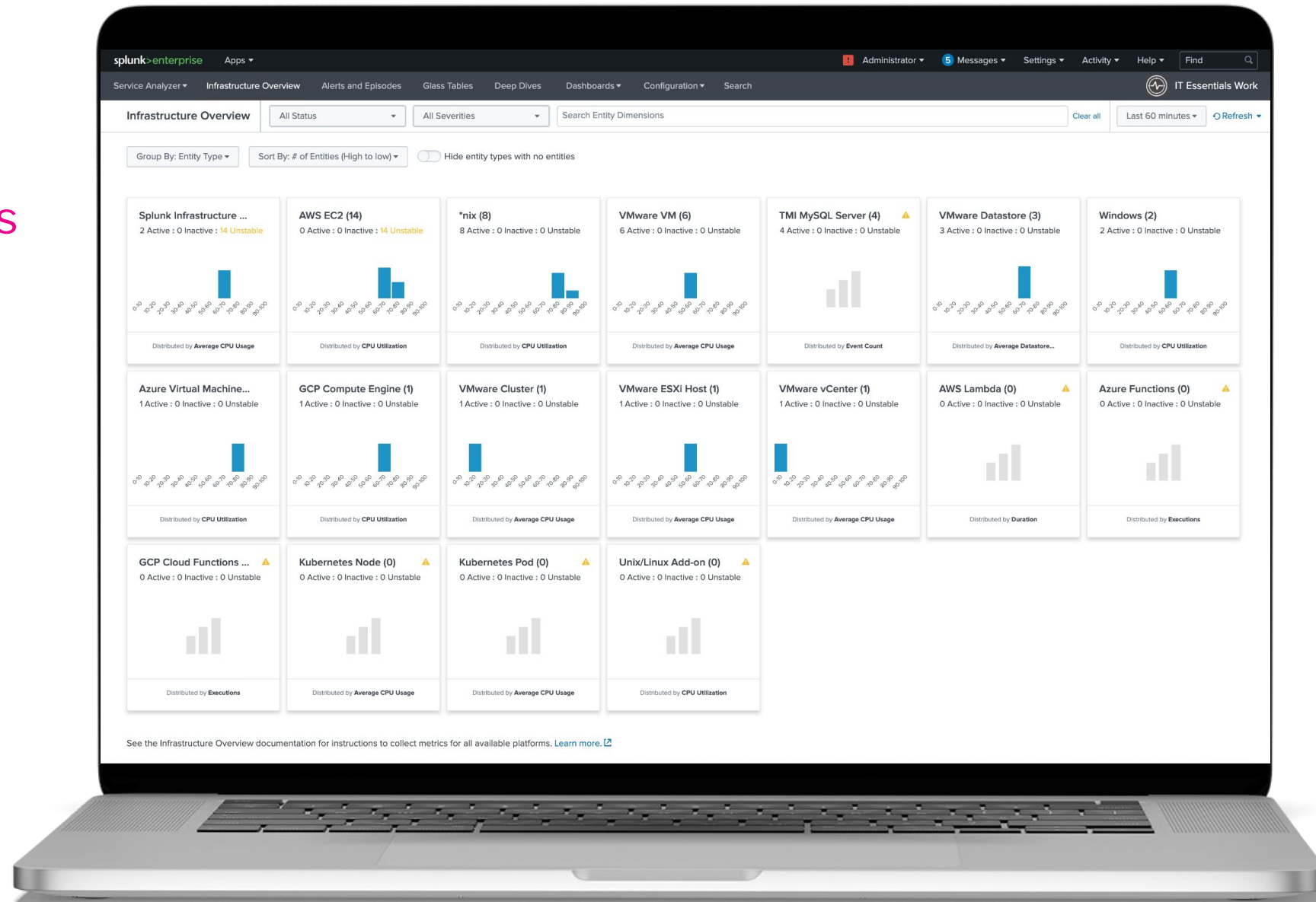
splunk> .conf22



# IT Essentials

Get started quickly and easily with Splunk for ITOps

- Curated content (pre-built SPLs; step-by-step guidance), grouped by use case, for easier onboarding to achieve desired ITOps outcomes
- Holistic view of all active entities (infra, services, apps) in the IT environment**
- Automatically correlate logs and metrics for quick entity context and fast troubleshooting for improved MTTR**



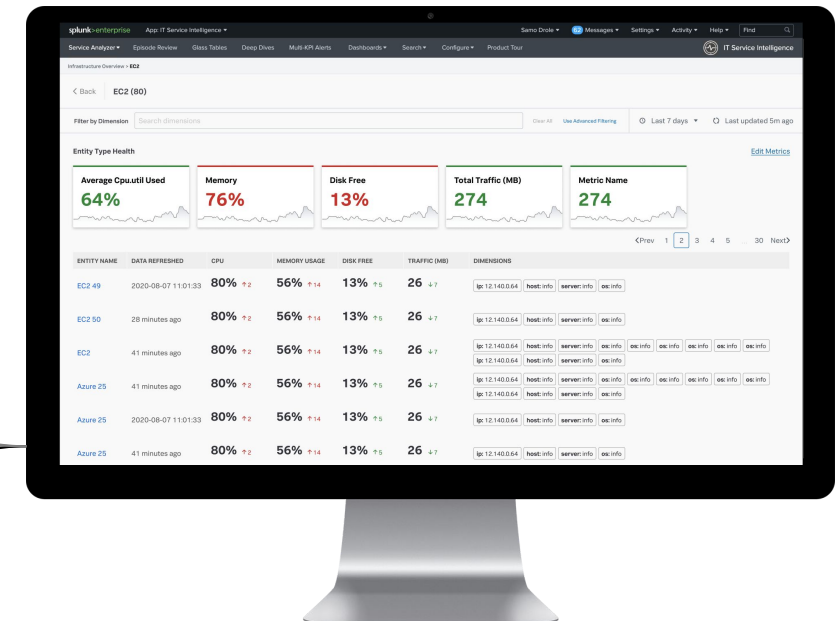
Note: IT Essentials Work - Speed up IT troubleshooting with log-based analysis



# IT Essentials' improved experience for existing Splunk customers: **>6 to 1 UI/UX**



SAI	App for Windows
App for VMWare	App for *nix
App for AWS	App for Microsoft Exchange

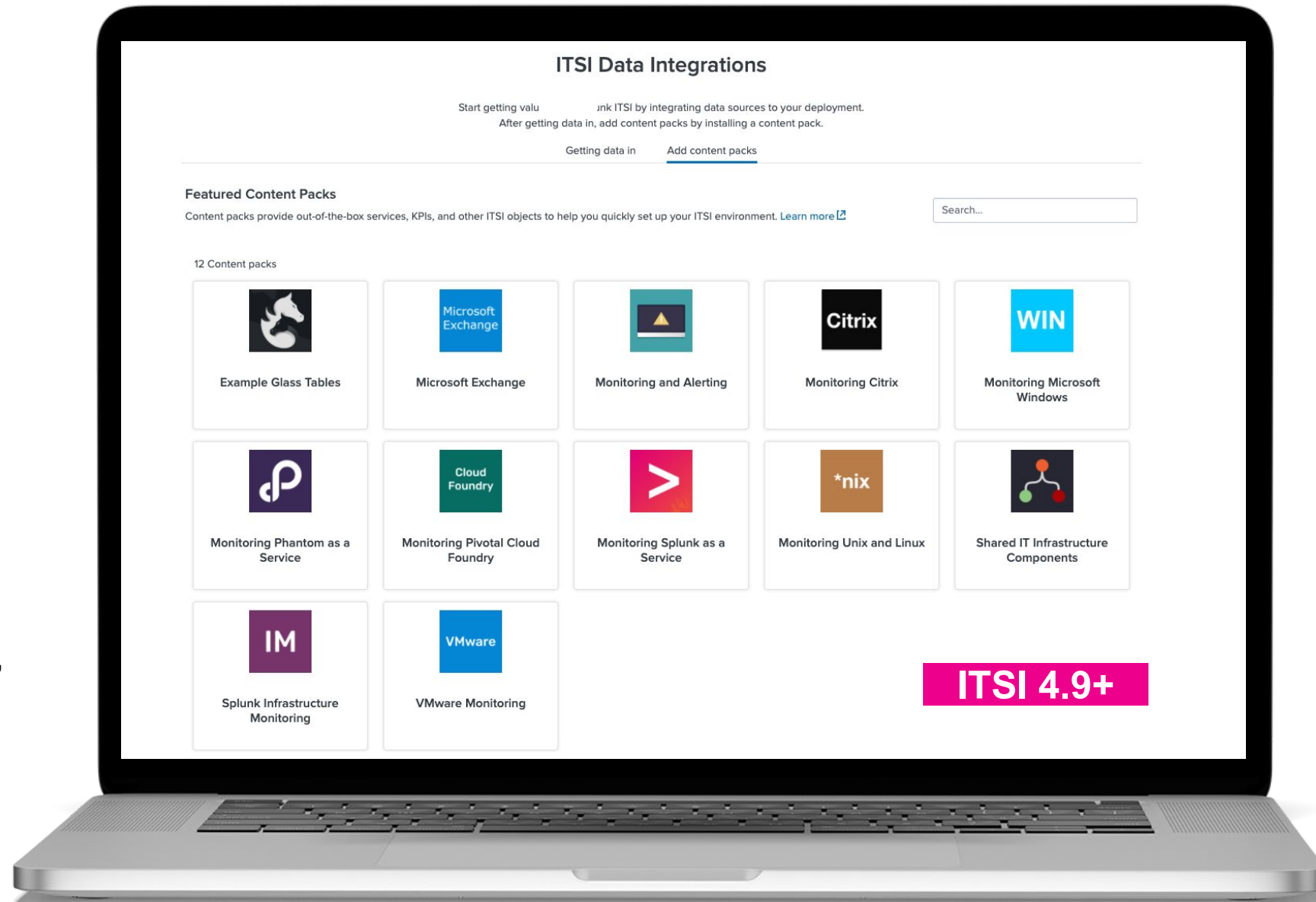


## IT Essentials Work

- \*nix
- Windows
- VMware
- NetApp
- Exchange
- AWS
- Alerting
- Splunk Infra Mon Entities

# Splunk App for Content Packs

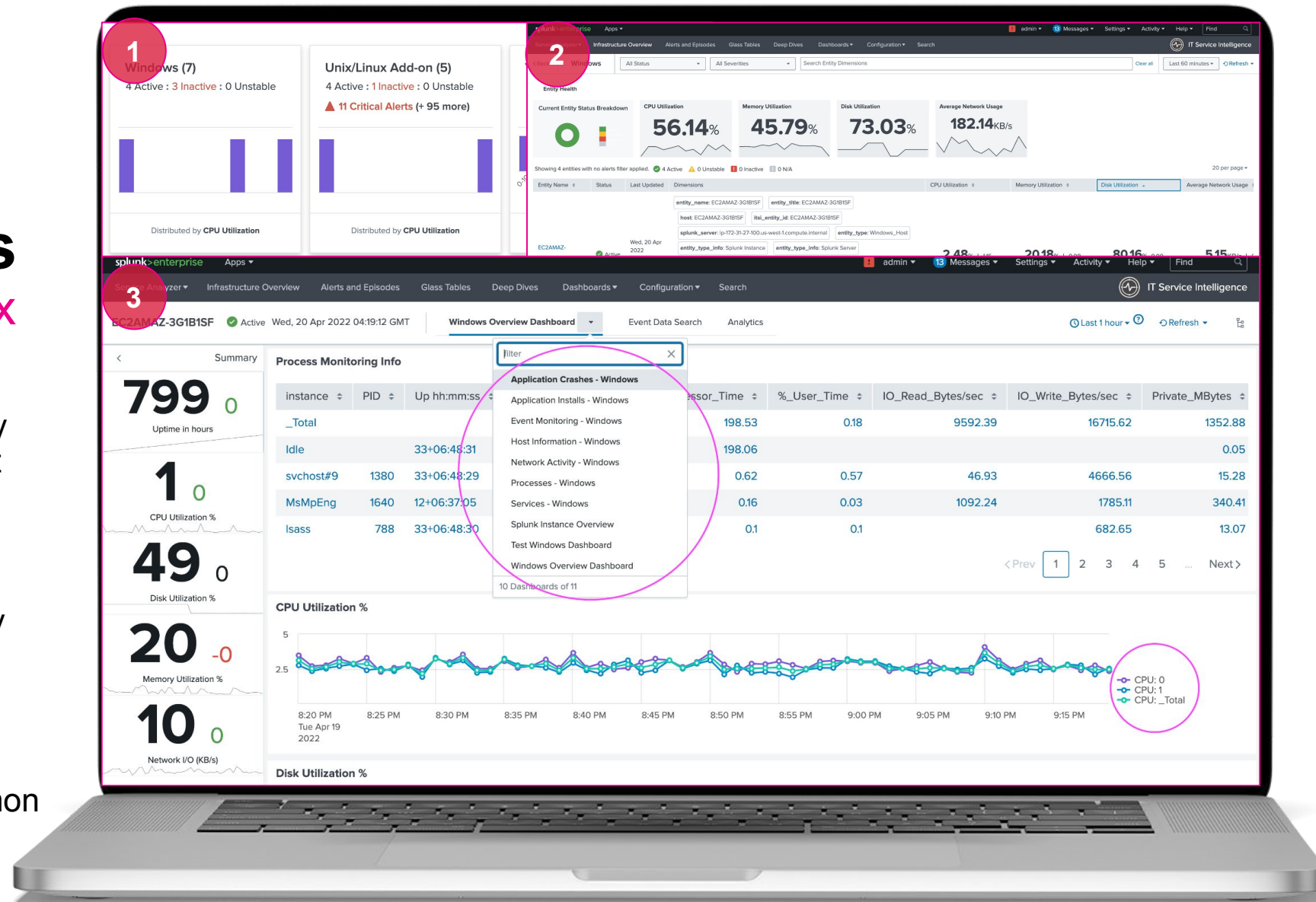
- **Curated library of out-of-the-box content** used to quickly set up ITSI/ITE Work environment
- **Preconfigured** Entity types, vital metrics, dashboards, KPI base searches, service templates, saved glass tables, and other objects for use within ITSI and ITE Work
- Update all content packs with **just one app**, ensures the latest version is being used



**Infrastructure content:** Unix/Linux, Windows, VMWare, AWS, Citrix  
**App Integrations:** Splunk O11y Cloud, SAP, Microsoft 365, Service Now, New Relic, AppDynamics, Dynatrace

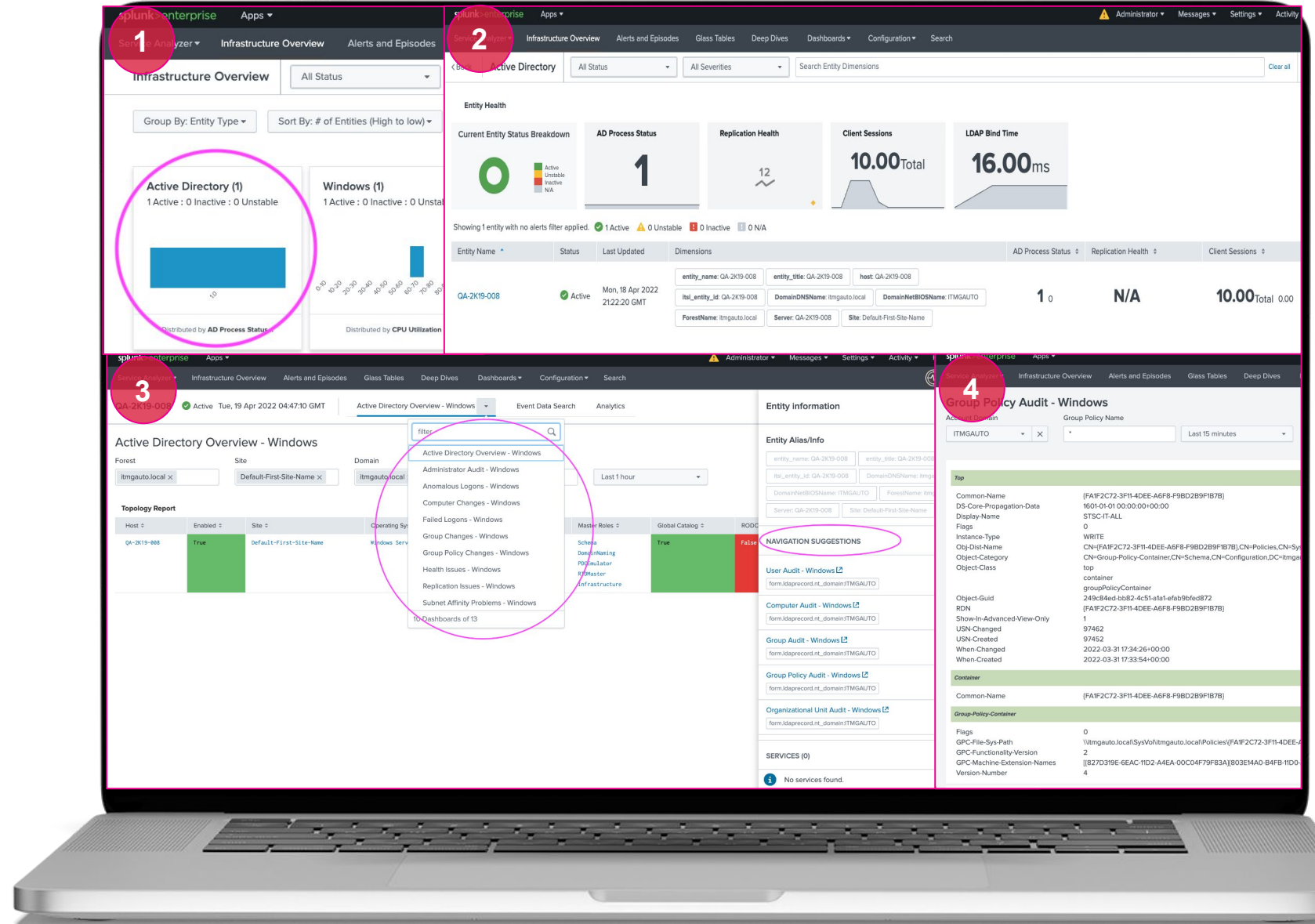
# Improvements and Updated Workflows for Windows and Unix/Linux

- OOTB dashboards improve usability and faster-time-to-value for OS host monitoring use cases
- Improved usability: Visualize CPU utilization by core; Disk utilization by partitions in overview dashboards
- Drilldown dashboards provide workflows for troubleshooting common OS infrastructure problems



# Brand New Entity Type for Active Directory monitoring

- Newly introduced Windows AD entity type for logical organization of hosts
- Overview dashboard for at-a-glance visibility
- Drilldown dashboards provide logical troubleshooting workflow

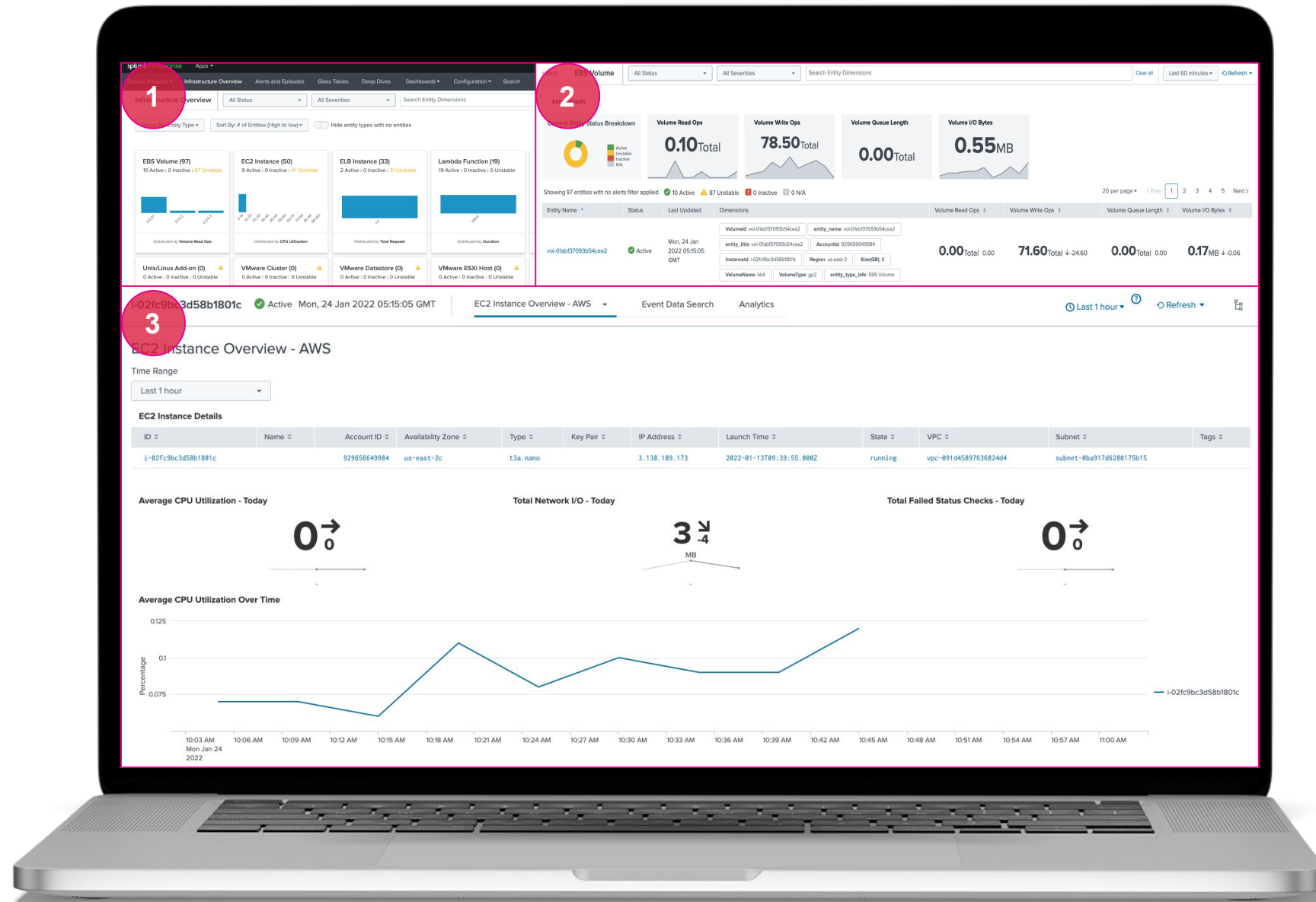




# Entity Types for common AWS services

EC2, ELB, EBS, Lambda

- Overview of each AWS service in “Entity Overview” dashboard
- Drilldown into entity inventory and pick an entity and look at the overview dashboard
- Keep entity context as you investigate



# IT Essentials, **Your First Step to Observability**

## Onboarding



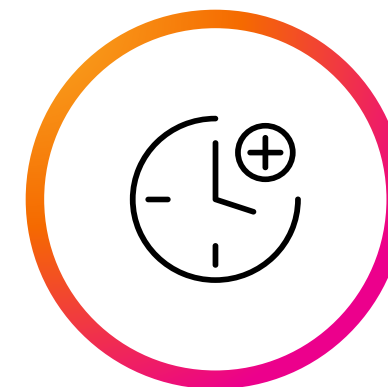
Leverage existing TAs and built-in features to provide immediate value and prescriptive direction

## Learning



Growing library of procedures help you learn how to accomplish a variety of IT tasks

## Time-to-Value



With Splunk App for Content Packs, content pushed every quarter for common technologies and key business services

# Thank You

