

Forward-Looking Statements



This presentation may contain forward-looking statements regarding future events, plans or the expected financial performance of our company, including our expectations regarding our products, technology, strategy, customers, markets, acquisitions and investments. These statements reflect management's current expectations, estimates and assumptions based on the information currently available to us. These forward-looking statements are not guarantees of future performance and involve significant risks, uncertainties and other factors that may cause our actual results, performance or achievements to be materially different from results, performance or achievements expressed or implied by the forward-looking statements contained in this presentation.

For additional information about factors that could cause actual results to differ materially from those described in the forward-looking statements made in this presentation, please refer to our periodic reports and other filings with the SEC, including the risk factors identified in our most recent quarterly reports on Form 10-Q and annual reports on Form 10-K, copies of which may be obtained by visiting the Splunk Investor Relations website at www.investors.splunk.com or the SEC's website at www.sec.gov. The forward-looking statements made in this presentation are made as of the time and date of this presentation. If reviewed after the initial presentation, even if made available by us, on our website or otherwise, it may not contain current or accurate information. We disclaim any obligation to update or revise any forward-looking statement based on new information, future events or otherwise, except as required by applicable law.

In addition, any information about our roadmap outlines our general product direction and is subject to change at any time without notice. It is for informational purposes only and shall not be incorporated into any contract or other commitment. We undertake no obligation either to develop the features or functionalities described, in beta or in preview (used interchangeably), or to include any such feature or functionality in a future release.

Splunk, Splunk> and Turn Data Into Doing are trademarks and registered trademarks of Splunk Inc. in the United States and other countries. All other brand names, product names or trademarks belong to their respective owners. © 2022 Splunk Inc. All rights reserved.

Just the Data You Want, Nothing More, Nothing Less

Edge Processing at Splunk
PLA1597C

Jodee Varney

Principal Product Manager | Splunk



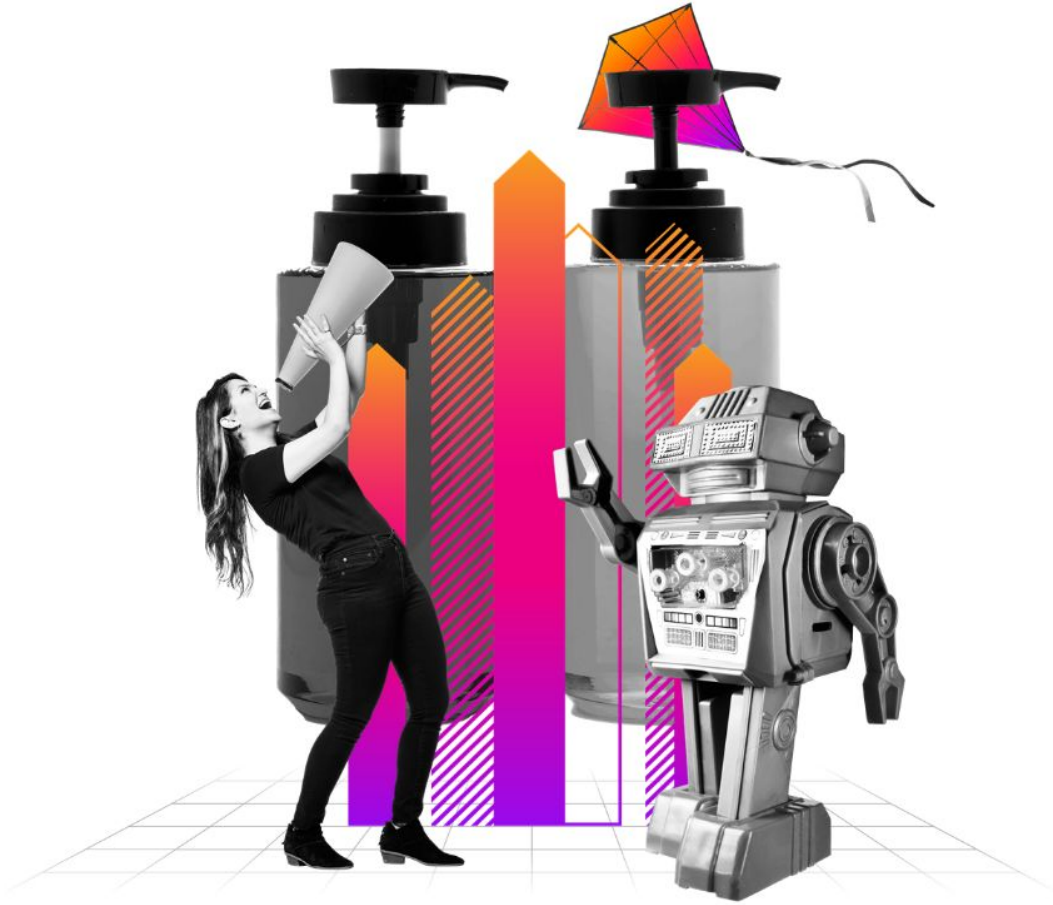
splunk >

.conf22



Jodee Varney

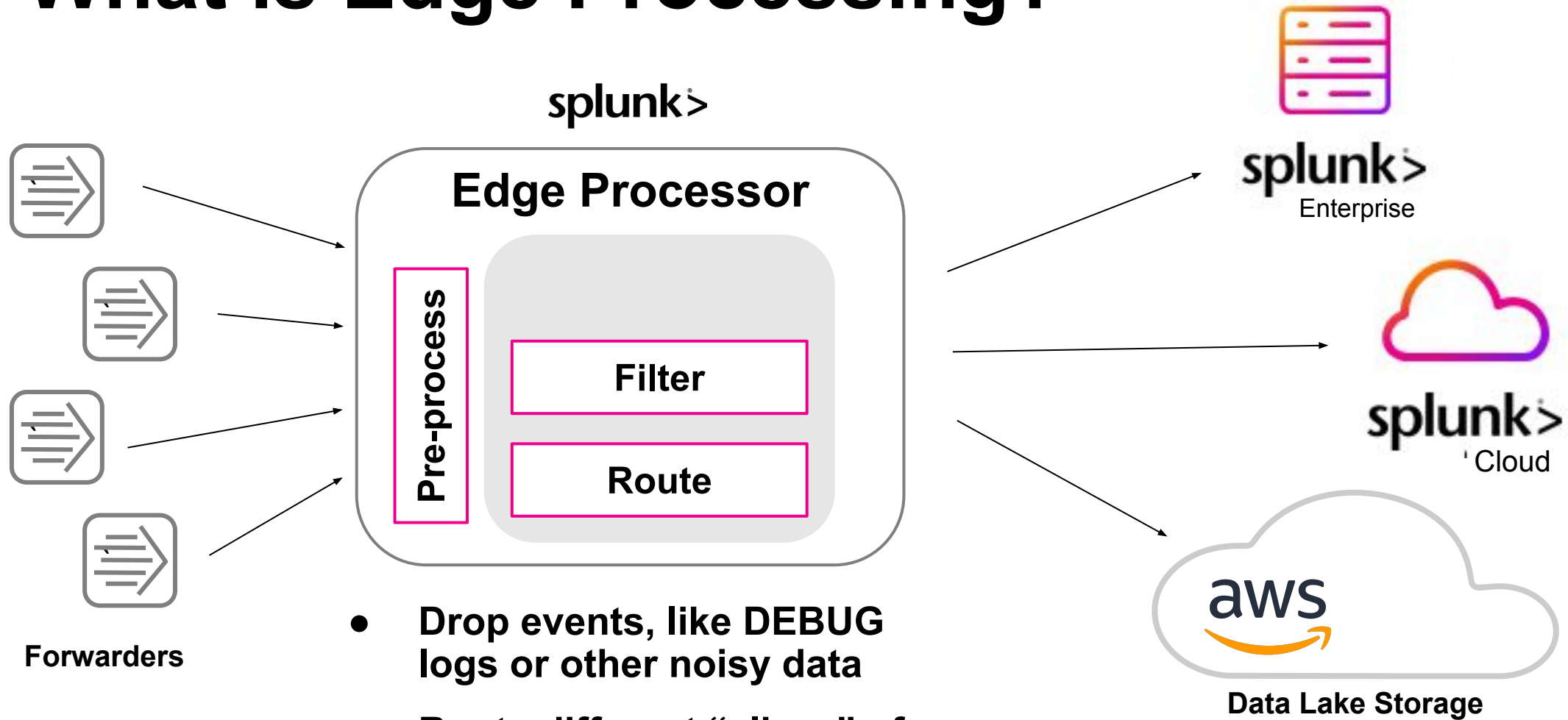
Principal Product Manager | Splunk



Agenda

- What is Edge Processing? *And how Splunk is not new to the game*
- Why now? *And what's our secret ingredient*
- What else is in store? *And how you can get involved*

What is Edge Processing?



- Drop events, like DEBUG logs or other noisy data
- Route different “slices” of data to desired destinations

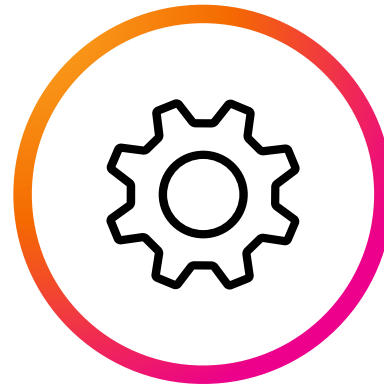
Edge Processing at Splunk

Heavyweight Forwarders



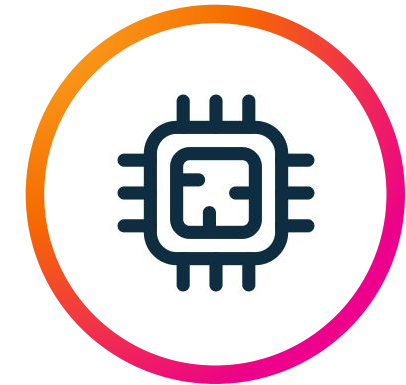
Powerful and performant edge processing

Ingest Actions



New UI to quickly and easily author and deploy ingest or edge transformations and routing

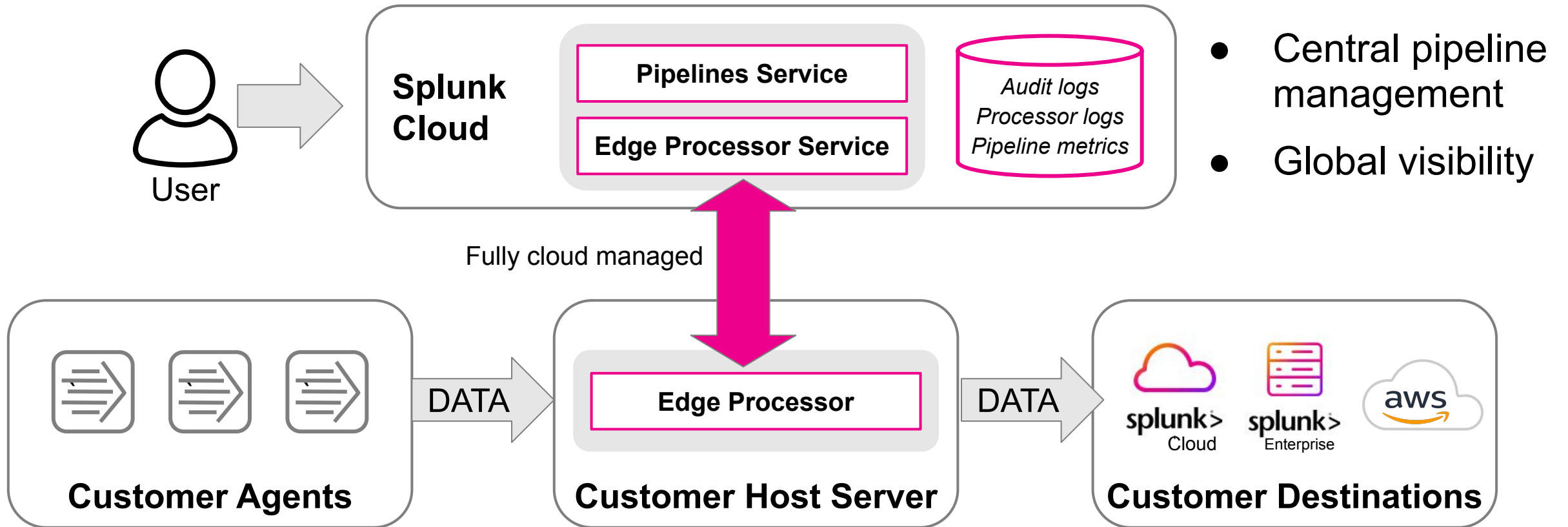
Edge Processor



Edge processing, with UI to quickly and easily **author, deploy and manage** edge transformations and routing

What's Different About Edge Processor?

It's easier from the cloud



- Central pipeline management
- Global visibility

Capabilities

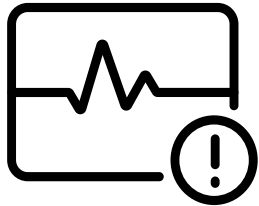
At launch

- **Single command line deployment** on hosts of your choice
- Easy to author data processing **pipelines** using SPL2 editor experience, and **data preview**
- **Apply pipelines globally** or across nodes of choice
- **Visibility** of inbound and outbound streams, with metrics
- Managed **from the cloud**, with regular incremental feature updates

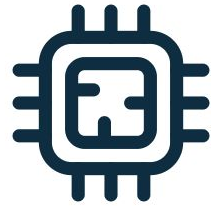
- **Supported processing***: Filtering & routing
- **Supported data sources***: UF/HWF
- **Supported destinations***: Splunk[®] Cloud Platform, Splunk[®] Enterprise, Amazon S3

** More processing capabilities, sources, and destinations to come in future releases*

Control and Visibility of Your Data



Gain visibility of the health of your data collection: see inbound data anomalies - spikes and troughs, by sourcetype



Gain new controls over how much (and what) data is sent to storage and data services

- Filter unnecessary data
- Route copies to data lake



Completely integrated with Splunk

Want to Stay in Touch?

To deeply engage with the dev team in Private Preview

- See me, or email me at jvarney@splunk.com
- Stay tuned for Public Preview and GA in a few months



Thank You

